

VU Research Portal

Efficacy of Self-guided Internet-Based Cognitive Behavioral Therapy in the Treatment of Depressive Symptoms: A Meta-analysis of Individual Participant Data

Karyotaki, E.; Riper, H.; Twisk, J.; Hoogendoorn, A.; Kleiboer, A.; Mira, A.; MacKinnon, A.; Meyer, B.; Botella, C.; Littlewood, E.; Andersson, G.; Christensen, H.; Klein, J.P.; Schroder, J.; Bretón-López, J.; Scheider, J.; Griffiths, K.; Farrer, L.; Huibers, M.J.H.; Phillips, R.

published in

JAMA Psychiatry
2017

DOI (link to publisher)

[10.1001/jamapsychiatry.2017.0044](https://doi.org/10.1001/jamapsychiatry.2017.0044)

document version

Publisher's PDF, also known as Version of record

[Link to publication in VU Research Portal](#)

citation for published version (APA)

Karyotaki, E., Riper, H., Twisk, J., Hoogendoorn, A., Kleiboer, A., Mira, A., MacKinnon, A., Meyer, B., Botella, C., Littlewood, E., Andersson, G., Christensen, H., Klein, J. P., Schroder, J., Bretón-López, J., Scheider, J., Griffiths, K., Farrer, L., Huibers, M. J. H., ... Cuijpers, P. (2017). Efficacy of Self-guided Internet-Based Cognitive Behavioral Therapy in the Treatment of Depressive Symptoms: A Meta-analysis of Individual Participant Data. *JAMA Psychiatry*, 74(4), 351-359. <https://doi.org/10.1001/jamapsychiatry.2017.0044>

General rights

Copyright and moral rights for the publications made accessible in the public portal are retained by the authors and/or other copyright owners and it is a condition of accessing publications that users recognise and abide by the legal requirements associated with these rights.

- Users may download and print one copy of any publication from the public portal for the purpose of private study or research.
- You may not further distribute the material or use it for any profit-making activity or commercial gain
- You may freely distribute the URL identifying the publication in the public portal ?

Take down policy

If you believe that this document breaches copyright please contact us providing details, and we will remove access to the work immediately and investigate your claim.

E-mail address:

vuresearchportal.ub@vu.nl

JAMA Psychiatry | Original Investigation | META-ANALYSIS

Efficacy of Self-guided Internet-Based Cognitive Behavioral Therapy in the Treatment of Depressive Symptoms

A Meta-analysis of Individual Participant Data

Eirini Karyotaki, MSc; Heleen Riper, PhD; Jos Twisk, PhD; Adriaan Hoogendoorn, PhD; Annet Kleiboer, PhD; Adriana Mira, PhD; Andrew Mackinnon, PhD; Björn Meyer, PhD; Cristina Botella, PhD; Elizabeth Littlewood, PhD; Gerhard Andersson, PhD; Helen Christensen, PhD; Jan P. Klein, PhD; Johanna Schröder, PhD; Juana Bretón-López, PhD; Justine Scheider, PhD; Kathy Griffiths, PhD; Louise Farrer, PhD; Marcus J. H. Huibers, PhD; Rachel Phillips, MSc; Simon Gilbody, PhD; Steffen Moritz, PhD; Thomas Berger, PhD; Victor Pop, PhD; Viola Spek, PhD; Pim Cuijpers, PhD

[+ Supplemental content](#)

IMPORTANCE Self-guided internet-based cognitive behavioral therapy (iCBT) has the potential to increase access and availability of evidence-based therapy and reduce the cost of depression treatment.

OBJECTIVES To estimate the effect of self-guided iCBT in treating adults with depressive symptoms compared with controls and evaluate the moderating effects of treatment outcome and response.

DATA SOURCES A total of 13 384 abstracts were retrieved through a systematic literature search in PubMed, Embase, PsycINFO, and Cochrane Library from database inception to January 1, 2016.

STUDY SELECTION Randomized clinical trials in which self-guided iCBT was compared with a control (usual care, waiting list, or attention control) in individuals with symptoms of depression.

DATA EXTRACTION AND SYNTHESIS Primary authors provided individual participant data from 3876 participants from 13 of 16 eligible studies. Missing data were handled using multiple imputations. Mixed-effects models with participants nested within studies were used to examine treatment outcomes and moderators.

MAIN OUTCOMES AND MEASURES Outcomes included the Beck Depression Inventory, Center for Epidemiological Studies–Depression Scale, and 9-item Patient Health Questionnaire scores. Scales were standardized across the pool of the included studies.

RESULTS Of the 3876 study participants, the mean (SD) age was 42.0 (11.7) years, 2531 (66.0%) of 3832 were female, 1368 (53.1%) of 2574 completed secondary education, and 2262 (71.9%) of 3146 were employed. Self-guided iCBT was significantly more effective than controls on depressive symptoms severity ($\beta = -0.21$; Hedges $g = 0.27$) and treatment response ($\beta = 0.53$; odds ratio, 1.95; 95% CI, 1.52-2.50; number needed to treat, 8). Adherence to treatment was associated with lower depressive symptoms ($\beta = -0.19$; $P = .001$) and greater response to treatment ($\beta = 0.90$; $P < .001$). None of the examined participant and study-level variables moderated treatment outcomes.

CONCLUSIONS AND RELEVANCE Self-guided iCBT is effective in treating depressive symptoms. The use of meta-analyses of individual participant data provides substantial evidence for clinical and policy decision making because self-guided iCBT can be considered as an evidence-based first-step approach in treating symptoms of depression. Several limitations of the iCBT should be addressed before it can be disseminated into routine care.

JAMA Psychiatry. doi:10.1001/jamapsychiatry.2017.0044
Published online February 22, 2017.

Author Affiliations: Author affiliations are listed at the end of this article.

Corresponding Author: Eirini Karyotaki, MSc, Department of Clinical Psychology and EMGO Institute for Health and Care Research, VU Amsterdam, Van der Boerhorststraat 1, 1081 BT Amsterdam, the Netherlands (e.karyotaki@vu.nl).

Many studies¹⁻⁴ have found that depressive symptoms can be effectively treated with psychotherapy, pharmacotherapy, or both. Nevertheless, many people with depressive symptoms do not seek help, and even well-resourced health care systems find it difficult to marshal enough qualified therapists to offer psychological interventions. Access barriers to psychotherapy include limited availability of trained clinicians, high cost of treatment, and fear of stigmatization.⁵⁻⁸ As a consequence, a significant number of individuals with depressive symptoms remain untreated.^{9,10}

Self-guided internet-based cognitive behavioral therapy (iCBT) without therapist support can allow physicians, such as general practitioners, to provide easy and affordable access to psychological treatments and reduce the cost of such treatments. A meta-analysis¹¹ found a small but significant effect size of self-guided iCBT compared with control conditions. However, recent large trials found a range of effects, varying from small to moderate effect sizes^{12,13} to no effect.^{14,15} These contradicting findings drew much attention and raised concerns about the benefits of these interventions.

Randomized clinical trials (RCTs) and study-level systematic reviews often lack adequate power and precision in their estimates. Statistically underpowered samples also preclude identification of clinically useful moderators or predictors of treatment outcome.¹⁶ Meta-analyses using individual participant data (IPD) estimate aggregate effect sizes using IPD from RCTs. The IPD maximize power to detect a true effect while allowing the exploration of study variability (eg, level of support, treatment adherence, setting) and participant characteristics as moderators of treatment outcome. The present study reports the results of an IPD meta-analysis of trials on self-guided iCBT for adult depressive symptoms compared with control conditions. The term *self-guided iCBT* is defined as CBT delivered via the internet, which may involve automated feedback but does not provide support related to the therapeutic content.

Methods

Eligibility Criteria

Studies were included if the participants were adults (aged >18 years) with elevated symptoms of depression based on any diagnosis or any self-report scale of depression. Only those RCTs in which self-guided iCBT was compared with a control condition (usual care, waiting list, or attention control) were included. No language or publication status exclusions were applied.

Study Identification and Selection Process

The analysis was completed in compliance with the Preferred Reporting Items for Systematic Review and Meta-analyses (PRISMA) IPD Statement.¹⁷ We used an existing database on psychological treatments for depression¹⁸ that is updated annually by a systematic literature search in the bibliographic databases of PubMed, Embase, PsycINFO, and Cochrane Library (from inception to January 1, 2016). In these

Key Points

Questions Is self-guided internet-based cognitive behavioral therapy effective in treating depressive symptoms and which variables moderate treatment outcome?

Findings In this meta-analysis of individual participant data from 3876 adults, internet-based cognitive behavioral therapy was more effective compared with controls. Adherence predicted better treatment outcomes within the experimental condition.

Meaning Self-guided internet-based cognitive behavioral therapy may be a viable alternative to current first-step treatment approaches for symptoms of depression, particularly in those individuals who are not willing to have any therapeutic contact.

searches, various index and free terms of psychotherapy and depression are used in different combinations (full search strings for PubMed are provided in the eMethods in the Supplement). Two researchers (P.C. and E.K.) independently examined titles and abstracts of 13 384 articles. The full text of studies that possibly met the inclusion criteria according to 1 of the 2 reviewers was retrieved. In case of disagreement regarding inclusion, consensus was sought through discussion. We also asked key researchers in the field whether they knew of unpublished trials.

Data Collection and Data Items

Authors of eligible articles were contacted for permission to use their data sets. Reminders were sent after 2 weeks and if necessary after 1 month. If no response was received, we excluded the trial. Authors were asked to provide data on sociodemographic, clinical, and intervention characteristics, including information regarding randomized group, baseline and follow-up total scores of depressive symptoms, treatment adherence information (total number of sessions completed divided by total number of treatment sessions), age, sex, educational level (primary, secondary, and tertiary education), employment status (employed or unemployed), relationship status (in a relationship or not), and comorbid anxiety symptoms at baseline (yes or no; based on a clinical interview or elevated anxiety symptoms ratings on self-report measures). Finally, we combined all individual data sets into a merged data set, using a generic standardized protocol for integrating IPD sets.¹ We also used study-level variables, which were available from the full reports (type of comparator condition, recruitment, level of support). The selection of moderator variables has been based on previous literature related to moderators of face-to-face CBT or iCBT.^{16,19}

Risk of Bias Assessment in Individual Studies

We examined the risk of bias in the included studies using the criteria of the Cochrane Collaboration risk of bias assessment tool.²⁰ Two independent reviewers (E.K., P.C.) evaluated the included studies to determine whether there was a risk for bias related to selection, performance, detection, attrition, and outcome reporting. In case of unclear risk of bias for 1 or more key domains, we contacted the first authors of the included studies for clarifications.

Traditional Meta-analysis

We conducted a traditional meta-analysis to examine differences among the 13 studies that provided the IPD and the 3 studies that did not. We used data reported in the articles to calculate the effect sizes (Hedges g).²¹ The reader is referred to the eMethods in the Supplement for details regarding the methods of the traditional meta-analysis.

IPD Meta-analysis

Studies included in this IPD meta-analysis used measures such as the Center of Epidemiologic Studies–Depression Scale,²² the Beck Depression Inventory I²³ or II,²⁴ (hereafter referred to as Beck Depression Inventory) or the 9-item Patient Health Questionnaire²⁵ to monitor change in depressive symptoms severity. These depression measures were standardized by transformation into z scores across the pool of the studies before conducting the main analysis.

Missing outcome data at the posttreatment assessment were estimated using multiple imputation under the missing-at-random assumption (mi impute mvn in STATA software, version 13.1; StataCorp). This method generated 100 imputed data sets using data on baseline depressive symptoms scores, age, sex, and group. These new imputed data sets included the observed and the imputed standardized depressive symptoms scores for the missing values. They were analyzed separately using the selected model, and the results were averaged according to Rubin's rules.²⁶ We also conducted sensitivity analyses using only participants with complete data after treatment to examine whether there was a difference between those who dropped out of the RCTs and those who provided post-treatment data.

In a 1-stage IPD meta-analysis, we merged all IPD from all studies with participants nested within studies. One-stage IPD meta-analysis yields more precise and less biased estimates of effect, maximizes the power, and accounts for parameter correlation.^{27,28} We calculated the standardized β coefficient for the examined comparisons. This estimate indicates how many SDs the dependent variable (depressive symptoms severity or the log odds ratio [OR] of treatment response) changes per SD increase in the predictor variable. Thus, the higher the β is the greater the effect of the predictor variable on the dependent variable, although there is no association among the variables if the β is 0. All analyses were conducted with STATA statistical software, version 13.1. The primary analysis was 2-fold. First, we analyzed the effects of the interventions on depressive symptom severity at the end of treatment using a multilevel mixed-effects linear regression (using a random intercepts model with a random effect for each trial and fixed effects for the intervention and the symptoms severity, using STATA's mixed command). The posttreatment depression scores were used as the dependent variable and trial arm condition (treatment vs control) as the independent variable, while controlling for baseline depressive symptom severity.

Second, we analyzed the effects of the interventions on treatment response (defined as a 50% reduction in baseline depressive symptoms scores) at the posttreatment assessment using a multilevel mixed-effects logistic regression (using a random intercepts model with a random effect for each trial and

fixed effects for the intervention and the depressive symptoms severity, using STATA's melogit command). The response (yes or no) was the dependent variable, and condition was the independent variable.

Third, we ran a 2-stage IPD meta-analysis analyzing the IPD separately in each study and then combining the estimates to calculate the pooled effect sizes (Hedges g) for depressive symptoms severity. Two-stage IPD meta-analysis facilitates analysis standardization across the included studies and estimation of outcomes that are not available in the published reports, such as treatment response.²⁹ Similarly, we calculated the OR of treatment response and numbers needed to treat (NNTs), which allowed us to compare the results of the present meta-analysis with those reported in earlier meta-analyses. In addition, 2-stage IPD meta-analysis also allowed us to examine the moderation effect of study-level variables. Thus, subgroup-moderator analyses were conducted using a mixed-effects model in which the random-effects model was used to pool studies within subgroups, whereas between-subgroup differences were tested as fixed effects. We also ran meta-regression analyses to examine the association between treatment duration and treatment outcomes (severity of depressive symptoms and treatment response).

Exploration of Variation in Effects: Participant-Level Moderators

We tested whether available demographic and clinical characteristics moderated the effect of self-guided iCBT on depression outcomes (depressive symptoms severity and treatment response). Not all included studies reported data on the examined moderators (for precise numbers regarding the missing data, see Table 1 and Table 2). To examine moderators, we added the interaction between each potential moderator and treatment outcome on depression severity into the multilevel mixed-effects linear regression model. We similarly added the interaction between each potential moderator and treatment response into the multilevel mixed-effects logistic regression model. Each potential moderator was included in a separate model as a main effect.

Treatment Adherence as a Predictor Within the Treatment Group

We examined whether adherence to treatment predicted within treatment group effect size for the experimental condition only, using a linear mixed model, which regressed posttreatment depressive symptoms severity on treatment adherence and baseline depressive symptoms severity (fixed effects) and using random intercepts for the studies. Treatment adherence was defined as the total number of sessions that each participant completed divided by the total number of treatment sessions.

Results

Study Selection and IPD Obtained

The systematic search resulted in 16 eligible articles of 1885 full-text articles screened. We were able to obtain IPD from

Table 1. Mixed-Effects Model Outcomes on Depressive Symptom Severity for 1-Stage Individual Patient Data

Variable	Full Sample			Complete Cases Analysis ^a		
	No. of Observations (No. of Studies)	Mean (SE) β^b	2-Tailed P Value	No. of Observations (No. of Studies)	Mean (SE) β^b	2-Tailed P Value
Main effects of depression severity						
Baseline severity	3795 (13)	0.57 (0.02)	<.001	2818 (13)	0.57 (0.02)	<.001
Treatment group		-0.21 (0.03)	<.001		-0.19 (0.03)	<.001
Age						
Baseline severity	3786 (13)	0.58 (0.02)	<.001	2809 (13)	0.57 (0.02)	
Treatment group		-0.32 (0.10)	<.001		-0.33 (0.11)	.003
Age \times treatment group		0.003(0.002)	.28		0.003 (0.002)	.19
Sex						
Baseline severity	3788 (13)	0.58 (0.02)	<.001	2811 (13)	0.57 (0.02)	<.001
Treatment group		-0.22 (0.03)	<.001		-0.22 (0.04)	<.001
Sex \times treatment group		0.05 (0.06)	.45		0.07 (0.06)	.26
Educational level						
Baseline severity	2538 (10)	0.58 (.024)	<.001	1973 (10)	0.57 (0.02)	<.001
Treatment group		-0.031 (0.011)	<.001		-0.31 (0.12)	.00
Educational level \times treatment group						
Secondary vs primary education		0.15 (0.13)	.21		0.19 (0.13)	.14
Tertiary vs primary education		0.03 (0.13)	.79		0.02 (0.13)	.84
Relationship status						
Baseline severity	3568 (12)	0.57 (0.02)	<.001	2630 (12)	0.56 (0.02)	<.001
Treatment group		-0.20 (0.05)	<.001		-0.18 (0.05)	<.001
Relationship status \times treatment group		0.006 (0.06)	.91		-0.004 (0.06)	.95
Employment status						
Baseline severity	3067 (10)	0.55 (0.02)	<.001	2194 (10)	0.53 (0.02)	<.001
Treatment group		-0.27 (0.06)	<.001		-0.26 (0.07)	<.001
Employment status \times treatment group		0.12 (0.08)	.11		0.14 (0.08)	.07
Comorbid anxiety						
Baseline severity	1728 (9)	0.62 (0.03)	<.001	1447 (9)	0.62 (0.03)	<.001
Treatment group		-0.20 (0.05)	<.001		-0.19 (0.05)	<.001
Comorbid anxiety \times treatment group		-0.10 (0.07)	.17		-0.11 (0.07)	.13
Baseline severity of depression						
Baseline severity	3795 (13)	0.59 (0.02)	<.001	2818 (13)	0.59 (0.02)	<.001
Treatment group		-0.20 (0.03)	<.001		-0.19 (0.03)	<.001
Baseline severity \times treatment group		-0.03 (0.03)	.22		-0.04 (0.03)	.17

^a This is a sensitivity analysis that was conducted including only participants who completed posttreatment depression questionnaires.

Inventory I or II,^{23,24} Center for Epidemiological Studies-Depression Scale,²² and 9-item Patient Health Questionnaire.²⁵

^b Standardized β weights of the composite z scores of the Beck Depression

Inventory, and the United Kingdom (eTable 1 in the Supplement presents a summary of study characteristics).

Study and Participant Characteristics

Seven of the included studies^{30,31,34,35,37,38} recruited participants through the community. The included RCTs examined iCBT, with interventions comprising 5 to 11 online sessions. Four of the included trials provided support related to the technical aspects of the online platforms,^{15,31,33,36} whereas 9 trials were purely self-guided.^{12-14,30,32,34,35,37,38} The control conditions used were attention placebo, no treatment, treatment as usual, or waiting list. The included studies were conducted in 6 countries: Australia, Germany, Spain, Switzerland, the Neth-

erlands, and the United Kingdom (eTable 1 in the Supplement presents a summary of study characteristics).

Of the 3876 study participants, the mean (SD) age was 42.0 (11.7) years, 2531 (66.0%) of 3832 were female, 1368 (53.1%) of 2574 completed secondary education, and 2262 (71.9%) of 3146 were employed. The mean baseline depressive symptoms scores were 25.7 on the Center of Epidemiologic Studies-Depression Scale, 28.3 on the Beck Depression Inventory, and 14.1 on the 9-item Patient Health Questionnaire in their respective studies. Finally, 71 (1.8%) of 3876 randomized participants did not start the treatment or did not provide baseline and posttreatment data, and 1048 (27.0%) of 3876 dropped out of the RCT and did not provide posttreatment depressive symptoms scores. (eTable 2 in the Supplement provides a summary of participants' characteristics.)

Table 2. Outcomes on Treatment Response for 1-Stage Individual Patient Data^a

Variable	Full Sample			Complete Cases Analysis ^a		
	No. of Observations (No. of Studies)	Mean (SE) β^b	2-Tailed P Value	No. of Observations (No. of Studies)	Mean (SE) β^b	2-Tailed P Value
Main effects of treatment response for treatment group	3795 (13)	0.53 (0.09)	<.001	2818 (13)	0.50 (0.09)	<.001
Age						
Treatment group	3786 (13)	0.70 (0.32)	.04	2809 (13)	0.70 (0.33)	.03
Age \times treatment group		-.004 (0.007)	.60		-0.005 (0.007)	.53
Sex						
Treatment group	3788 (13)	0.56 (0.09)	<.001	2811 (13)	0.54 (0.11)	<.001
Sex \times treatment group		-0.07 (0.18)	.68		-0.09 (0.18)	.61
Educational level						
Treatment group	2538 (10)	0.83 (0.36)	.03	1973 (10)	0.77 (0.38)	.04
Educational level \times treatment group						
Secondary vs primary education		-0.40 (0.38)	.31		-0.37 (0.41)	.36
Tertiary vs primary education		-0.16 (0.40)	.68		-0.07 (0.42)	.85
Relationship status						
Treatment group	3568 (12)	0.56 (0.14)	<.001	2630 (12)	0.56 (0.14)	<.001
Relationship status \times treatment group		-0.07 (0.18)	.71		-0.10 (0.18)	.58
Employment status						
Treatment group	3067 (10)	0.72 (0.18)	<.001	2194 (10)	0.72 (0.20)	<.001
Employment status \times treatment group		-0.34 (0.21)	.12		-0.40 (0.22)	.07
Comorbid anxiety						
Treatment group	1728 (9)	0.61 (0.16)	<.001	1447 (9)	0.63 (0.17)	<.001
Comorbid anxiety \times treatment group		0.23 (0.26)	.38		0.27 (0.27)	.32
Baseline severity of depression						
Treatment group	3795 (13)	0.53 (0.09)	<.001	2818 (13)	0.50 (0.09)	<.001
Baseline severity \times treatment group		0.03 (0.08)	.41		-0.023 (0.09)	.80

^a This is a sensitivity analysis that was conducted including only participants who completed posttreatment depression questionnaires.

Inventory I or II,^{23,24} Center for Epidemiological Studies–Depression Scale,²² and 9-item Patient Health Questionnaire.²⁵

^b Standardized β weights of the composite z scores of the Beck Depression

Risk of Bias Assessment

All included studies scored low on all examined items of the Cochrane risk of bias tool. Random allocation sequences were adequately generated, and the allocation was sufficiently concealed in all included RCTs. Participants were not masked because this is difficult to achieve in psychotherapy research. All studies used self-report outcome measures. Missing data were imputed as part of the present IPD to minimize study attrition bias. Finally, studies were assessed as being free of outcome reporting bias and other sources of bias (eTable 3 in the Supplement).

Results of Traditional Meta-analysis

Sixteen studies examined the comparison between self-guided iCBT and control groups. The results of the traditional meta-analysis revealed that self-guided iCBT outperformed the control conditions at posttreatment assessment ($g = 0.33$; 95% CI, 0.19–0.46; $P < .001$). Heterogeneity was moderate to high and significant ($I^2 = 71\%$; 95% CI, 51%–82%; $P < .001$). There was no significant difference between the outcome findings of studies included in the present IPD meta-analysis and studies with unavailable data ($P = .95$) (Figure 2). There was some indication of publication bias. With the use of the Duval and

Tweedie trim and fill method, values for 5 studies were imputed and the point estimate reduced to $g = 0.21$ (95% CI, 0.07–0.34), and the Egger test result was significant ($P < .001$) (eFigure 1 in the Supplement).

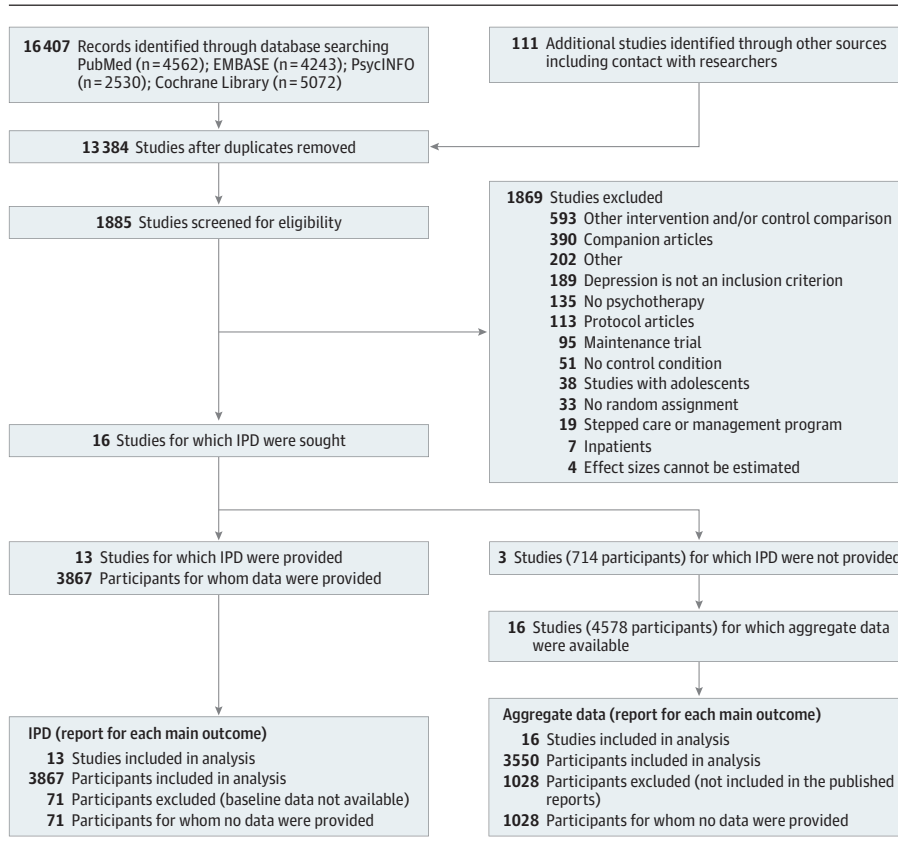
One-Stage IPD Meta-analysis: Depressive Symptoms Severity

Table 1 presents the main findings of the 1-stage IPD meta-analysis on depressive symptoms severity after testing (ranging from 6 to 16 weeks after randomization). There was a significant effect of self-guided iCBT over control conditions on depressive symptoms ($\beta = -0.21$; $P < .001$). Complete cases yielded similar outcomes ($\beta = -0.19$; $P < .001$). None of the participant-level variables (sociodemographic and clinical characteristics) significantly moderated outcome after treatment (Table 1). However, adherence to treatment predicted significantly better outcomes within the self-guided iCBT group ($\beta = -0.19$; $P = .001$).

Two-Stage IPD Meta-analysis: Depressive Symptoms Severity

The 2-stage IPD meta-analysis resulted in a pooled effect size of $g = 0.27$ (95% CI, 0.17–0.37; $P < .001$) in favor of self-guided iCBT (eTable 4 in the Supplement). Similar outcomes were obtained in complete cases analyses ($g = 0.32$; 95% CI,

Figure 1. Preferred Reporting Items for Systematic Review and Meta-analyses (PRISMA) Individual Patient Data (IPD) Study Selection Process



0.17-0.46; $P < .001$). None of the examined study-level variables (type of comparator condition, recruitment, level of support, and treatment duration) were significantly associated with treatment outcome (eTable 4, eFigure 2, and eFigure 3 in the Supplement).

One-Stage IPD Meta-analysis: Treatment Response

A significant effect in favor of self-guided iCBT over controls was found for treatment response ($\beta = 0.53$; $P < .001$) (Table 2). Complete cases analyses resulted in similar outcomes ($\beta = 0.50$; $P < .001$). None of the sociodemographic and clinical characteristics of participants were significantly associated with treatment response (Table 2). Treatment adherence significantly predicted treatment response ($\beta = 0.90$; $P < .001$).

Two-Stage IPD Meta-analysis: Treatment Response

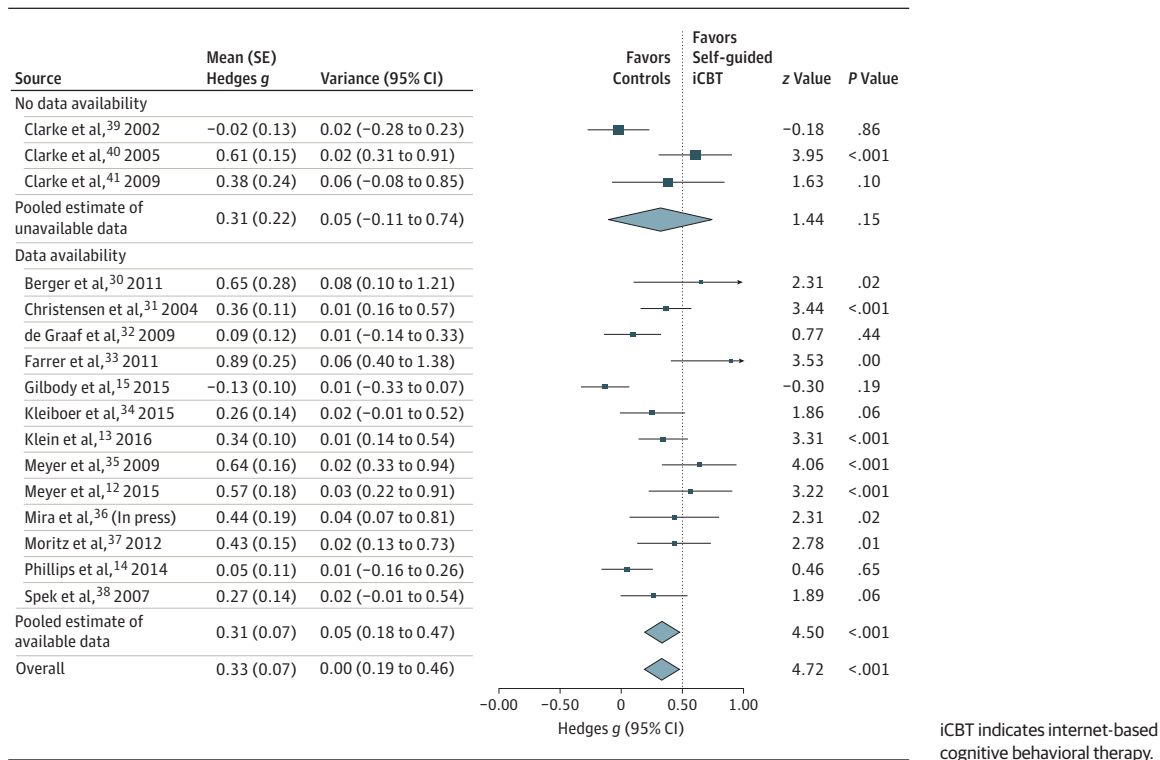
The OR was 1.95 (95% CI, 1.52-2.50; $P < .001$) in favor of the self-guided iCBT group, which corresponds to a NNT of 8 (95% CI, 6-12) (eTable 5 in the Supplement). Similar outcomes were found when we conducted complete case analysis (OR, 1.88; 95% CI, 1.34-2.64; $P < .001$; NNT, 9; 95% CI, 6-17). None of the examined study-level variables was significantly associated with treatment response (eTable 5, eFigure 4, and eFigure 5 in the Supplement).

Discussion

In this study, we examined the effects of self-guided iCBT on severity and treatment response. We aimed to identify moderators of treatment outcome. We found that self-guided iCBT had lower depressive symptom severity and greater treatment response compared with control conditions after testing. These findings were robust in complete case analyses. Treatment adherence was significantly related to treatment outcomes within the self-guided iCBT group. None of the examined participant- and study-level variables significantly moderated the treatment effect.

The finding that self-guided iCBT results in a significant effect on depression outcomes is consistent with previous literature.⁴² However, the present IPD meta-analysis provides stronger evidence and improves the precision of the estimates because of the novel methodologic approach used. Moreover, previous literature⁴² did not examine NNTs. The current findings indicate that we need to treat 8 individuals with depressive symptoms with self-guided iCBT to expect a 50% symptom reduction. Although this NNT is relatively large and its clinical relevance could be doubted, it can still have a considerable effect when large groups of patients use the treatment, especially considering the low costs of self-guided iCBT.

Figure 2. Forest Plot of Traditional Meta-analysis



The role of treatment adherence in outcomes has been identified by a previous review in the field conducted by Donkin and colleagues.⁴³ The authors concluded that the number of sessions correlated with outcomes in the interventions that targeted at depressive symptoms.⁴³ In other words, participants did better when they adhered to the intervention. However, treatment adherence follows the course of the intervention and may be influenced by response to treatment as much as vice versa. As previous research findings⁴⁴ have suggested, there may be different preexisting factors (eg, age and sex) that influence the association between treatment adherence and treatment outcomes.

It is also interesting that baseline depressive symptoms scores did not moderate treatment outcomes. This finding contrasts with the findings of the IPD meta-analysis of low-intensity interventions by Bower et al,¹⁶ who found that higher levels of depressive symptoms at baseline were associated with better depressive outcomes (greater decrease in depressive symptoms) after the completion of low-intensity interventions. However, this effect was relatively small. The authors concluded that it might not be clinically relevant and that it is safer to assume that low-intensity interventions work equally across a range of severities.

Strengths and Limitations

Among the strengths of the present study was its high power to detect small statistically significant differences between intervention and controls and to yield more precise and robust evidence compared with traditional meta-analyses. Moreover, the included RCTs had high methodologic quality, which

allows us to be confident that the present analysis is relatively free of critical biases. However, many internet-delivered interventions incorporate repeated use of symptom inventories with each online session. This repeated administration of symptom inventories might yield lower mean scores with each wave of measurement (completer biases related to self-report ratings).⁴⁵ Moreover, the included studies did not report on recruitment issues related to large-scale, fully unguided internet-administered interventions, including factors such as repeated registration attempts by individuals who did not meet inclusion criteria or who were dissatisfied with their intervention allocation. These matters constitute a potential threat to validity and should be addressed by future research in this field.

Several limitations of our IPD meta-analysis should be mentioned. We observed moderate to high heterogeneity. Unfortunately, the subgroup analyses did not provide any indication of which study-level variables are associated with the observed heterogeneity. Moreover, our findings are at risk (albeit low) of availability bias because we could not access data from 3 eligible studies of the 16. However, the results of the traditional meta-analysis indicated that the findings of these 3 unavailable trials did not differ from the findings of the included RCTs. Another limitation is that we could not examine duration of symptoms as a potential moderator of treatment outcome. Duration of symptoms is important because individuals with chronic depressive symptoms may not always respond rapidly to treatment. Furthermore, most of the included trials recruited their self-referred participants through the community, thereby limiting our ability to generalize the present results to clinical samples. Finally, there was some in-

dication of publication bias, suggesting that unpublished trials with negative findings might be missing from the present sample of studies.

Conclusions

Self-guided iCBT produces results that are encouraging. The absence of a significant difference in treatment outcomes associated with clinical and sociodemographic characteristics implies that self-guided iCBT can be used by most individuals with depressive symptoms regardless of the severity of their symptoms or their sociodemographic background. Currently, antidepressant medications are widely used in the treatment of depressive symptoms, whereas psychotherapeutic interventions are provided to a lesser degree, despite many individuals with depressive symptoms preferring psychotherapy to antidepressants.⁴⁶ However, the high treatment costs and the limited number of trained clinicians hamper the implementation of psychotherapy in practice.

The findings of the present IPD meta-analysis suggest that self-guided iCBT may be a viable alternative to current first-

step treatment approaches for symptoms of depression, particularly in those individuals who are not willing to have any therapeutic contact. This form of intervention seems to be valuable for patients with primary depressive problems and those with depressive symptoms in the context of a primary somatic problem.^{47,48} This self-help form of CBT can provide treatment access at low cost to large numbers of individuals worldwide who have depressive symptoms. Although it is beyond the scope of this study, unguided iCBT has several limitations that should be addressed before it is disseminated as part of routine care (eg, high dropout rates, small effects compared with face-to-face and guided internet interventions, and possible participant selection bias).

Given the effects found for treatment adherence, future research should focus on improving retention of participants in self-guided iCBT programs with the aim of maximizing positive therapeutic outcomes. Further research is also needed to examine additional moderators (eg, sleep quality, cognitive performance, duration of symptoms), long-term outcomes, and the value of adding therapist or coach support to these treatments. Finally, future studies should focus on the pragmatic effectiveness of iCBT in routine care settings.

ARTICLE INFORMATION

Accepted for Publication: January 5, 2017.

Published Online: February 22, 2017.

doi:10.1001/jamapsychiatry.2017.0044

Author Affiliations: Department of Clinical Psychology and EMGO Institute for Health and Care Research, Vrije Universiteit Amsterdam, Amsterdam, the Netherlands (Karyotaki, Riper, Kleiboer, Huibers, Cuijpers); Department of Epidemiology and Biostatistics and EMGO Institute for Health and Care Research, Vrije Universiteit University Amsterdam, Amsterdam, the Netherlands (Twisk, Cuijpers); Department of Psychiatry, Geestelijke Gezondheidszorg inGeest inGeest and Vrije Universiteit University Medical Centre, Amsterdam, the Netherlands (Hoogendoorn); EMGO Institute for Health and Care Research, Vrije Universiteit Amsterdam, Amsterdam, the Netherlands (Hoogendoorn); Department of Psychology and Technology, Jaume University, Castellon, Spain (Mira, Botella, Bretón-López); Black Dog Institute and University of New South Wales, Prince of Wales Hospital, Sydney, Australia (Mackinnon, Christensen); Center for Mental Health, University of Melbourne, Melbourne, Australia (Mackinnon); Research Department, Gaia AG, Hamburg, Germany (Meyer); Department of Psychology, City University, London, England (Meyer); IBER of Physiopathology of Obesity and Nutrition, Santiago de Compostela, Spain (Botella, Bretón-López); Department of Health Sciences, University of York, York, England (Littlewood, Gilbody); Department of Behavioural Sciences and Learning, Sweden Institute for Disability Research, Linköping University, Linköping, Sweden (Andersson); Department of Clinical Neuroscience, Psychiatry Section, Karolinska Institute for Disability Research, Stockholm, Sweden (Andersson); Department of Psychiatry and Psychotherapy, Luebeck University, Luebeck, Germany (Klein); Department of Psychiatry and Psychotherapy, University Medical

Center Hamburg-Eppendorf, Hamburg, Germany (Schröder, Moritz); Institute of Mental Health, University of Nottingham, Nottingham, England (Scheider); Research School of Psychology, College of Biology, Medicine & Environment, Australian National University, Canberra, Australia (Griffiths); Centre for Mental Health Research, The Australian National University, Canberra, Australia (Farrer); Department of Primary Care and Public Health Sciences, King's College London, London, England (Phillips); Department of Clinical Psychology and Psychotherapy, University of Bern, Bern, Switzerland (Berger); Department of Psychology and Health, Tilburg University and Diagnostic Centre Eindhoven, Eindhoven, the Netherlands (Pop, Spek).

Author Contributions: Ms Karyotaki had full access to all the data in the study and takes responsibility for the integrity of the data and the accuracy of the data analysis.

Study concept and design: Karyotaki, Kleiboer, Mira, Botella Arbona, Bretón-López, Gilbody, Moritz, Cuijpers.

Acquisition, analysis, or interpretation of data:

Karyotaki, Riper, Twisk, Hoogendoorn, Kleiboer, Mackinnon, Meyer, Littlewood, Andersson, Christensen, Klein, Schröder, Scheider, Griffiths, Farrer, Huibers, Phillips, Gilbody, Moritz, Berger, Pop, Spek, Cuijpers.

Drafting of the manuscript: Karyotaki, Mira, Botella Arbona, Bretón-López, Moritz.

Critical revision of the manuscript for important intellectual content: Riper, Twisk, Hoogendoorn, Kleiboer, Mackinnon, Meyer, Littlewood,

Andersson, Christensen, Klein, Schröder, Scheider, Griffiths, Farrer, Huibers, Phillips, Gilbody, Berger, Pop, Spek, Cuijpers.

Statistical analysis: Karyotaki, Twisk, Hoogendoorn, Mackinnon, Pop.

Obtained funding: Riper, Scheider, Gilbody, Cuijpers.

Administrative, technical, or material support: Mira, Botella Arbona, Littlewood, Andersson, Christensen, Klein, Schröder, Bretón-López, Farrer,

Gilbody, Moritz, Spek, Cuijpers.

Study supervision: Riper, Kleiboer, Moritz, Cuijpers.

Conflict of Interest Disclosures: Dr Klein reported receiving funding for clinical trials (German Federal Ministry of Health, Servier), payments for presentations on internet interventions (Servier), and payments for workshops and books (Beltz, Elsevier and Hogrefe) on psychotherapy for chronic depression and psychiatric emergencies. No other disclosures were reported.

Funding/Support: This work was performed under grant 603098 for the European Comparative Effectiveness Research on Internet-based Depression Treatment (E-COMPARED) project funded by the European Commission's Seventh Framework Program. At the time of the study, Dr Griffiths was supported by National Health & Medical Research Council Fellowship 1059620.

Role of the Funder/Sponsor: The European Commission had no role in the design and conduct of the study; collection, management, analysis, and interpretation of the data; preparation, review, or approval of the manuscript; and decision to submit the manuscript for publication. The decision to submit the article for publication was a condition of the funding and was made before any results were available.

Additional Contributions: Carmen Domnica Cotet, PhD, helped with data extraction and did not receive additional compensation in association with her work on this article.

REFERENCES

1. Cuijpers P, Andersson G, Donker T, van Straten A. Psychological treatment of depression: results of a series of meta-analyses. *Nord J Psychiatry*. 2011; 65(6):354-364.
2. Cuijpers P, Sijbrandij M, Koole SL, Andersson G, Beekman AT, Reynolds CF III. The efficacy of psychotherapy and pharmacotherapy in treating

- depressive and anxiety disorders: a meta-analysis of direct comparisons. *World Psychiatry*. 2013;12(2):137-148.
3. Karyotaki E, Smit Y, Holdt Henningsen K, et al. Combining pharmacotherapy and psychotherapy or monotherapy for major depression? a meta-analysis on the long-term effects. *J Affect Disord*. 2016;194(1):144-152.
 4. Karyotaki E, Smit Y, de Beurs DP, et al. The long-term efficacy of acute-phase psychotherapy for depression: a meta-analysis of randomized trials. *Depress Anxiety*. 2016;33(5):370-383.
 5. Mohr DC, Hart SL, Howard I, et al. Barriers to psychotherapy among depressed and nondepressed primary care patients. *Ann Behav Med*. 2006;32(3):254-258.
 6. Titov N. Internet-delivered psychotherapy for depression in adults. *Curr Opin Psychiatry*. 2011;24(1):18-23.
 7. Barney LJ, Griffiths KM, Christensen H, Jorm AF. Exploring the nature of stigmatising beliefs about depression and help-seeking: implications for reducing stigma. *BMC Public Health*. 2009;9(1):61.
 8. Schröder J, Sautier L, Kriston L, et al. Development of a questionnaire measuring Attitudes towards Psychological Online Interventions-the APOI. *J Affect Disord*. 2015;187(8):136-141.
 9. Andrews G, Henderson S, Hall W. Prevalence, comorbidity, disability and service utilization: overview of the Australian National Mental Health Survey. *Br J Psychiatry*. 2001;178(2):145-153.
 10. Spijker J, Bijl RV, de Graaf R, Nolen WA. Care utilization and outcome of DSM-III-R major depression in the general population: results from the Netherlands Mental Health Survey and Incidence Study (NEMESIS). *Acta Psychiatr Scand*. 2001;104(1):19-24.
 11. Andersson G, Cuijpers P. Internet-based and other computerized psychological treatments for adult depression: a meta-analysis. *Cogn Behav Ther*. 2009;38(4):196-205.
 12. Meyer B, Bierbrodt J, Schröder J, et al. Effects of an internet intervention (Deprexis) on severe depression symptoms: randomized controlled trial. *Internet Interventions*. 2015;2(1):48-59.
 13. Klein JP, Berger T, Schröder J, et al. Effects of a psychological internet intervention in the treatment of mild to moderate depressive symptoms: results of the EVIDENT Study, a randomized controlled trial. *Psychother Psychosom*. 2016;85(4):218-228.
 14. Phillips R, Schneider J, Molosankwe I, et al. Randomized controlled trial of computerized cognitive behavioural therapy for depressive symptoms: effectiveness and costs of a workplace intervention. *Psychol Med*. 2014;44(4):741-752.
 15. Gilbody S, Littlewood E, Hewitt C, et al; REEACT Team. Computerised cognitive behaviour therapy (cCBT) as treatment for depression in primary care (REEACT trial): large scale pragmatic randomised controlled trial. *BMJ*. 2015;351:h5627.
 16. Bower P, Kontopantelis E, Sutton A, et al. Influence of initial severity of depression on effectiveness of low intensity interventions: meta-analysis of individual patient data. *BMJ*. 2013;346:f540.
 17. Stewart LA, Clarke M, Rovers M, et al; PRISMA-IPD Development Group. Preferred Reporting Items for Systematic Review and Meta-analyses of individual participant data: the PRISMA-IPD statement. *JAMA*. 2015;313(16):1657-1665.
 18. Cuijpers P, van Straten A, Warmerdam L, Andersson G. Psychological treatment of depression: a meta-analytic database of randomized studies. *BMC Psychiatry*. 2008;8(1):36.
 19. Hamilton KE, Dobson KS. Cognitive therapy of depression: pretreatment patient predictors of outcome. *Clin Psychol Rev*. 2002;22(6):875-893.
 20. Higgins JPT, Altman DG, Sterne JAC. Assessing risk of bias in included studies. In: Higgins JP, Green S, eds. *Cochrane Handbook for Systematic Reviews of Interventions: Version 5.1.0 (Updated March 2011)*. London, England: The Cochrane Collaboration; 2011.
 21. Cohen J. *Statistical Power Analysis for the Behavioral Sciences*. 2nd ed. Hillsdale, NJ: Lawrence Erlbaum Associates; 1988.
 22. Radloff LS. The CES-D scale a self-report depression scale for research in the general population. *Appl Psychol Meas*. 1977;1(3):385-401.
 23. Beck AT, Ward C, Mendelson M. Beck Depression Inventory (BDI). *Arch Gen Psychiatry*. 1961;4(6):561-571.
 24. Beck A, Steer R, Brown G. *BDI-II, Beck Depression Inventory Manual*. San Antonio, TX: Psychological Corp; 1996.
 25. Kroenke K, Spitzer RL, Williams JB. The PHQ-9: validity of a brief depression severity measure. *J Gen Intern Med*. 2001;16(9):606-613.
 26. Rubin DB. *Multiple Imputation for Nonresponse in Surveys*. John Wiley & Sons; 2004.
 27. Debray TP, Moons KG, Abo-Zaid GMA, Koffijberg H, Riley RD. Individual participant data meta-analysis for a binary outcome: one-stage or two-stage? *PLoS One*. 2013;8(4):e60650.
 28. Stewart LA, Parmar MK. Meta-analysis of the literature or of individual patient data: is there a difference? *Lancet*. 1993;341(8842):418-422.
 29. Riley RD, Lambert PC, Abo-Zaid G. Meta-analysis of individual participant data: rationale, conduct, and reporting. *BMJ*. 2010;340:c221.
 30. Berger T, Hämmerli K, Gubser N, Andersson G, Caspar F. Internet-based treatment of depression: a randomized controlled trial comparing guided with unguided self-help. *Cogn Behav Ther*. 2011;40(4):251-266.
 31. Christensen H, Griffiths KM, Jorm AF. Delivering interventions for depression by using the internet: randomised controlled trial. *BMJ*. 2004;328(7434):265.
 32. de Graaf LE, Gerhards SA, Arntz A, et al. Clinical effectiveness of online computerised cognitive-behavioural therapy without support for depression in primary care: randomised trial. *Br J Psychiatry*. 2009;195(1):73-80.
 33. Farrer L, Christensen H, Griffiths KM, Mackinnon A. Internet-based CBT for depression with and without telephone tracking in a national helpline: randomised controlled trial. *PLoS One*. 2011;6(11):e28099.
 34. Kleiboer A, Donker T, Seekles W, van Straten A, Riper H, Cuijpers P. A randomized controlled trial on the role of support in Internet-based problem solving therapy for depression and anxiety. *Behav Res Ther*. 2015;72(6):63-71.
 35. Meyer B, Berger T, Caspar F, Beevers CG, Andersson G, Weiss M. Effectiveness of a novel integrative online treatment for depression (Deprexis): randomized controlled trial. *J Med Internet Res*. 2009;11(2):e15.
 36. Mira A, Bretón-López J, García-Palacios A, Quero S, Baños RM, Botella C. An internet-based program for depressive symptoms using human and automated support: a randomized control trial. *Neuropsychiatr Dis Treat*. In press.
 37. Moritz S, Schilling L, Hauschildt M, Schröder J, Tressl A. A randomized controlled trial of internet-based therapy in depression. *Behav Res Ther*. 2012;50(7-8):513-521.
 38. Spek V, Nyklicek I, Smits N, et al. Internet-based cognitive behavioural therapy for subthreshold depression in people over 50 years old: a randomized controlled clinical trial. *Psychol Med*. 2007;37(12):1797-1806.
 39. Clarke G, Reid E, Eubanks D, et al. Overcoming depression on the Internet (ODIN): a randomized controlled trial of an Internet depression skills intervention program. *J Med Internet Res*. 2002;4(3):E14.
 40. Clarke G, Eubanks D, Reid E, et al. Overcoming Depression on the Internet (ODIN) (2): a randomized trial of a self-help depression skills program with reminders. *J Med Internet Res*. 2005;7(2):e16.
 41. Clarke G, Kelleher C, Hornbrook M, Debar L, Dickerson J, Gullion C. Randomized effectiveness trial of an Internet, pure self-help, cognitive behavioral intervention for depressive symptoms in young adults. *Cogn Behav Ther*. 2009;38(4):222-234.
 42. Richards D, Richardson T. Computer-based psychological treatments for depression: a systematic review and meta-analysis. *Clin Psychol Rev*. 2012;32(4):329-342.
 43. Donkin L, Christensen H, Naismith SL, Neal B, Hickie IB, Glozier N. A systematic review of the impact of adherence on the effectiveness of e-therapies. *J Med Internet Res*. 2011;13(3):e52.
 44. Karyotaki E, Kleiboer A, Smit F, et al. Predictors of treatment dropout in self-guided web-based interventions for depression: an 'individual patient data' meta-analysis. *Psychol Med*. 2015;45(13):2717-2726.
 45. Jorm AF. Evaluations of Web-based psychological interventions need to avoid the re-test artefact. *Aust N Z J Psychiatry*. 2009;43(9):877-877.
 46. van Schaik DJ, Klijn AF, van Hout HP, et al. Patients' preferences in the treatment of depressive disorder in primary care. *Gen Hosp Psychiatry*. 2004;26(3):184-189.
 47. Fischer A, Schröder J, Vettorazzi E, et al. An online programme to reduce depression in patients with multiple sclerosis: a randomised controlled trial. *Lancet Psychiatry*. 2015;2(3):217-223.
 48. Schröder J, Brückner K, Fischer A, et al. Efficacy of a psychological online intervention for depression in people with epilepsy: a randomized controlled trial. *Epilepsia*. 2014;55(12):2069-2076.