

# VU Research Portal

## Pathophysiology of pelvic organ prolapse:

Ruiz Zapata, A.M.

2015

### **document version**

Publisher's PDF, also known as Version of record

[Link to publication in VU Research Portal](#)

### **citation for published version (APA)**

Ruiz Zapata, A. M. (2015). *Pathophysiology of pelvic organ prolapse: cells, matrices and their interactions*. [PhD-Thesis - Research and graduation internal, Vrije Universiteit Amsterdam].

### **General rights**

Copyright and moral rights for the publications made accessible in the public portal are retained by the authors and/or other copyright owners and it is a condition of accessing publications that users recognise and abide by the legal requirements associated with these rights.

- Users may download and print one copy of any publication from the public portal for the purpose of private study or research.
- You may not further distribute the material or use it for any profit-making activity or commercial gain
- You may freely distribute the URL identifying the publication in the public portal

### **Take down policy**

If you believe that this document breaches copyright please contact us providing details, and we will remove access to the work immediately and investigate your claim.

### **E-mail address:**

[vuresearchportal.ub@vu.nl](mailto:vuresearchportal.ub@vu.nl)

## **CHAPTER 6**

### **Pelvic organ prolapse decreases the quality of the matrix produced by vaginal fibroblastic cells *in vitro***

A.M. Ruiz-Zapata  
M.H. Kerkhof  
S. Ghazanfari  
B. Zandieh-Doulabi  
R. Stoop  
T.H. Smit  
M.N. Helder

**Submitted**

## ABSTRACT

Pelvic organ prolapse (POP) is characterised by the weakening of the pelvic floor support tissues, and often by subsequent prolapse of the bladder outside the body, *i.e.* cystocele. The bladder is kept in place by the anterior vaginal wall which consists of a dense extracellular matrix that is maintained and remodelled by fibroblastic cells, *i.e.* fibroblasts and myofibroblasts. Since altered matrix production influences tissue quality, and myofibroblasts are involved in normal and pathological soft tissue repair processes, we evaluated matrix production of cells derived from pre- and post-menopausal POP and non-POP control anterior vaginal wall tissues. Results showed that cells from postmenopausal POP women deposited matrices with high percentage of collagen fibres with less anisotropic orientation and increased stiffness than those produced by controls. There was a transient increase in myofibroblastic phenotype that was lost after the peak of tissue remodelling.

In conclusion, affected fibroblasts from postmenopausal prolapsed tissues produced altered matrices *in vitro* compared to controls. Such aberrant altered matrix production does not appear to be a consequence of abnormal phenotypical changes towards the myofibroblastic lineage.

## INTRODUCTION

Pelvic organ prolapse (POP) is characterised by the weakening of the pelvic floor supportive tissues with subsequent prolapse of the uterus, rectum and/or most commonly the bladder outside the body<sup>1-3</sup>. POP affects almost 50% of postmenopausal women causing them to suffer chronic pain, urinary incontinence, and voiding and sexual dysfunctions<sup>1,2</sup>. There is a strong genetic component in some women affected with prolapse<sup>4</sup> but environmental factors related to increased abdominal pressure such as parity, physiological ageing and obesity, also seem to play an important role in the development of the disease in many patients<sup>5</sup>.

In healthy women the bladder is kept in place by the connective-tissue layer of the anterior vaginal wall which is a dense extracellular matrix (ECM) with relatively few cells. The ECM obtains its strength from the fibrillar proteins (collagen I, III, V and elastin)<sup>6</sup> and is produced and maintained by fibroblastic cells, *i.e.* fibroblasts and myofibroblasts. Fibroblastic cells remodel their surrounding matrix and maintain tissue homeostasis by producing anabolic molecules and catabolic enzymes such as the matrix metalloproteinases (MMPs). Matrix production and remodelling affect the composition and mechanical properties of the surrounding tissues whose integrity depends on a balance between ECM synthesis and degradation.

In prolapsed tissues however, this balance seems to be lost as studies indicate that the metabolism of collagen and elastin is altered<sup>7</sup>. In patients with cystocele the prolapsed anterior vaginal wall tissues were shown to have disorganized collagen and elastin fibres<sup>8</sup>; increased enzymatic activity<sup>9-11</sup>; altered elastin<sup>12,13</sup> and collagen content<sup>9,10,14-16</sup>; altered collagen cross-linking<sup>9,17</sup>; and increased stiffness<sup>16,18-20</sup>. Fibroblastic cells derived from prolapsed anterior vaginal wall tissues are also affected as their contractile capacities are lower than non-prolapsed cells<sup>21-23</sup> and their mechanoresponses are altered<sup>23-24</sup>. Prolapse therefore affects tissue composition, tissue mechanical properties and cell behaviour. Nevertheless it is not known if prolapse also affects the capacity of the cells to produce and remodel ECM. Therefore, in the present study we hypothesize that prolapse affects fibroblastic cells matrix production and remodelling. To test our hypothesis we evaluated the *in vitro* matrix production of primary cells derived from vaginal tissues from pre- and post-menopausal women with and without POP. The quantity and quality of the deposited matrix were tested for various proteins. In particular, collagen I fibre orientation was visualized and quantified. The mechanical properties of the matrices were measured using micro-indentation. We also followed cellular differentiation towards the myofibroblastic phenotype using  $\alpha$ -smooth muscle actin ( $\alpha$ -SMA) which was detected by western immunoblotting.

## METHODS

### Patient selection, tissue processing, and cell isolation

Patients were recruited from three hospitals in the Netherlands: Kennemer Gasthuis Hospital in Haarlem, VU University Medical Centre, and the Boerhaave Medical Centre in Amsterdam. After consent from all patients, according to institutional guidelines, biopsies were collected from three groups of Caucasian women. A control group of five women undergoing hysterectomy for benign gynaecological reasons, and two groups of women undergoing prolapse surgery (POP-Q stages  $\geq$  II): five premenopausal women (POP pre), and five postmenopausal women (POP post). Women were non-smokers with similar parity and similar POP-Q cystocele stages in POP cases (Table 1). Exclusion criteria were previously described<sup>17</sup>. The tissues collected in the present study were waste material after surgery and not subject to Ethical Committee approval. Full thickness (1cm<sup>2</sup>) vaginal wall tissue biopsies were taken from the pericervical region of the anterior vaginal cuff after hysterectomy in the controls and from the prolapsed vaginal wall in the POP cases. A total of 15 different vaginal patient derived primary fibroblasts were isolated within 24 hours of tissue extraction and cultured using enzymatic digestion as previously described<sup>24</sup>. Cells were grown in an incubator at 37°C, 95% humidity and 5% CO<sub>2</sub>, with culture medium: Dulbecco's modified Eagle's medium-DMEM (Gibco-Life technologies, Paisley, UK) supplemented with 10% foetal bovine serum (FBS; HyClone, South Logan, UT, USA), 100µg/ml streptomycin, 100U/ml penicillin, and 250µg/ml amphotericin-B (Sigma-Aldrich, St. Louis, MO, USA). The cells used in this study were from passages two to four and were at least 94% viable. The initial population of primary cells was characterized by immunocytochemistry analysis as previously described<sup>23</sup>, with markers for mesenchymal cells (vimentin; DakoCytomation, Copenhagen, Denmark), smooth muscle cells (Desmin; DakoCytomation), and endothelial cells (Ulex Europaeus Agglutinin I; Vector Laboratories, Burlingame, CA, USA).

**Table 1. Patient characteristics**

Characteristic	A	B	C	A-B	A-C	B-C
	Control (n = 5)	POP pre (n = 5)	POP post (n = 5)	p-value	p-value	p-value
Age <sup>a</sup>	47.0 ± 4.12	44.6 ± 4.93	59.4 ± 9.34	0.528	0.056	0.032
Parity <sup>b</sup>	3 (1-3)	2 (2-3)	2 (2-3)	0.913	0.914	1.000
POP-Q cystocele stage <sup>b</sup>	0 (0)	2 (2)	2 (2-3,5)			

Data is presented as: mean ± SD<sup>a</sup>, or median (IQR)<sup>b</sup>. Non-parametric statistical tests: Mann-Whitney.

### ***In vitro* matrix production**

The extracellular matrix produced over five weeks by human vaginal primary cells was evaluated for different outcome parameters *in vitro*. Following the manufacturer's instructions, cells were counted using the Muse® count & viability assay kit with the Muse® cell analyzer system (Merck Millipore, Darmstadt, Germany). Cells were cultured with culture media and a seeding density of 10,000 cells/cm<sup>2</sup> in plastic tissue-culture plates and analysed at different time points: 24 hours (0W), 1 weeks (1W), 3 weeks (3W) and 5 weeks (5W). After 24 hours, cells were synchronized for 1 hour at 5°C, and 0W plates were processed as follows: to detect released matrix metalloproteinases (MMPs)-2 and -9, media was replaced by culture media containing 1% FBS (HyClone) and post-incubated for 6 hours in an incubator at 37°C, 95% humidity and 5% CO<sub>2</sub>. Conditioned media was saved for zymogram analysis and cell lysates were collected for total DNA analysis. Samples were also prepared for total fibrillar collagen content.

The rest of the cultures were refreshed with culture media supplemented with 50µg/ml vitamin C (Sigma-Aldrich), and thereafter refreshed every 3 to 4 days with the same medium. After each time point, samples were processed as at 0W. Additionally, samples were collected at 0W, 3W, and 5W for western immunoblotting. At 5W, samples were also collected for surface micro-stiffness, collagen I immunostaining and biochemical analysis (see relevant sections below).

### **Zymogram analysis of secreted MMP-2 and MMP-9**

Secreted MMP-2 and MMP-9 were detected by zymography following the manufacturer's protocol for Novex zymogram gels (10% zymogram gelatin gel, Life Technologies). The dark bands of gelatinolytic activity were visualized with the eStain protein staining device (GeneScript, Piscataway, NJ, USA). Images were acquired with the Biospectrum AC Imaging System (UVP, Cambridge, UK) and zymogram quantification of the density of the bands was performed using Image J 1.44p software (National Institutes of Health, USA).

### **Total DNA analysis**

Fibroblastic cells were seeded on 48-well plates and samples were collected at different time points: 0, 1, 3, 4 and 5 weeks. At the end of each time point, cells were washed with PBS, and 300µl/well of milliQ water was added before samples were stored at -20°C until further analysis. After three freeze and thaw cycles, total DNA of duplicate samples was measured with the CyQuant cell proliferation assay kit according to the manufacturer's specifications (Molecular Probes Inc., Life Technologies). Fluorescence was measured using the Synergy<sup>TM</sup>HT multi-mode microplate reader (Biotek Instruments Inc.).

### **Detection and quantification of fibrillar collagens and non-collagenous proteins**

The total protein content and the fibrillar collagen content of the deposited matrices was measured with the Sirius red/fast green collagen staining kit (Chondrex Inc., Redmond, USA) following the manufacturer's specification. The optical density values (OD) of eluted

dye were measured at 540nm and 605nm with the Synergy<sup>TM</sup>HT multi-mode microplate reader (Biotek Instruments Inc.). Calculations were made with the formulas: total protein =  $\{[\text{OD}_{540} - (\text{OD}_{605} \times 0.291)]/0.0378\} + \text{OD}_{605}/0.00204$ ; collagen =  $[\text{OD}_{540} - (\text{OD}_{605} \times 0.291)]/0.0378$ .

### Western immunoblotting

Cells cultured on 6-well plates were lysed with 700 $\mu$ l/well of Lysis-M buffer including proteinase inhibitor (Roche Diagnostics GmbH, Mannheim, Germany). Protein content was determined using the Pierce BCA Protein Assay kit following the manufacturer's instructions (Thermo Scientific, Rockford, USA). Equal amounts of protein were denatured and separated by electrophoresis on a Bolt<sup>®</sup> 4-12% Bis-Tris Plus gel under reducing conditions and transferred to iBlot<sup>®</sup> PVDF membrane (Life Technologies). Blots were blocked for 1 hour at room temperature with a blocking buffer (PBS with 0.5% Tween-20 and 1% bovine serum albumin; Sigma-Aldrich), then incubated with anti- $\alpha$ -SMA monoclonal antibody (clone 1A4, DakoCytomation) diluted 1:500 in blocking buffer for 1 hour at room temperature and subsequently overnight at 4°C. Bound antibodies were visualized with a horseradish peroxidase-conjugated antibody goat anti-mouse (1:10,000) and the Supersignal west pico chemiluminescence kit (Thermo Scientific). Images were acquired with the Biospectrum AC Imaging System (UVP). Gamma settings were optimized for band clarity. After detection, blots were washed with blocking buffer, incubated for 1 hour at room temperature with mouse anti- $\beta$ -actin antibody (1:5,000; Sigma-Aldrich), and washed three times with PBS. To visualize the bound antibodies with alkaline phosphatase (AP) chromogenic detection blots were washed for 10 minutes at room temperature with Tris Buffer Saline pH 7 (TBS: 0.1M tris with 0.9% NaCl; Sigma-Aldrich), then washed for 10 minutes with AP buffer pH 9.5-10 (100mM NaCl, 0.1M HCl and 5mM MgCl<sub>2</sub>; Sigma-Aldrich), and detected with NBT/BCIP substrate (Roche diagnostics GmbH) diluted in AP buffer (1:100). Images were acquired with the Biospectrum AC Imaging System (UVP). Quantification of the band density was performed using Image J 1.44p software (NIH).

### Surface micro-stiffness

The mechanical properties of the deposited matrices were measured using a newly-developed nano-indentor designed to test the surface stiffness of biological tissues (PIUMA, Optics11, Amsterdam, The Netherlands). After five weeks of culture, four samples per cell type were indented: two were fresh and two were fixated for 1 hour at room temperature with 4% formaldehyde. Samples were washed three times with PBS (Sigma-Aldrich) and indented in PBS with the PIUMA device and according to supplier's instructions (Optics11). We used a soft cantilever on the top of a ferruled optical fibre<sup>25,26</sup> with a radius of 88 $\mu$ m and a stiffness of 0.85N/m. The indentations were depth controlled (15 $\mu$ m) and the loading and unloading periods were set to 3 seconds. Based on the load and displacement curves, the effective Young's modulus was automatically calculated by the

software from the PIUMA (Optics11). To calibrate the probe and the measurement technique, a stiff surface was used before each series of tests.

### **Collagen I immunostaining**

Matrices deposited after five weeks of culture were fixated using 4% formaldehyde, then incubated with blocking buffer (1% BSA, 20% donkey serum, PBS) for 1 hour followed by 2 hours incubation with rabbit polyclonal anti-collagen type I antibody (1:1000, Abcam, USA) at room temperature. After three washings with PBS, Alexa 488 donkey anti-rabbit (1:2000, Invitrogen, USA) was added for 1 hour. Then the slides were washed three times in PBS and mounted with Vectashield mounting medium containing DAPI (Vector Laboratories, USA). Images were taken using an inverted confocal microscope (Leica SP8, Leica, Germany). To evaluate the local fibre orientation we used Orientation J which is an Image J plug-in (NIH) and calculates the local orientation of fibres in every pixel of the image.

### **Biochemical analysis of the collagen cross-links hydroxylysylpyridinoline (HP) and lysylpyridinoline (LP)**

Cells were cultured for five weeks on 6-well plates and then frozen-thawed three times. To allow time for the maturation of collagen cross-links, the acellular matrices were post-incubated for three more weeks in PBS at 37°C. Collagen and the mature collagen cross-links hydroxylysylpyridinoline (HP) and lysylpyridinoline (LP) were measured biochemically with a HPLC system equipped with online sample purification on CC31 cellulose using a Prospekt solid-phase extractor (Separations, Jasco Benelux BV, IJsselstein, The Netherlands) as previously described<sup>17</sup>. The mature collagen cross-links were expressed as (HP + LP)/triple helix.

### **Statistics**

Data are expressed as the median with the interquartile range (IQR) of five independent samples per group. Analyses were performed with Prism software version 6.0 (GraphPad Software Inc., San Diego, CA, USA) using non-parametric Kruskal-Wallis test followed by Dunn's multiple comparisons for the grouped analysis or Mann-Whitney test for paired analysis. Differences were considered significant at 5% level ( $p < 0.05$ ).



## RESULTS

### **Anterior vaginal wall cells from prolapse patients deposit extracellular matrices with less protein content than control cells, but with high collagen content.**

The primary aim of this study was to find out if cells isolated from anterior vaginal wall tissues from women with cystocele deposit different extracellular matrices *in vitro* than cells derived from controls (non-prolapsed tissues). The cells were cultured for five weeks in the presence of vitamin C, and matrix production was tested at 0, 1, 3, 4 and 5 weeks. Results show that matrix production from vaginal cells derived from prolapsed tissues was lower than those from controls, however with high collagen content. Matrix deposition increased overtime with peak values at week 3 for controls, and at week 4 for POP matrices. The total amount of protein was lower in POP than in control matrices only at week 3 (Fig.1A) but the collagen content was similar (Fig.1B). The percentage of collagen fibres in matrices produced by cells from postmenopausal prolapsed women was higher than in the matrices deposited by cells from controls (Fig.1C). The same trend was seen in matrices from premenopausal women with POP (Fig.1C).

### **Fibroblastic cells from women with prolapse produced stiffer matrices than controls.**

Pelvic organ prolapse has been shown to affect cellular behaviour *in vitro*<sup>21-24</sup>. To investigate if prolapse also affects the quality of the matrix produced by vaginal fibroblastic cells *in vitro* we tested the surface micro-stiffness of matrices deposited after 5 weeks of culture. We tested the matrices using a micro-indentor with a soft cantilever on top of a ferruled optical fibre. Results showed that fibroblastic cells derived from postmenopausal women produced stiffer matrices than cells from non-prolapsed tissues with the effective Young modulus being 3 times higher. The same trend was seen in matrices deposited by cells from premenopausal women with prolapse. The difference was even higher in samples fixated with formaldehyde as this treatment increased the stiffness: 4 times in control matrices, 6 times in premenopausal POP matrices and 4 times in postmenopausal POP matrices (Table 2).

### **Collagen type I fibres and cell nuclei were aligned in one preferential direction in control and premenopausal POP groups but not in the postmenopausal POP group.**

One of the main components of the extracellular matrix (ECM) in the anterior vaginal wall is collagen I. Since the orientation of the collagen fibres influences the mechanical properties of the ECM<sup>27</sup> we visualised the collagen I fibre alignment in the deposited matrices after five weeks of culture. Collagen type I fibres and cell nuclei were anisotropically aligned towards a preferential but unspecific direction in all matrices derived from control and premenopausal prolapsed cells (Fig.2A and B). In contrast, 83% of the matrices derived from prolapsed postmenopausal cells had collagen fibres which appeared to have two anisotropically oriented layers (Fig.2C).

**The mature collagen cross-links hydroxylysylpyridinoline (HP) and lysylpyridinoline (LP) were similar.**

Collagen molecules in POP tissues have been reported to have more mature cross-links than those from non-POP tissues<sup>9,17</sup> and we wanted to investigate if this was the case in matrices deposited by vaginal fibroblasts *in vitro*. The high-performance liquid chromatography (HPLC) technique which was used can detect only the mature collagen cross-links hydroxylysylpyridinoline (HP) and lysylpyridinoline (LP). After five weeks of culture, cells were freeze-thawed three times and post-incubated an additional three weeks in PBS at 37°C to allow the development of mature cross-links. No differences were seen in the amount of collagen cross-links within the deposited matrices (Table 3).

**Proliferation of primary human anterior vaginal wall cells was not affected by prolapse nor by menopausal status.**

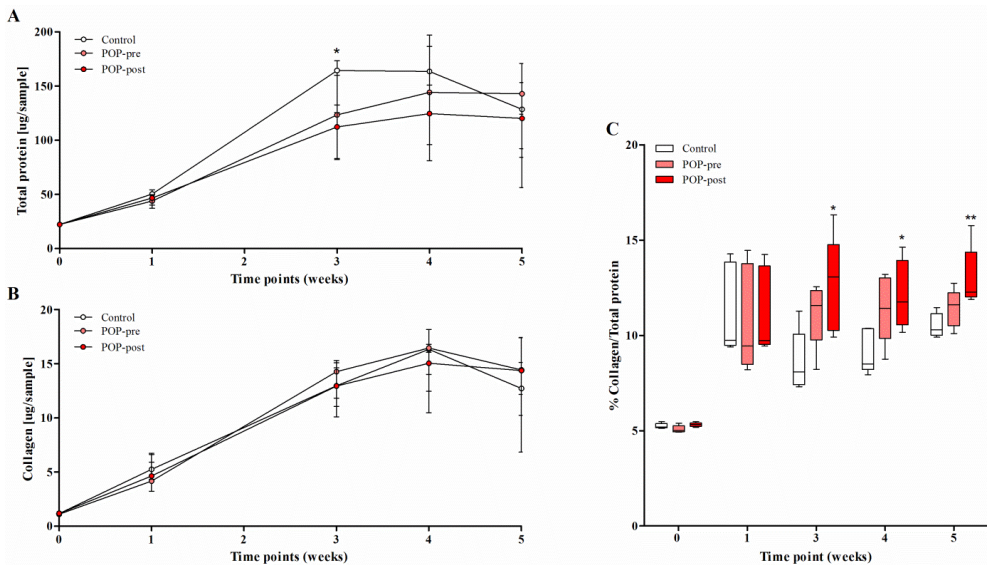
The quality and quantity of the deposited matrices can be affected by the type of cell, the number of cells and their proliferation rate. We first characterised the initial population of primary fibroblastic cells by immunocytochemistry, and we confirmed that the studied cells were from the mesenchymal lineage (vimentin positive), at least 95% smooth muscle free (desmin negative), and negative for the endothelial cell marker Ulex Europaeus Agglutinin-I (UEA-1). These results were consistent with our previous report<sup>23</sup>. We also measured the total DNA of each cell type at the different time points during the five weeks of culture. Cells proliferated normally with a peak at week 4, and with almost no differences in cell number between weeks 4 and 5 (Fig.3). We found no differences in the proliferation rates of the studied groups.

**Vaginal fibroblastic cells secreted matrix metalloproteinases-2 mainly in the active form and with peak secretion at week three.**

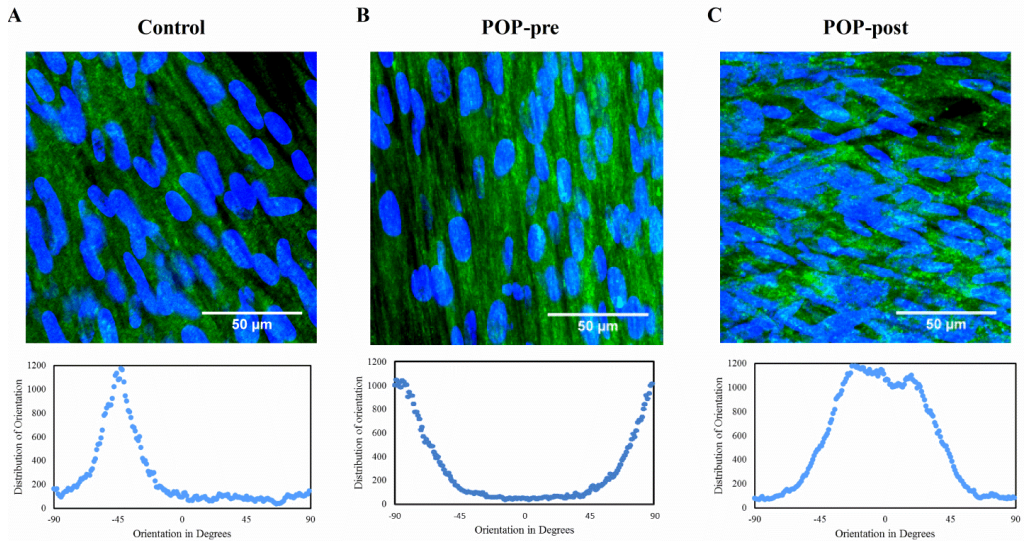
Tissue remodelling seems to be affected in tissues from patients with POP. To achieve a better understanding of tissue remodelling we detected secreted active, and inactive (pro form) matrix metalloproteinases (MMP)-2 and -9 by zymography. To correct for the difference in cell numbers at the different experimental time points, quantitative data was normalised to total DNA. Zymogram results show that most of the secreted enzymes were in the active form of MMP-2. In general, the amount of active MMP-2 secreted by the cells increased from weeks one to three except for prolapsed fibroblasts from premenopausal women (Fig.4B), and decreased again at week four (Fig.4A and C). No major differences were seen between weeks 4 and 5. At the peak of secretion (week three) prolapsed cells from postmenopausal women released slightly higher amounts of active MMP-2 than control cells. At the same time point, cells from premenopausal prolapsed women secreted lower quantities of active MMP-2 than cells from the other two groups but the difference was not significant (Fig.4). We were unable to detect MMP-9, and MMP-2 at week 0 was below detection levels (data not shown).

### Altered matrix production by prolapsed fibroblasts was not a consequence of abnormal phenotypical changes towards the myofibroblastic lineage.

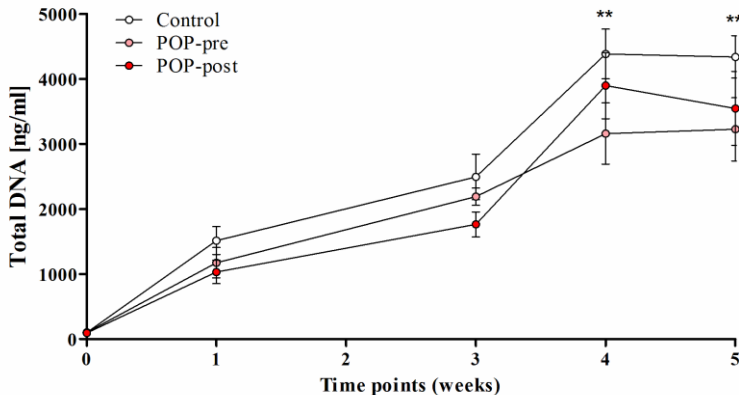
It has been shown *in vitro* that when matrix stiffness is increased fibroblasts differentiate into myofibroblasts<sup>28,29</sup>. To find out whether the increased substrate stiffness of the prolapsed matrices was the result of a change in phenotype from fibroblasts to myofibroblasts, we detected the myofibroblastic marker  $\alpha$ -smooth muscle actin ( $\alpha$ -SMA) at the beginning of the experiments (week 0), at the peak of protein deposition (week 3), and at the ending time point (week 5). Results showed a transient increase in myofibroblastic phenotype as  $\alpha$ -SMA increased by week three, and thereafter were significantly lower from weeks three to five (Fig.5). There were no differences in cellular  $\alpha$ -SMA protein content between the groups.



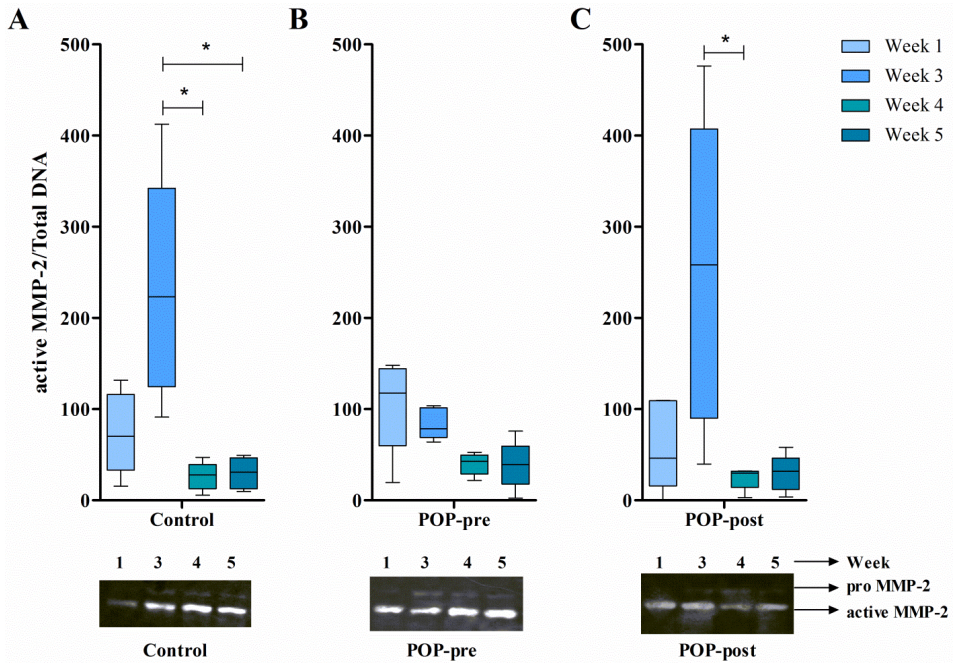
**Figure 1. Fibroblastic cells from postmenopausal prolapsed tissues deposit less extracellular matrix than controls, but with high collagen content.** Cells derived from prolapsed tissues from premenopausal (POP-pre) and postmenopausal (POP-post) women were cultured *in vitro* for five weeks in the presence of vitamin C and compared to controls. The deposited matrices were stained with Sirius red/fast green collagen staining kit (Chondrex Inc.) at different time points. Data represent the median (+/- interquartile range) of five samples per group and is shown as: (A) total protein (control vs. POP-post:  $p = 0.0486$ ), (B) collagen content, and (C) box plots of the percentage (%) of collagen content per total protein (control vs. POP-post at week 3,  $p = 0.0327$ ; at week 4,  $p = 0.0400$ ; and week 5,  $p = 0.0089$ ). Differences between control and POP-post were identified by Kruskal-Wallis test followed by Dunn's multiple comparison: \*  $p < 0.05$  and \*\*  $p < 0.01$ .



**Figure 2. Collagen type I fibres and cell nuclei were aligned in one preferential direction in control and premenopausal POP groups but not in the postmenopausal POP group.** Representative immunohistochemistry micrographs of collagen I (green) and cells nuclei (blue) in deposited matrices after five weeks of culture of cells derived from (A) control, (B) prolapsed premenopausal (POP-pre), and (C) prolapsed postmenopausal (POP-post). The figure depicts the maximum intensity projection from z-stacks (top panel) and their corresponding fiber orientation (bottom panel). Images were acquired with 63x objective of a Leica microscope. The bar is 50µm.



**Figure 3. Proliferation of anterior vaginal wall fibroblastic cells was not affected by POP or menopausal status *in vitro*.** The total DNA of fibroblastic cells was measured by CyQuant at different time points. The cells were derived from prolapsed tissues from premenopausal (POP-pre) and postmenopausal (POP-post) women, as well as from controls. The box plots correspond to five samples per group per time point. \*\*  $p < 0.01$  by Kruskal-Wallis test followed by Dunn's multiple comparison compared to week 0. Week 0 vs. week 4: control,  $p = 0.0019$ ; POP-pre,  $p = 0.0069$ ; POP-post,  $p = 0.0011$ . Week 0 vs. week 5: control,  $p = 0.0019$ ; POP-pre,  $p = 0.0031$ ; POP-post,  $p = 0.0031$ . No differences were found between the study groups.



**Figure 4. Vaginal fibroblastic cells secreted and activated matrix metalloproteinases-2 in long term cultures *in vitro*.** Conditioned media of fibroblastic cells from prolapsed premenopausal (POP-pre) (B) and postmenopausal (POP-post) (C) tissues was evaluated at different time points and compared to controls (A). Matrix metalloproteinase (MMP)-2 was detected by zymography, blots were quantified and data was normalised to total DNA. The box plots correspond to five samples per group per time point. \*  $p < 0.05$  by Kruskal-Wallis test followed by Dunn’s multiple comparison. Week 3 vs. week 4: control,  $p = 0.0116$ ; and POP-post,  $p = 0.0234$ . No differences were found between the study groups.

**Table 2. Surface micro-stiffness: effective Young modulus (kPa)**

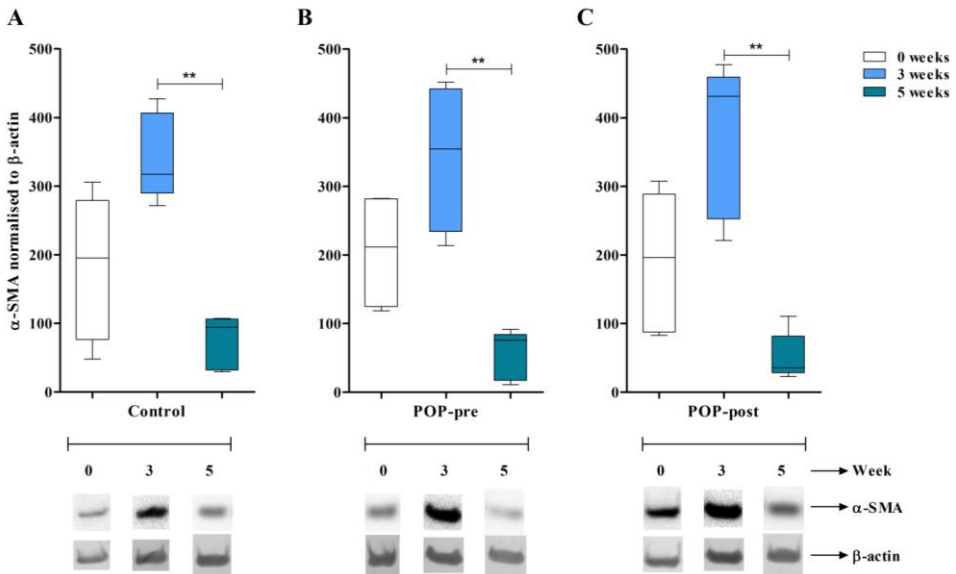
Sample treatment	A Control (n = 5)	B POP pre (n = 5)	C POP post (n = 5)	A-B p-value	A-C p-value	B-C p-value
Fresh	16 (14.9 – 29.4)	26 (19.1 – 100.5)	50 (25.7 – 86.3)	0.3095	0.0317	0.5476
Fixated	68 (60.6 – 79.5)	178 (105.8 – 538.8)	220 (153.1 – 756.9)	0.1580	0.0079	0.6905
p-value	0.0079	0.0159	0.0079			

Data is presented as: median (IQR). Non-parametric statistical tests: Mann-Whitney

**Table 3. Biochemical analysis of collagen cross-links hydroxylysylpyridinoline (HP) and lysylpyridinoline (LP)**

	Control (n = 5)	POP pre (n = 5)	POP post (n = 5)
(HP + LP)/triple helix	0.09 (0.08-0.25)	0.09 (0.04-0.10)	0.10 (0.10-0.12)

Data is presented as: median (IQR). Non-parametric statistical tests: Mann-Whitney.



**Figure 5. Vaginal fibroblasts show transient differentiation to myofibroblasts *in vitro*.** Cell lysates were collected at different time points (0, 3 and 5 weeks) and myofibroblast differentiation was detected by western immunoblotting of  $\alpha$ -smooth muscle actin ( $\alpha$ -SMA) and  $\beta$ -actin was used as a control. Cells originated from three groups: (A) controls, (B) prolapsed premenopausal (POP-pre), and (C) prolapsed postmenopausal (POP-post). Blots were quantified by densitometry analysis of the bands and data was normalised to the first band of  $\beta$ -actin per blot. The box plots correspond to five samples per time point per group. \*\*  $p < 0.01$  by Kruskal-Wallis test followed by Dunn's multiple comparison. Week 3 vs. week 4: control,  $p = 0.0056$ ; POP-pre,  $p = 0.0066$ ; POP-post,  $p = 0.0044$ . No differences were found between the study groups.

## DISCUSSION

Clinical studies have shown that in patients with cystocele, the prolapsed tissues have increased stiffness<sup>16,18-20</sup>, altered extracellular matrix composition<sup>8-17</sup>, and fibroblastic cells with lower contractile capacities<sup>21-23</sup> and altered mechano-responses<sup>23,24</sup>. These changes seem to be an acquired defect for most women with prolapse but the mechanisms behind these conditions are still unclear. Cells are responsible for tissue maintenance and remodelling. If matrix production is altered in prolapsed tissues, treatment outcomes could be improved by understanding the mechanisms behind the altered cell-matrix interactions. We hypothesize that the affected cells from prolapsed anterior vaginal wall tissues have altered matrix production. Therefore we evaluated *in vitro* matrix production of cells derived from the anterior vaginal wall tissues from women with and without POP. Since most women with prolapse are postmenopausal, we further included pre- and postmenopausal women in the POP group.

Our study has shown that cells from prolapsed anterior vaginal wall tissues produce different extracellular matrices *in vitro* than cells derived from control tissues. The

matrices deposited by cells from postmenopausal tissues were stiffer, with a high percentage of collagen and with collagen I fibres with more than one preferred orientation. These data suggest that matrix production changed after cells had been exposed to prolapse and that the altered matrix production was more apparent in postmenopausal women. The affected fibroblastic cells from prolapsed tissues seem to have changed in such a way that their matrix production was altered even after being extracted from their native microenvironment and grown *in vitro* for several passages. We also found no differences in the number of cells between the groups, thus confirming our previous observations and suggesting that the quality, and not the quantity, of the cells is responsible for the results<sup>23</sup>.

The increased stiffness that we found in the POP matrices is likely to be a consequence of the high percentage of collagen present and the structural difference found in the collagen I fibres. Matrix production from vaginal cells derived from prolapsed tissues was lower than those from controls, but with a high percentage of collagen fibres. The same trend was seen in matrices from premenopausal women with POP suggesting that the premenopausal status seems to ameliorate, and not reverse the adverse cellular defects in prolapsed tissues. The collagen I fibres found in the deposited matrices had anisotropic orientation that seems to be an intrinsic ordering principle since no external forces were applied to the system and there were no physical constraining boundaries. This self-organization might be due to the spontaneous self-organization of high density of collagen, to the cells' producing and arranging the fibres within the matrix or a combination of both<sup>27</sup>. The fact that the stiffer matrices derived from postmenopausal prolapsed cells appeared to have collagen I fibres with two anisotropically oriented layers, remains intriguing.

In our *in vitro* experiments collagen content and fiber alignment have a greater influence on the surface stiffness of the matrices deposited than to the amount of collagen cross-links which have a big influence on the mechanical properties of tissues<sup>27</sup>. Indeed it has been reported that tissues from women with POP have increased collagen cross-links compared to non-POP tissues<sup>9,17</sup>. The values of the mature cross-links that we found in our matrices were below the values that have been reported in tissues<sup>17</sup>, indicating that the formation of mature collagen cross-links in our *in vitro* experiments was still premature. It is also important to note that the formation of mature collagen cross-links might be different *in vivo* from *in vitro*.

During wound tissue repair, fibroblasts are recruited to the site of injury and start to proliferate. They also secrete granular tissue and can differentiate into myofibroblasts. When myofibroblasts appear, the remodelling phase starts and the granular tissue is replaced by a scar tissue rich in collagen I<sup>30</sup>. In this study we used primary fibroblastic cells, *i.e.* fibroblasts and myofibroblasts. Fibroblasts can differentiate into myofibroblasts due to various stimuli including mechanical tension<sup>28</sup> and matrix stiffness<sup>29</sup>. When cells produce the proper matrix, tension in their microenvironment can be released and myofibroblasts should disappear either due to apoptosis or to their dedifferentiation back into fibroblasts<sup>28</sup>. If the mechanical tension of the microenvironment is not released,

myofibroblasts might not disappear, making stiffer matrices and causing a continuous imbalance in tissue remodelling<sup>28,31</sup>. In our experiments we found a transient myofibroblast differentiation with peak expression of the cellular myofibroblast marker  $\alpha$ -smooth muscle actin ( $\alpha$ -SMA) at week three that coincided with the peak of matrix deposition and with the peak of secretion and activation of matrix metalloproteinase-2 (MMP-2). The peak of activation of MMP-2 found in cells from the controls and from the postmenopausal POP group was not evident in cells from premenopausal POP women, even though the maximum matrix deposition and myofibroblast differentiation was still found at week three. Therefore, we speculate that the peak of MMP-2 activation of cells from premenopausal POP women occurred before week three, but this should be further confirmed. Regardless this variation, it is reasonable to say that the peak of remodelling occurred at week three. These results are in line with normal tissue repair process where myofibroblasts secrete the new matrix, and also MMPs and tissue inhibitor of matrix metalloproteinases (TIMPs) to remodel the granulose tissue<sup>30</sup>. However, no differences were found between the study groups, and myofibroblasts seemed to disappear after the peak in matrix remodelling. Therefore, the altered matrix production does not seem to be a consequence of abnormal phenotypical changes towards the myofibroblastic lineage. Results from us and from others suggest that the fibroblastic cells are affected as they show lower contractile capacities<sup>21-23</sup>, lower matrix production, and lower responses to transforming growth factor- $\beta$  (TGF- $\beta$ )<sup>32</sup>. TGF- $\beta$  is a recognized activator of myofibroblast differentiation. Recently Sun *et al.* suggested that vaginal fibroblasts from prolapsed premenopausal and postmenopausal tissues seem to be less responsive to TGF- $\beta$ , as this growth factor did not increase proliferation as it did in the control group, suggesting that vaginal fibroblasts from prolapsed tissues acquire a defect in the TGF- $\beta$  signalling pathway that can contribute to the progression of POP<sup>32</sup>. These results were independent of menopausal status supporting our perception that the premenopausal status seems to ameliorate but not reverse the adverse cellular defects in prolapsed tissues.

It has been hypothesised that the weakening of the prolapsed tissues is a consequence of the increased enzymatic activity, particularly of MMP-2 and MMP-9<sup>9-11</sup>. In our *in vitro* experiments we did not find an increase of MMP-2 enzymatic activity in fibroblastic prolapsed cells compared to controls. There are several possible explanations for the discrepancies between *in vivo* and *in vitro* observations of MMP activity: (i) other cells are responsible for the excessive *in vivo* enzymatic activity, (ii) mechanical loading induces MMP secretion and activation<sup>23,24,33</sup> (our *in vitro* model was under static conditions), (iii) the differences occurred at time points other than the studied times, (iv) the experiments were performed on substrates which are different to the native microenvironments.

In this study we showed that fixating samples with formaldehyde increased the surface micro-stiffness of the fibroblast derived matrices by a factor of at least 4. The increased stiffness reported in prolapsed tissues compared to controls had been tested in fresh samples<sup>18-19</sup>. However, some measurements of non-prolapsed pelvic floor tissues have



been performed on fixated samples from elderly cadavers and the data has been used to develop mathematical models to study pelvic floor biomechanics during pregnancy and delivery<sup>34-36</sup>. In the future, caution should be taken when defining the biomechanical properties of different pelvic tissues for the general female population and only use fresh samples.

In summary, affected fibroblasts from postmenopausal prolapsed tissues produced altered matrices *in vitro* compared to controls. Similarly to normal wound repair, there was a transient increase in myofibroblastic phenotype that was lost after the peak of tissue remodelling. The altered matrix production in prolapsed tissues does not appear to be a consequence of abnormal phenotypical changes towards the myofibroblastic lineage.

#### ACKNOWLEDGEMENTS

The authors would like to thank Prof. Jan-Paul Roovers and Prof. Hans A.M. Brölmann for kindly providing tissue biopsies, Jessica Snabel and Koen van der Laan for technical assistance, and Alan Brind for proof reading the manuscript. A.M. Ruiz-Zapata acknowledges financial support from a grant from the Dutch government to the Netherlands Institute for Regenerative Medicine (NIRM, grant No. FES0908), and S. Ghazanfari acknowledges financial support from a ZonMW-VICI grant 918.11.635 (The Netherlands).

#### REFERENCES

- Hendrix, S.L., Clark, A., Nygaard, I., Aragaki, A., Barnabei, V. & Mc Tiernan, A. Pelvic organ prolapse in women's health initiative: gravity and gravidity. *Am. J. Obstet. Gynecol.* **186**, 1160-1166 (2002).
- Jelovsek, J.E., Maher, C. & Barber, M.D. Pelvic organ prolapse. *Lancet* **396**, 1027-1038 (2007).
- Lensen, E.J.M., Withagen, M.I.J., Kluivers, K.B., Milani, A.L. & Vierhout M.E. Surgical treatment of pelvic organ prolapse: a historical review with emphasis on the anterior compartment. *Int. Urogynecol. J.* **24**, 1593-1602 (2013).
- Cartwright, R. *et al.* Systematic review and metaanalysis of genetic association studies of urinary symptoms and prolapse in women. *Am. J. Obstet. Gynecol.* **212**, 199.e1-199.e24 (2015).
- Ashton-Miller, J.A. & DeLancey, J.O. On the biomechanics of vaginal birth and common sequelae. *Annu. Rev. Biomed. Eng.* **11**, 163-176 (2009).
- Abramowitch, S., Feola, A., Jallah, Z. & Moalli, P.A. Tissue mechanics, animal models, and pelvic organ prolapse: a review. *Eur. J. Obstet. Gynecol. Reprod. Biol.* **144**, Suppl 1:S146-58 (2009).
- Alperin, M. & Moalli, P.A. Remodeling of vaginal connective tissue in patients with prolapse. *Curr. Opin. Obstet. Gynecol.* **18**, 544-550 (2006).
- Badiu, W., Granier, G., Bousquet, P.J., Monrozies, X., Mares, P. & de Tayrac, R. Comparative histological analysis of anterior vaginal wall in women with pelvic organ prolapse or control subjects. A pilot study. *Int. Urogynecol. J. Pelvic Floor Dysfunct.* **19**, 723-729 (2008).
- Jackson, S.R., Avery, N.C., Tarlton, J.F., Eckford, S.D., Abrams, P. & Bailey A.J. Changes in metabolism of collagen in genitourinary prolapse. *Lancet* **347**, 1658-1661 (1996).
- Moalli, P.A., Shand, S.H., Zyczynski, H.M., Gordy, S.C. & Meyn, L.A. Remodeling of vaginal connective tissue in patients with prolapse. *Obstet. Gynecol.* **106**, 953-963 (2005).
- Dviri, M., Leron, E., Dreier, J., Mazor, M. & Shaco-Levy, R. Increased matrix metalloproteinases-1,-9 in the uterosacral ligaments and vaginal tissue from women with pelvic organ prolapse. *Eur. J. Obstet. Gynecol. Reprod. Biol.* **156**, 113-117 (2011).
- Zong, W., Stein, S.E., Stracher, B., Meyn, L.A. & Moalli, P.A. Alteration of vaginal elastin metabolism in women with pelvic organ prolapse. *Obstet. Gynecol.* **115**, 953-961 (2010).
- de Landsheere, L. *et al.* Changes in elastin density in different locations of the vaginal wall in women with pelvic organ prolapse. *Int. Urogynecol. J.* **25**, 1673-1681 (2014).
- Lin, S.Y., Tee, Y.T., Ng S.C., Chang, H., Lin, P. & Chen, G.D. Changes in the extracellular matrix in the anterior vagina of women with or without prolapse. *Int. Urogynecol. J. Pelvic Floor Dysfunct.* **18**, 43-48 (2007).

15. Moiser, E., Lin, V.K. & Zimmern, P. Extracellular matrix expression of human prolapsed vaginal wall. *Neurorol. Urodyn.* **29**, 582-586 (2010).
16. Zhou, L. *et al.* Biomechanical properties and associated collagen composition in vaginal tissue of women with pelvic organ prolapse. *J. Urol.* **188**, 875-880 (2012).
17. Kerkhof, M.H. *et al.* Changes in tissue composition of the vaginal wall of premenopausal women with prolapse. *Am. J. Obstet. Gynecol.* **210**, 168.e1-9 (2014).
18. Jean-Charles, C., Rubod, C., Brieu, M., Boukerrou, M., Fasel, J. & Cosson, M. Biomechanical properties of prolapsed or non-prolapsed vaginal tissue: impact on genital prolapse surgery. *Int. Urogynecol. J.* **21**, 1535–1538 (2010).
19. Feola, A., Duerr, R., Moalli, P., & Abramowitch, S. Changes in the rheological behavior of the vagina in women with pelvic organ prolapse. *Int. Urogynecol. J.* **24**, 1221-1227 (2012).
20. Martins, P. *et al.* Biomechanical properties of vaginal tissue in women with pelvic organ prolapse. *Gynecol. Obstet. Invest.* **75**, 85–92 (2013).
21. Poncet, S., Meyer, S., Richard, C., Aubert, J.D. & Juillerat-Jeanneret, L. The expression and function of the endothelin system in contractile properties of vaginal myofibroblasts of women with uterovaginal prolapse. *Am. J. Obstet. Gynecol.* **192**, 426–432 (2005).
22. Meyer, S., Achtari, C., Hohlfeld, P. & Juillerat-Jeanneret, L. The contractile properties of vaginal myofibroblasts: is the myofibroblasts contraction force test a valuable indication of future prolapse development? *Int. Urogynecol. J. Pelvic Floor Dysfunct.* **19**, 1399–1403 (2008).
23. Ruiz-Zapata, A.M., Kerkhof, M.H., Zandieh-Doulabi, B., Brölmann, H.A., Smit, T.H. & Helder, M.N. Functional characteristics of vaginal fibroblastic cells from premenopausal women with pelvic organ prolapse. *Mol. Hum. Reprod.* **20**, 1135-1143 (2014).
24. Ruiz-Zapata, A.M., Kerkhof, M.H., Zandieh-Doulabi, B., Brölmann, H.A., Smit, T.H. & Helder, M.N. Fibroblasts from women with pelvic organ prolapse show differential mechanoresponses depending on surface substrates. *Int. Urogynecol. J.* **24**, 1567-1575 (2013).
25. Chavan, D., Andres, D. & Iannuzzi, D. Note: ferrule-top atomic force microscope. II. Imaging in tapping mode and at low temperature. *Rev. Sci. Instrum.* **82**, 046107 (2011).
26. Chavan, D. *et al.* Ferrule-top nanoindenter: an optomechanical fiber sensor for nanoindentation. *Rev. Sci. Instrum.* **83**, 115110 (2012).
27. Fratzl, P. *Collagen: Structure and Mechanics* [Springer Science & Business Media (ed.)][1-105] (Springer, New York, 2008).
28. Tomasek, J.J., Gabbiani, G., Hinz, B., Chaponnier, C. & Brown, R.A. Myofibroblasts and mechano-regulation of connective tissue remodeling. *Nat. Rev. Mol. Cell Biol.* **3**, 349-363 (2002).
29. Blaauboer, M.E, Smit, T.H, Hanemaaijer, R, Stoop, R. & Everts, V. Cyclic mechanical stretch reduces myofibroblast differentiation of primary lung fibroblasts. *Biochem. Biophys. Res. Commun.* **404**, 23-27 (2011).
30. Vedrenne, N., Coulomb, B., Danigo, A., Bonté, F. & Desmoulière, A. The complex dialogue between (myo)fibroblasts and the extracellular matrix during skin repair processes and ageing. *Pathol. Biol. (Paris)*. **60**, 20-27 (2012).
31. Blaauboer, M.E. *et al.* Extracellular matrix proteins: a positive feedback loop in lung fibrosis? *Matrix Biol.* **34**,170-178 (2014).
32. Sun, B., Zhou, L., Wen, Y., Wan, C., Baer, T.M., Pera, R.R. & Chen, B. Proliferative behaviour of vaginal fibroblasts from women with pelvic organ prolapse. *Eur. J. Obstet. Gynecol. Reprod. Biol.* **183**, 1-4 (2014).
33. Zong, W., Jallah, Z.C., Stein, S.E., Abramowitch, S.D. & Moalli, P.A. Repetitive mechanical stretch increases extracellular collagenase activity in vaginal fibroblasts. *Female Pelvic Med. Reconstr. Surg.* **16**, 257–262 (2010).
34. Janda, S, van der Helm, F.C & de Blok, S.B. Measuring morphological parameters of the pelvic floor for finite element modelling purposes. *J. Biomech.* **36**, 749-757 (2003).
35. Martins, J.A, Pato, M.P, Pires, E.B, Jorge, R.M, Parente, M. & Mascarenhas, T. Finite element studies of the deformation of the pelvic floor. *Ann. N.Y. Acad. Sci.* 1101, 316-334 (2007).
36. Parente, M.P, Natal Jorge, R.M, Mascarenhas, T., Fernandes, A.A. & Martins, J.A. The influence of the material properties on the biomechanical behaviour of the pelvic floor muscles during vaginal delivery. *J. Biomech.* **42**, 1301-1306 (2009).