

# VU Research Portal

## Neuroimaging in subjective cognitive decline

Verfaillie, S.C.J.

2018

### **document version**

Publisher's PDF, also known as Version of record

[Link to publication in VU Research Portal](#)

### **citation for published version (APA)**

Verfaillie, S. C. J. (2018). *Neuroimaging in subjective cognitive decline: Incipient Alzheimer's Disease unmasked*.

### **General rights**

Copyright and moral rights for the publications made accessible in the public portal are retained by the authors and/or other copyright owners and it is a condition of accessing publications that users recognise and abide by the legal requirements associated with these rights.

- Users may download and print one copy of any publication from the public portal for the purpose of private study or research.
- You may not further distribute the material or use it for any profit-making activity or commercial gain
- You may freely distribute the URL identifying the publication in the public portal ?

### **Take down policy**

If you believe that this document breaches copyright please contact us providing details, and we will remove access to the work immediately and investigate your claim.

### **E-mail address:**

[vuresearchportal.ub@vu.nl](mailto:vuresearchportal.ub@vu.nl)

# CHAPTER 3

## **THINNER TEMPORAL AND PARIETAL CORTEX IS RELATED TO INCIDENT CLINICAL PROGRESSION TO DEMENTIA IN PATIENTS WITH SUBJECTIVE COGNITIVE DECLINE**

S.C.J. Verfaillie, B. Tijms, A. Versteeg, M.R. Benedictus, F.H. Bouwman, P. Scheltens, F. Barkhof, H. Vrenken & W.M. van der Flier

Published in: *Alzheimer's & Dementia: Diagnosis, Assessment & Disease Monitoring* (2016 Nov 19;5:43-52 doi: 10.1016/j.dadm.2016.10.007. eCollection 2016.)

*"Thoughts without content are empty, intuitions without concepts are blind" (I. Kant)*

## ABSTRACT

**Introduction.** We aimed to investigate if thinner cortex of the AD-signature region was related to clinical progression in subjective cognitive decline (SCD).

**Methods.** We included 302 SCD patients with clinical follow-up ( $\geq 1$  year) and three-dimensional T1-MRI. We estimated AD-signature cortical thickness, consisting of 9 frontal, parietal and temporal gyri, and hippocampal volume. We used Cox proportional hazard models (hazard ratios [HR] and 95% confidence intervals [CI]) to evaluate cortical thickness in relation to clinical progression to MCI or dementia.

**Results.** After a follow-up of  $m(sd)$  3(2) years, 49 (16%) patients showed clinical progression to MCI ( $n=32$ ), AD ( $n=9$ ) or non-AD dementia ( $n=8$ ). Hippocampal volumes, thinner cortex of the AD-signature (HR [95% CI]: 5 [2-17]) and various AD-signature subcomponents were associated with increased risk of clinical progression. Stratified analyses showed that thinner AD-signature cortex was specifically predictive for clinical progression to dementia, but not to MCI.

**Discussion.** In SCD patients thinner cortex is associated with clinical progression to dementia.

## INTRODUCTION

Alzheimer's disease (AD) is a progressive neurodegenerative disorder characterized by behavioral changes and gradual decline of cognitive function and daily functioning.<sup>1</sup> Atrophy, particularly of the medial temporal lobe, is the MRI hallmark of dementia due to AD.<sup>2,3</sup> It has been suggested that a specific pattern of regional atrophy in the temporal, parietal, and frontal gyri, which has been coined the cortical AD-signature, shows changes very early in the disease process.<sup>4,5</sup> Moreover, cortical thinning has been suggested to be present as early as a decade before diagnosis.<sup>6</sup>

Memory clinic patients who present with subjective cognitive decline (SCD) are at a threefold increased risk of clinical progression to dementia.<sup>7-11</sup> In an effort to explore the earliest signs of AD, a framework has been proposed that provides a common concept and terminology for studying subjective experience of cognitive decline.<sup>12</sup>

Memory clinic based studies have demonstrated decreased gray matter volumes<sup>13-15</sup> and cortical thinning<sup>16</sup> in medial temporal regions in SCD compared to healthy controls. It is still unclear however, whether such smaller brain structures are related to clinical progression over time in SCD patients. Therefore, we investigated whether baseline cortical thickness is related to incident clinical progression in patients with SCD in a tertiary referral center. More specifically, if thinner cortex of the AD-signature in cognitively intact patients with self-perceived memory complaints is associated with increased risk of progression to MCI or dementia over time.

## METHODS

**Study population.** We included 302 SCD patients from the Amsterdam Dementia Cohort<sup>17,18</sup> according to the following inclusion criteria: availability of brain MRI and clinical follow-up ( $\geq 1$  year). Patients were referred by a general practitioner or local hospital (according to Dutch healthcare system regulations) and subsequently visited our memory clinic between 2000 and 2012. At baseline, all patients underwent a standardized dementia screening, including extensive neuropsychological assessment, physical and neurologic examination as well as laboratory tests and brain MRI. Patients were labeled as having SCD when they presented with cognitive complaints, and results of clinical assessments were within normal range. Patients were excluded if criteria for MCI, dementia, or any other neurological or major psychiatric (e.g. major depression) disorders known to cause cognitive complaints were met (at baseline) during a multidisciplinary consensus meeting according to international research consensus criteria.<sup>12</sup> In addition, we offered patients a lumbar puncture for research purposes. We determined Beta-amyloid1-42 and total tau in cerebrospinal fluid using sandwich enzyme-linked immunoassays (ELISAs Innogenetics, Belgium).<sup>19,20</sup>

**Table 1. Demographic and clinical data**

	SCD stable (n=253)	SCD progression (n=49)	p-value
Male/female (%male)	136/117 (54%)	27/22 (55%)	p=0.64
Age (years)	61 (9)	69 (6)	p<0.01
Education (range 1-7) <sup>2</sup>	5 (1)	5 (1)	p=0.32
Scanner system (1T/3T)	151/102	31/ 18	p=0.84
<u>Clinical</u>			
Cardiovascular risk factors			
Smoking, current (n (%) yes)	30 (12%)	5 (9%)	p=0.81
Diabetes (n (%) yes)	23 (9%)	3 (6%)	p=0.41
Hypertension (n (%) yes)	52 (20%)	15 (30%)	p=0.13
Blood pressure (systolic/diastolic mmHg)	139/84	147/84	p=0.37 / p=0.87
Family history cardio vascular disease (n (%) yes)	81 (32%)	15 (31%)	p=0.38
Family history dementia (n (%) yes)	100 (39%)	22 (45%)	p=0.06
MMSE	28 (2)	28.0 (2)	p=0.10
APOE-ε4 positive <sup>1</sup>	80 (37%)	22 (53%)	p=0.05
Follow-up time	3 (2)	4 (3)	p=0.12
Diagnosis at progression	n.a.	aMCI n=25 (51%) mMCI n=5 (10%) naMCI n=2 (4%) Probable AD n=9 (18%) bvFTD n=3 (6%) VaD n=4 (8%) PPA n=1 (2%)	
CSF Beta-amyloid1-42 <sup>3</sup>	857 (237)	705 (303)	p<0.01
CSF total tau <sup>3</sup>	268 (146)	448 (258)	p<0.001
Preclinical AD <sup>4</sup>	Stage 0 (%) n=114 (64%)	n=8 (29%)	p<0.001
	Stage I (%) n=20 (12%)	n=4 (14%)	p=0.44
	Stage II (%) n=12 (7%)	n=10 (36%)	p<0.01
	SNAP (%) n=31 (18%)	n=6 (21%)	p=0.34

Data are presented as n (%) or mean (sd). Comparisons between groups were made with analyses of variance (ANOVA) for continuous variables and  $\chi^2$  tests for discrete variables. Abbreviations. AD, Alzheimer's disease; aMCI, amnesic MCI; bvFTD, behavioral FTD; MCI, mild cognitive impairment; MMSE, mini mental state examination; mMCI, multi-domain MCI; n.a., not applicable; naMCI, non-amnesic MCI; PPA, primary progressive aphasia; SCD, subjective cognitive decline; S.D., Standard Deviation; SNAP, suspected non-Alzheimer's pathophysiology; VaD, Vascular Dementia; <sup>1</sup>, 14% missing data; <sup>2</sup>According to Verhage classification; <sup>3</sup>, 32% missing data; <sup>4</sup>, according to National Institute on Aging-Alzheimer's Association (NIA-AA) preclinical AD stages (2012). An AD biomarker profile was defined based on the following cut-offs A $\beta$ 42: 640, and tau: 375 ng/L.

Follow-up took place by annual visits to our memory clinic in which medical history, neuropsychological assessment, and general physical and neurological examination were repeated. The primary outcome in this study was clinical progression, which was defined as progression to MCI, AD or another type of dementia as diagnosed at follow up by an interdisciplinary consensus meeting based on international diagnostic or research consensus criteria.<sup>21-26</sup> In this study, for subjects who progressed to MCI, we further determined the MCI subtype (amnestic, multi-domain, non-amnestic) based upon the neuropsychological evaluation at the time of clinical progression. Our neuropsychological test battery included tests that measured cognitive functioning in the domains of memory, attention, executive functioning and language.<sup>17</sup> For the memory domain, we used: the Dutch version of the RAVLT direct and delayed recall, visual association task (VAT) A. For attention we used: digit span forward, TMT-A, Stroop1&2. For the executive function domain, we used: TMT-B, digit span backwards, Stroop colour-word test. For the language domain, we used: Category fluency animals, VAT naming. The medical ethics committee of the VU University Medical Center approved the study. All patients provided written informed consent for their clinical data to be used for research purposes.

**MRI acquisition.** Structural MRI was performed at the first visit to the memory clinic using 1.0T (n=182) Siemens Magnetom Impact (Siemens, Erlangen, Germany) and 3.0T (n=120) Signa HDxt (General Electric, Milwaukee, WI) scanners. For cortical thickness estimations, 3D T1-weighted images were acquired using the following sequences: MPRAGE on 1.0T (168 slices, matrix= 256x256, voxel size= 1x1x1.5 mm<sup>3</sup>, echo time (TE)= 7ms, repetition time (TR)=15ms, inversion time (TI)= 300ms, flip angle, 15°), and IR-FSPGR on 3.0T (176 slices, matrix= 256x256, 1x0.9x0.9 mm<sup>3</sup>, TE=3ms, TR=7.8ms, TI=450ms, flip angle 12°). In addition, the scan protocol included T2-weighted images and FLAIR. A standard circular head coil was used. Motion was restricted using expandable foam cushions. Scans with movement, or any other image (reconstruction) artefacts were excluded (1.0T, n=5; 3.0T, n=7). T1-weighted images acquired on 3.0T were corrected for gradient non-linearity in all three directions.

**Image analysis.** Freesurfer (v5.3, Harvard, MA, USA) was used to analyze cortical thickness (<https://surfer.nmr.mgh.harvard.edu>) in 3D-T1-weighted images. Briefly, Freesurfer constructs models of the boundaries between gray and white matter as well as pial surface to estimate cortical thickness. The distance between these surfaces gives the vertex-wise cortical thickness of cortical areas (i.e. the perpendicular thickness at each location). Automated cortical parcellations were run using a default script template (recon-all),<sup>27,28</sup> providing 34 cortical estimations per hemisphere (Killiany/Desikan atlas based).<sup>28</sup> The output was visually inspected for segmentation errors. We evaluated whole-brain cortical thickness, and cortical thickness in the AD-signature region, which consists of nine bilateral regions: angular, precuneus, supramarginal, superior frontal, superior parietal, temporal pole, inferior temporal, medial temporal and inferior frontal cortex.<sup>4,5</sup>

Subsequently, we performed vertex-wise analyses. Firstly, preprocessing using default settings (mris\_preproc) was performed. Optimized Gaussian smoothing kernel was used for detecting focal abnormalities.<sup>29</sup> Next, group main effects were investigated in the context of a general linear model using a default design (DODS), for visualization purposes it was thresholded on sig>2.00 uncorrected. Analyses were adjusted for age, gender, scanner type (Nclasses=2, Nvariables=3). Significant brain region positions were described according to RAS coordinate system with corresponding significance on log-scale. In addition, hippocampal volumes were estimated using FIRST (FMRIB software library v5, Oxford, UK). The FIRST algorithm consists of a two-stage linear registration to achieve a robust and accurate alignment of subcortical volumes. Firstly, it applies a registration between the 3DT1 images and the Montreal Neurological Institute 152 template. Secondly, using a subcortical mask, segmentation was done based on shape models and voxel intensities to obtain hippocampal volumes (normalized for head size using SIENAX) for further statistical analyses. All registrations were visually inspected for errors.<sup>30</sup>

**Table 2. Cortical thickness of SCD patients with and without clinical progression**

Cortical Thickness (in mm)	SCD Stable	SCD progression to MCI / Dementia	SCD progression to MCI	SCD progression to AD	SCD progression to Non-AD
	(n=253)	(n=49)	(n=32)	(n=9)	(n=8)
Whole-brain	2.17 (0.31)	2.04 (0.37)	2.15 (0.30) <sup>b</sup>	1.84 (0.27)	1.80 (0.48) <sup>a</sup>
AD-signature	2.39 (0.34)	2.21 (0.39)	2.34 (0.35)	1.96 (0.31)	2.05 (0.41)
Angular gyrus	2.06 (0.35)	1.93 (0.37)	2.04 (0.34)	2.04 (0.36)	1.72 (0.37)
Precuneus	1.95 (0.36)	1.81 (0.39)	1.98 (0.35) <sup>b</sup>	1.89 (0.30)	1.70 (0.39) <sup>a</sup>
Supramarginal	2.22 (0.32)	2.10 (0.35)	2.19 (0.33)	1.83 (0.33)	1.93 (0.35)
Frontal superior	2.34 (0.37)	2.20 (0.40)	2.30 (0.37)	1.94 (0.36)	2.00 (0.40)
Parietal superior	1.80 (0.32)	1.71 (0.40)	1.85 (0.30) <sup>b</sup>	1.71 (0.21)	1.60 (0.40) <sup>a</sup>
Temporal pole	3.38 (0.60)	3.06 (0.65)	3.24 (0.59)	2.44 (0.59)	2.97 (0.65)
Temporal inferior	2.62 (0.32)	2.44 (0.35)	2.54 (0.30)	2.13 (0.36)	2.29 (0.35)
Medial Temporal	2.85 (0.42)	2.56 (0.47) <sup>a</sup>	2.69 (0.44)	2.16 (0.46)	2.44 (0.47)
Frontal inferior	2.34 (0.29)	2.21 (0.32)	2.28 (0.30)	1.98 (0.32)	2.07 (0.32)
Hippocampus#	7.18 (0.91)	6.41 (0.92) <sup>a</sup>	6.73 (0.97)	5.99 (0.92)	6.84 (0.85)

Data are presented as mean (sd). Abbreviations. AD, Alzheimer’s disease; MCI, mild cognitive impairment; SCD, subjective cognitive decline; #, in mm<sup>3</sup> estimated with FIRST (FMRIB software library v5). ANOVAs were used to investigate cortical thickness between groups (SCD stable, MCI, AD and non-AD) with Bonferroni post-hoc tests (<sup>a</sup>, p<0.05 significantly different between SCD progression to MCI, AD or non-AD compared to SCD stable; <sup>b</sup>, significantly different between SCD progression to MCI and SCD progression to non-AD)

**Statistical analyses.** Statistical analyses were performed with SPSS version 20.0.0 (IBM Corp., Armonk New York, U.S.). Comparisons between stable versus progressive patients of baseline demographical and clinical characteristics were analyzed with analyses of variance (ANOVA) for continuous variables and  $\chi^2$  tests for discrete variables. Between group regional cortical thickness estimations were analyzed with ANOVA (covariates: age, sex and scanner) with Bonferroni-adjustment for multiple comparisons. Cox proportional-hazards models adjusted for age, gender, baseline MMSE score and scanner type were used to investigate the risk of incident clinical progression (outcome measure) associated with baseline cortical thickness (in millimeter) and hippocampal volumes ( $\text{mm}^3$ ). Estimations were inverted; thinner cortex represents therefore increased risk of clinical progression. Separate Cox proportional hazards models were performed for each cortical variable (continuous) as predictor (i.e., whole-brain cortical thickness, cortical thickness of the AD-signature, the nine AD-signature components, and hippocampal volumes). Subsequently, we evaluated the respective contributions of the nine individual AD-signature regions, and hippocampal volumes using a forward stepwise model. In addition, we performed an additional exploratory analysis, stratified for clinical outcome (i.e. MCI, AD, other dementia). Cortical thickness estimations are represented as mean (sd), while results on Cox proportional hazard models are presented as hazard ratio's (HR) with 95% confidence intervals (CI). For visualization purposes, we constructed Kaplan-Meier curves based on tertiles (low/medium/high cortical thickness).

## RESULTS

Demographic and clinical characteristics are presented in Table 1. There were 136 (54%) male SCD patients, with a mean (sd) age of 62 (10) years, and MMSE of 28 (2). Forty-nine (16%) patients showed incident clinical progression to MCI (n=32, 65%), dementia due to AD (n=9, 18%), or other dementia subtypes (vascular dementia n=4 (8%); behavioral variant frontotemporal dementia n=3 (6%); primary progressive aphasia n=1 (2%)). Of the patients who progressed to MCI, n=25 (79%) had an amnesic cognitive profile, n=5 (15%) multi-domain, and n=2 (6%) non-amnesic. SCD patients with clinical progression were older, and more often APOE- $\epsilon$ 4 positive than stable patients. MMSE baseline scores were comparable between patients with and without clinical progression. Duration of follow-up, sex, education level, cardiovascular risk factors, systolic and diastolic blood pressure, family history of AD and cerebrovascular disease were comparable between groups. Among those with available CSF data (68%), patients with clinical progression had lower CSF Beta-amyloid1-42, and higher tau than those who remained stable.

Cortical thickness estimations are presented in table 2. ANOVAs showed that SCD patients who showed clinical progression had a thinner medial temporal lobe and smaller



hippocampus than those who remained stable. Cox proportional hazards analyses showed that adjusted for age, gender, baseline MMSE score and scanner type, thinner cortical thickness of the AD-signature (HR [95% CI]: 5 [2-17]) and whole-brain (HR [95% CI]: 5 [2-15]) were associated with an increased risk of clinical progression (table 3; Figure 1A). If analyses were repeated with SCD patients older than age 60 (n=175, including n=44 with clinical progression), results did not change essentially (data not shown). When we analyzed the individual cortical regions in separate models, thinner angular, supramarginal, superior parietal, precuneus, superior frontal, temporal poles, medial temporal gyri, and hippocampal volumes were associated with increased risk of clinical progression (Figure 1B). When we additionally adjusted for APOE- $\epsilon$ 4 carrier status, results did not change essentially (data not shown). Subsequently, we ran a forward stepwise model, which identified that thinner medial temporal cortex (HR [95% CI]: 5 [2-11]) was most strongly associated with increased risk of clinical progression (supplementary table 1).

Subsequently, we explored the pattern of reduced cortical thickness using vertex-wise analyses. SCD patients who showed clinical progression had a thinner left anterior lingual cortex (coordinates: 21/-68/-28, sig=3), left supramarginal gyrus (-63/-35/34, sig=2), superior parietal (-16/-69/61, sig=3), precuneus (27/-76/28, sig=2.02), right parahippocampus (18/-32/-13, sig=2) and cuneus (-23/96/3, sig=2), middle frontal (-6/71/34, sig=2), and postcentral (-12/27/70, sig=2) (figure 2). In the right superior frontal cortex (12/68/14, sig=4), a small area seemed to be thicker in SCD patients who showed clinical progression in comparison to stable patients.

In an additional set of exploratory analyses, we stratified for clinical outcome (i.e., progression to MCI, AD or non-AD type of dementia). ANOVAs showed that SCD patients who progressed to non-AD dementia had thinner precuneus and superior parietal cortex compared to patients with stable SCD and SCD patients who progressed to MCI (table 2). Cortical thickness or hippocampal volume of SCD patients who progressed to MCI or AD dementia did not differ significantly from stable SCD patients. Cox proportional hazard models showed that for patients progressing to MCI, smaller hippocampal volumes were associated with clinical progression, whereas thinner medial temporal cortex was associated at trend level ( $p=0.06$ ) with clinical progression (table 3). None of the other AD-signature regions were associated with progression to MCI. For clinical progression to AD (n=9) and non-AD (n=8) thinner cortex of the AD-signature was predictive for clinical progression. Within the regions constituting the AD-signature the inferior temporal cortex and temporal poles were more predictive for progression to AD, whereas thickness of the angular gyrus and precuneus were more predictive for progression to non-AD (table 3).

**Table 3. Cortical thickness hazard ratios of SCD patients with progression to MCI, AD or non-AD dementia or progression to MCI/ dementia**

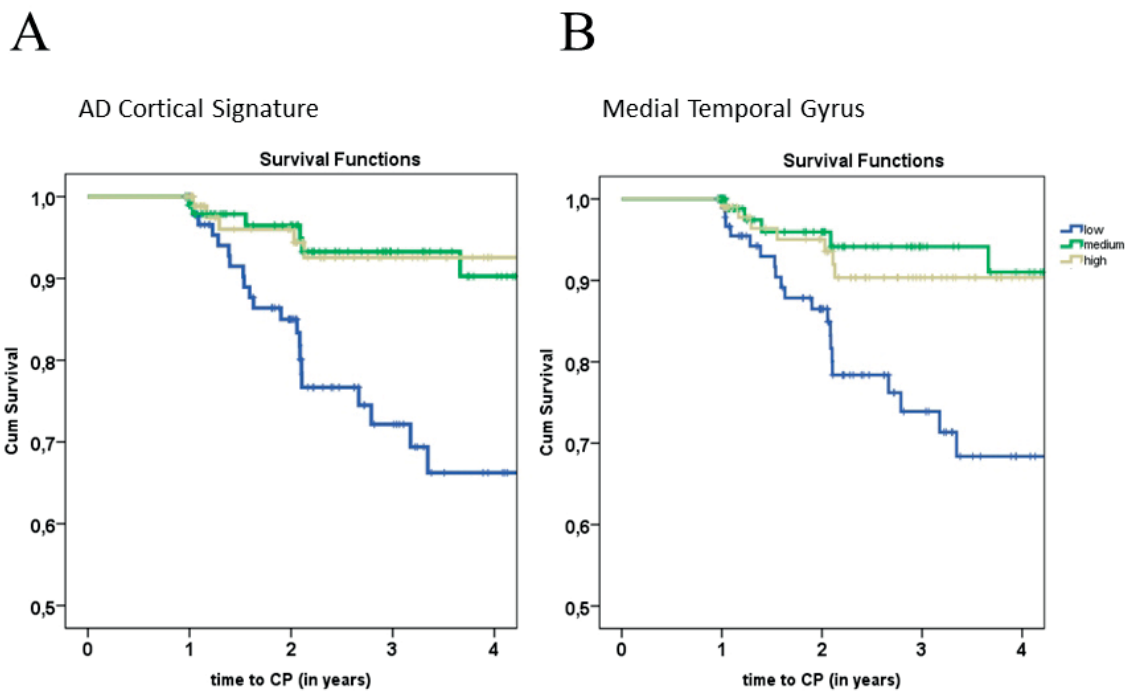
<b>AD-signature components</b>	<i>SCD progression to MCI/ dementia n=49</i>	<i>SCD progression to MCI n=32</i>	<i>SCD progression to AD n=9</i>	<i>SCD progression to non-AD n=8</i>
Whole-brain thickness	5 (2-15)*	1 (0-8)	8 (0-88)	14 (2-126)*
AD-signature	5 (2-17)*	2 (0-9)	18 (1-284)*	25 (1-433)*
Angular	6 (2-20)**	2 (0-9)	15 (1-303)	58 (2-2062)*
Supramarginal	4 (1-14)*	1 (0-7)	6 (1-278)*	29 (1-746)*
Parietal superior	7 (1-38)*	1 (0-6)	126 (1-14926)*	6225 (6-67700)*
Precuneus	7 (2-25)**	2 (0-12)	10 (1-170)	212 (4-11636)*
Frontal inferior	2 (0-5)	1 (0-6)	5 (0-61)	14 (1-231)
Frontal superior	3 (1-9)*	1 (0-6)	4 (0-44)	16 (1-213)*
Temporal poles	2 (1-4)*	1 (1-3)	6 (1-25)*	2 (1-9)
Temporal inferior	4 (1-12)	2 (0-6)	12 (1-133)*	14 (1-206)
Temporal medial	5 (2-11)*	3 (1-8)	14 (2-109)*	11 (1-96)*
Hippocampus	2 (1-2)*	2 (1-3)*	2 (1-4)*	1 (0-3)

Data are presented as hazard ratio's with accompanying 95% confidence intervals between brackets. AD, dementia due to Alzheimer's disease; MCI, mild cognitive impairment; non-AD, dementia due to other dementia; SCD, subjective cognitive decline, \*, p<0.05, \*\* p<0.01

## DISCUSSION

The main finding of the current study was that in patients with SCD, thinner temporal and parietal cortex is associated with increased risk of future clinical progression to dementia.

In the present study we have investigated cognitively normal patients with SCD. Self-perceived decline could be a reflection of underlying neurodegeneration, but could also be related to many other factors, like sleep disturbances, mental illness, substance use/abuse, personality traits (e.g. neuroticism) or normal aging. A former study has shown that cognitive complaints together with excessive worrying is associated with an increased risk of dementia.<sup>7</sup> This illustrates that although the majority of SCD patients does not have AD, a small proportion of people may be at the earliest stages of AD, and these individuals might benefit from future preventive strategies or disease modifying therapies.<sup>12,31</sup> Compared to community-dwelling elderly with complaints, SCD patients are a unique group to study AD because they actively seek help by visiting a memory clinic, but still have intact cognitive function.



**Figure 1.** Kaplan-Meier curves of cortical thickness of the AD-signature cortical thickness (A), and medial temporal cortical thickness (B) in relation to clinical progression to mild cognitive impairment (MCI) or dementia. Abbreviation. CP, clinical progression. Separate lines depict baseline cortical thickness split in tertiles (low/ medium/ high)

AD develops gradually and the earliest brain changes occur years, probably decades before clinical onset of the disease. Previous studies have suggested that a specific pattern of cortical thinning, which has been coined the cortical AD-signature could be present up to a decade prior to AD diagnosis.<sup>4-6</sup> In general, this proposed AD-signature was associated with an increased risk of clinical progression in SCD patients. When we further stratified analyses based on clinical outcome, we found that this association was driven by those patients progressing to dementia, but not by patients progressing to MCI. The predictive value seemed to be nonspecific for progression to AD or non-AD. The strongest predictor of progression to AD dementia was cortical thinning in the temporal and parietal gyri, while other regions, particularly the frontal lobe, were not associated with increased risk of progression to AD dementia.

We observed that thinner cortex of the AD-signature was also associated with progression to non-AD. Although it needs to be interpreted with caution, cortical patterns associated with increased risk to non-AD were somewhat more widespread compared to SCD patients with progression to AD dementia, and seemed to cover multiple fronto-temporo-parietal regions within the AD-signature. Other studies on cortical thickness found pronounced temporo-parietal and global atrophy in AD compared to FTD,<sup>32,33</sup> and vascular dementia.<sup>34</sup> An explanation could be that the cortical AD-signature has been developed based on results from individuals that were on average ten years older,<sup>4,5</sup> thus reflecting a

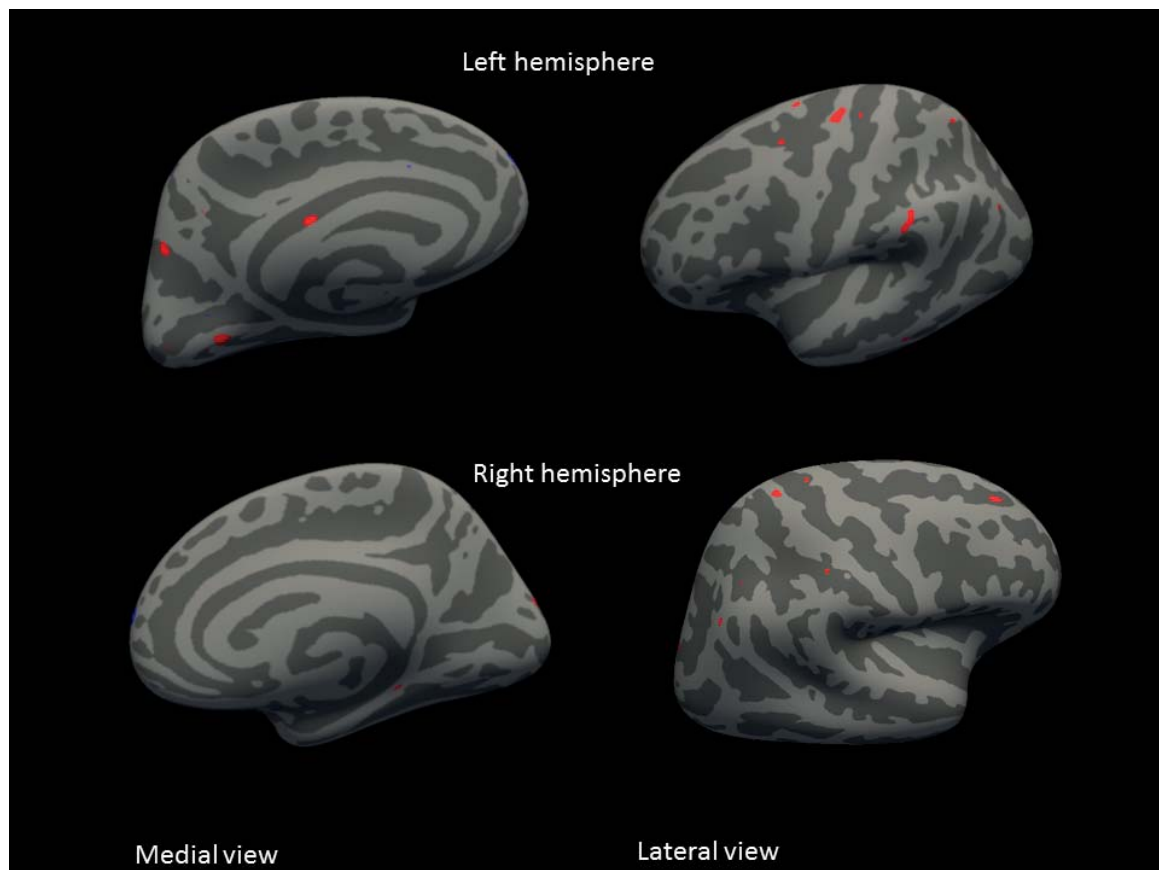
more general neurodegenerative process with concomitant cerebral vascular disease.<sup>35,36</sup> In addition, other studies have consistently demonstrated that cortical thinning during normal aging is predominantly found in the prefrontal cortex,<sup>36–38</sup> suggesting that frontal gyri of the AD-signature are likely influenced by age.

In our study, the AD-signature was not associated with progression to MCI, although the majority of MCI patients were classified with predominant amnesic cognitive deficits. A former study demonstrated that thinner cortex of the AD-signature predicts progression to AD dementia in MCI,<sup>39</sup> whereas in our study we extend the predictive value of the AD-signature in SCD patients with progression to AD. Our results illustrate that amnesic MCI is possibly a heterogeneous syndrome, which could be due to underlying AD, but likely also induced by other factors such as subclinical mental illness.

It could be that pre-symptomatic neural changes were already more extensive at the first visit in SCD patients with incident clinical progression to dementia. Therefore, future studies should compare the temporal evolution of cortical atrophy patterns across several pre-symptomatic dementia syndromes to identify unique disease signatures. Also, but beyond the scope of the current study, we have not taken into account the role of cognitive brain reserve or compensatory mechanisms. In a former study it was demonstrated that education or cognitive activity could mediate associations between cortical thickness and time to AD progression.<sup>40,41</sup> Effects of cognitive reserve were demonstrated for posterior cingulate, medial and lateral temporal regions, but it remains to be clarified if cognitive reserve plays a role in the AD-signature.

Partly in line with literature, we found thinner temporo-parietal cortex in patients that were going to progress on average three years later.<sup>6</sup> Within the regions constituting the AD-signature region, the medial temporal lobe entailed the highest risk of future progression to MCI and AD, in line with former neuroimaging studies predicting progression to AD-dementia in patients with MCI.<sup>42–45</sup> To date only a few neuroimaging studies have investigated brain structure in SCD patients, and found decreased medial temporal volumes in patients with complaints compared to without complaints.<sup>13,14,16</sup> These former studies were all cross-sectional in nature, hence they were not able to relate imaging abnormalities to incident clinical progression. Compared to other studies we found slightly thinner medial temporal cortex in our patients,<sup>6,16,46</sup> but we furthermore showed that thinner medial temporal cortex had a fivefold increased risk of clinical progression. The predictive value of hippocampal volumes and medial temporal cortex were quite comparable, although the predictive value of the medial temporal lobe was slightly stronger. Moreover, hippocampal volume did not add any predictive value over the effect of cortical thickness of the medial temporal lobe.<sup>39,47</sup> Of note, hippocampus volume was the only brain region associated with clinical progression to MCI, thus likely an early marker for AD. In contrast to previous SCD studies,<sup>13–16</sup> our exploratory vertex-wise analyses did not indicate parahippocampal or entorhinal abnormalities in patients who

progressed, but strongest effects were found in the adjacent anterior lingual cortex, which is also located in the medial temporal lobe. Lingual gyri are related to explicit memory encoding, topographical orientation, and exhibit lesions in early AD neuropathological stages.<sup>43,48–50</sup> Using a more lenient threshold, vertex-wise analyses revealed thinner supramarginal, superior parietal, and parahippocampal gyri, which are all part of the AD-signature, in the SCD progressive group.



**Figure 2. Vertex-wise analyses of cortical thickness between subjective cognitive decline (SCD) patients with and without clinical progression to mild cognitive impairment (MCI) or dementia superimposed on an average pial surface. Red reflects thinner cortex, whereas blue reflects thicker cortex at baseline in SCD patients with clinical progression compared to patients without clinical progression.**

A strength of this study was our thorough standardized work-up. All patients underwent extensive investigations and showed no signs of (mild) cognitive impairment at baseline. In addition, subjects with a psychiatric diagnosis (e.g. major depression, schizophrenia) were not included. Several potential limitations merit attention. First, we investigated SCD in a memory clinic, hence it is unknown to what extent our results can be extrapolated to community-dwelling elderly with subjective cognitive complaints. On the other side, because subjects visited a hospital, our results are clinically relevant since these patients do seek help. Second, MRI scans were acquired on two different systems, which might

influence our results. Nonetheless, we deliberately controlled for scanner type in all statistical analyses, and our results robustly identified thinning of regional cortex in SCD patients at risk of clinical progression. Third, although we had an average follow-up time of 3 years, which is rather long compared to other studies, it is likely that more patients will progress at later times, since the earliest brain changes leading to AD probably occur as early as 20 years before clinical manifestation of the disease. Our current progression rates to dementia were slightly lower than the rates reported by a former study on patients with complaints and worries,<sup>7</sup> but comparable to incidence rates in community-dwelling elderly.<sup>51-53</sup> Notwithstanding, we investigated a relatively young patient group, and our results illustrate that cognitively intact patients with cognitive complaints and thinner cortex in memory clinics might have an increased risk of AD. Finally, a limited number of SCD patients progressed to AD and non-AD dementia during the time of study. Nevertheless, we studied the AD-signature in a relatively large patient population, and our effect sizes were comparable to other single-center studies investigating cognitively intact elderly.<sup>5,6</sup>

In conclusion our findings suggest that reduced cortical thickness, especially of the temporal and parietal cortex, was associated with clinical progression to dementia in patients presenting with SCD at a memory clinic. The strongest predictor of progression to AD dementia was cortical thinning in the medial temporal lobe, in line with neuropathological Alzheimer-related disease staging models. Future studies using repeated neuropsychological assessment should investigate associations between regional cortical thickness and specific cognitive changes in the trajectory to MCI and dementia due to AD.

## REFERENCES

1. Scheltens P, Blennow K, Breteler MMB, et al. Alzheimer's disease. *Lancet (London, England)*. 2016;6736(15):1-13. doi:10.1016/S0140-6736(15)01124-1.
2. Scheltens P, Leys D, Barkhof F, et al. Atrophy of medial temporal lobes on MRI in "probable" Alzheimer's disease and normal ageing: diagnostic value and neuropsychological correlates. *J Neurol Neurosurg Psychiatry*. 1992;55:967-972. doi:10.1136/jnnp.55.10.967.
3. Jack CR, Petersen RC, Xu YC, et al. Medial temporal atrophy on MRI in normal aging and very mild Alzheimer's disease. *Neurology*. 1997;49:786-794. doi:10.1212/WNL.49.3.786.
4. Dickerson BC, Bakkour A, Salat DH, et al. The cortical signature of Alzheimer's disease: Regionally specific cortical thinning relates to symptom severity in very mild to mild AD dementia and is detectable in asymptomatic amyloid-positive individuals. *Cereb Cortex*. 2009;19(March):497-510. doi:10.1093/cercor/bhn113.
5. Bakkour A, Morris JC, Dickerson BC. The cortical signature of prodromal AD: Regional thinning predicts mild AD dementia. *Neurology*. 2009;72:1048-1055. doi:10.1212/01.wnl.0000340981.97664.2f.
6. Dickerson BC, Stoub TR, Shah RC, et al. Alzheimer-signature MRI biomarker predicts AD dementia in cognitively normal adults. *Neurology*. 2011;76:1395-1402. doi:10.1212/WNL.0b013e3182166e96.
7. Jessen F, Wiese B, Bachmann C, et al. Prediction of dementia by subjective memory impairment: effects of severity and temporal association with cognitive impairment. *Arch Gen Psychiatry*. 2010;67:414-422. doi:10.1001/archgenpsychiatry.2010.30.
8. Scheef L, Spottke A, Daerr M, et al. Glucose metabolism, gray matter structure, and memory decline in subjective memory impairment. *Neurology*. 2012;79(13):1332-1339. doi:10.1212/WNL.0b013e31826c1a8d.
9. Schultz SA, Oh JM, Kosciak RL, Dowling NM, Gallagher CL, Carlsson CM, Bendlin BB, LaRue A, Hermann BP, Rowley HA, Asthana S, Sager MA, Johnson SC OO. Subjective memory complaints, cortical thinning, and cognitive dysfunction in middle-aged adults at risk for AD. *Alzheimer's Dement*. 2015;(1):33-40. <http://www.ncbi.nlm.nih.gov/pubmed/25938132>.
10. Schmand B, Jonker C, Hooijer C, Lindeboom J. Subjective memory complaints may announce dementia. *Neurology*. 1996;46(1):121-125. doi:10.1212/WNL.46.1.121.
11. Van Harten AC, Visser PJ, Pijnenburg YAL, et al. Cerebrospinal fluid A $\beta$ 42 is the best predictor of clinical progression in patients with subjective complaints. *Alzheimer's Dement*. 2013;9(5):481-487. doi:10.1016/j.jalz.2012.08.004.
12. Jessen F, Amariglio RE, van Boxtel M, et al. A conceptual framework for research on subjective cognitive decline in preclinical Alzheimer's disease. *Alzheimer's Dement*. 2014:1-9. doi:10.1016/j.jalz.2014.01.001.
13. van der Flier WM, van Buchem MA, Weverling-Rijnsburger AWE, et al. Memory complaints in patients with normal cognition are associated with smaller hippocampal volumes. *J Neurol*. 2004;251(6):671-675. doi:10.1007/s00415-004-0390-7.
14. Hafkemeijer A, Altmann-Schneider I, Oleksik AM, et al. Increased functional connectivity and brain atrophy in elderly with subjective memory complaints. *Brain Connect*. 2013;3(4):353-362. doi:10.1089/brain.2013.0144.
15. Saykin AJ, Wishart HA, Rabin LA, et al. Older adults with cognitive complaints show brain atrophy similar to that of amnesic

- MCI. *Neurology*. 2006;67(5):834-842. doi:10.1212/01.wnl.0000234032.77541.a2.
16. Meiberth D, Scheef L, Wolfsgruber S, Boecker H, Block W T, F, Erk S, Heneka MT, Jacobi H, Spottke A, Walter H W, M, Hu X JF. Cortical thinning in individuals with subjective memory impairment. *J Alzheimers Dis*. 2015. doi:10.3233/JAD-142322.
  17. Van Der Flier WM, Pijnenburg YAL, Prins N, et al. Optimizing patient care and research: The Amsterdam dementia cohort. *J Alzheimer's Dis*. 2014;41:313-327. doi:10.3233/JAD-132306.
  18. Benedictus MR, van Harten AC, Leeuwis AE, et al. White Matter Hyperintensities Relate to Clinical Progression in Subjective Cognitive Decline. *Stroke*. 2015. doi:10.1161/STROKEAHA.115.009475.
  19. Mulder C, Verwey N a, van der Flier WM, et al. Amyloid-beta(1-42), total tau, and phosphorylated tau as cerebrospinal fluid biomarkers for the diagnosis of Alzheimer disease. *Clin Chem*. 2010;56(2):248-253. doi:10.1373/clinchem.2009.130518.
  20. Zwan M, van Harten A, Ossenkoppele R, et al. Concordance between cerebrospinal fluid biomarkers and [<sup>11</sup>C]PIB PET in a memory clinic cohort. *J Alzheimer's Dis*. 2014;41(3):801-807. <http://ovidsp.ovid.com/ovidweb.cgi?T=JS&PAGE=reference&D=psyc11&NEWS=N&AN=2014-31084-017>.
  21. McKhann GM, Knopman DS, Chertkow H, et al. The diagnosis of dementia due to Alzheimer's disease: Recommendations from the National Institute on Aging-Alzheimer's Association workgroups on diagnostic guidelines for Alzheimer's disease. *Alzheimer's Dement*. 2011;7:263-269. doi:10.1016/j.jalz.2011.03.005.
  22. Petersen RC, Smith GE, Waring SC, Ivnik RJ, Tangalos EG, Kokmen E. Mild cognitive impairment: clinical characterization and outcome. *Arch Neurol*. 1999;56:303-308. doi:10.1001/archneur.56.3.303.
  23. Román GC, Tatemichi TK, Erkinjuntti T, et al. Vascular dementia: diagnostic criteria for research studies. Report of the NINDS-AIREN International Workshop. *Neurology*. 1993;43(2):250-260. doi:10.1212/WNL.43.2.250.
  24. Rascovsky K, Hodges JR, Knopman D, et al. Sensitivity of revised diagnostic criteria for the behavioural variant of frontotemporal dementia. *Brain*. 2011;134(9):2456-2477. doi:10.1093/brain/awr179.
  25. Albert MS, DeKosky ST, Dickson D, et al. The diagnosis of mild cognitive impairment due to Alzheimer's disease: Recommendations from the National Institute on Aging-Alzheimer's Association workgroups on. *Alzheimer's ...*. 2011;7(3):270-279. doi:10.1016/j.jalz.2011.03.008.The.
  26. Jack CR, Knopman DS, Weigand SD, et al. An operational approach to National Institute on Aging-Alzheimer's Association criteria for preclinical Alzheimer disease. *Ann Neurol*. 2012;71:765-775. doi:10.1002/ana.22628.
  27. Fischl B, Van Der Kouwe A, Destrieux C, et al. Automatically Parcellating the Human Cerebral Cortex. *Cereb Cortex*. 2004;14(1):11-22. doi:10.1093/cercor/bhg087.
  28. Desikan RS, Ségonne F, Fischl B, et al. An automated labeling system for subdividing the human cerebral cortex on MRI scans into gyral based regions of interest. *Neuroimage*. 2006;31:968-980. doi:10.1016/j.neuroimage.2006.01.021.
  29. Lerch JP, Evans AC. Cortical thickness analysis examined through power analysis and a population simulation. *Neuroimage*. 2005;24(1):163-173. doi:10.1016/j.neuroimage.2004.07.045.
  30. Patenaude B, Smith SM, Kennedy DN, Jenkinson M. A Bayesian model of shape and appearance for subcortical brain segmentation. *Neuroimage*. 2011;56(3):907-922. doi:10.1016/j.neuroimage.2011.02.046.



31. Sperling R. Can we detect Alzheimer's disease 10 years before dementia and why would we want to? *Alzheimer's Dement.* 2011;7(4):S805. doi:10.1016/j.jalz.2011.05.2319.
32. Du A-T, Schuff N, Kramer JH, et al. Different regional patterns of cortical thinning in Alzheimer's disease and frontotemporal dementia. *Brain.* 2007;130(Pt 4):1159-1166. doi:10.1093/brain/awm016.
33. Hartikainen P, Räsänen J, Julkunen V, et al. Cortical Thickness in Frontotemporal Dementia, Mild Cognitive Impairment, and Alzheimer's Disease. *J Alzheimers Dis.* 2012;29:1-18. doi:10.3233/JAD-2012-112060.
34. Kim CH, Seo SW, Kim GH, et al. Cortical thinning in subcortical vascular dementia with negative 11C-PiB PET. *J Alzheimer's Dis.* 2012;31(2):315-323. doi:10.3233/JAD-2012-111832.
35. Schmidt R, Ropele S, Enzinger C, et al. White matter lesion progression, brain atrophy, and cognitive decline: The Austrian stroke prevention study. *Ann Neurol.* 2005;58(4):610-616. doi:10.1002/ana.20630.
36. Bakkour A, Morris JC, Wolk DA, Dickerson BC. The effects of aging and Alzheimer's disease on cerebral cortical anatomy: Specificity and differential relationships with cognition. *Neuroimage.* 2013;76:332-344. doi:10.1016/j.neuroimage.2013.02.059.
37. Sowell ER, Peterson BS, Thompson PM, Welcome SE, Henkenius AL, Toga AW. Mapping cortical change across the human life span. *Nat Neurosci.* 2003;6(3):309-315. doi:10.1038/nn1008.
38. Hurtz S, Woo E, Kebets V, et al. Age effects on cortical thickness in cognitively normal elderly individuals. *Dement Geriatr Cogn Dis Extra.* 2014;4(2):221-227. doi:10.1159/000362872.
39. Dickerson BC, Wolk D a. Biomarker-based prediction of progression in MCI: Comparison of AD signature and hippocampal volume with spinal fluid amyloid- $\beta$  and tau. *Front Aging Neurosci.* 2013;5(October):1-9. doi:10.3389/fnagi.2013.00055.
40. Querbes O, Aubry F, Pariente J, et al. Early diagnosis of Alzheimer's disease using cortical thickness: impact of cognitive reserve. *Brain.* 2009;132(Pt 8):2036-2047. doi:10.1093/brain/awp105.
41. Martins R, Joannette Y, Monchi O. The implications of age-related neurofunctional compensatory mechanisms in executive function and language processing including the new Temporal Hypothesis for Compensation. *Front Hum Neurosci.* 2015;9(April):Article 221. doi:10.3389/fnhum.2015.00221.
42. Spulber G, Niskanen E, MacDonald S, et al. Evolution of Global and Local Grey Matter Atrophy on Serial MRI Scans During the Progression from MCI to AD. *Curr Alzheimer Res.* 2012;9(4):516-524. doi:10.2174/156720512800492486.
43. Chételat G, Landeau B, Eustache F, et al. Using voxel-based morphometry to map the structural changes associated with rapid conversion in MCI: A longitudinal MRI study. *Neuroimage.* 2005;27(4):934-946. doi:10.1016/j.neuroimage.2005.05.015.
44. Risacher SL, Saykin AJ, West JD, Shen L, Firpi HA, McDonald BC. Baseline MRI predictors of conversion from MCI to probable AD in the ADNI cohort. *Curr Alzheimer Res.* 2009;6(4):347-361. doi:10.2174/156720509788929273.
45. den Heijer T, van der Lijn F, Koudstaal PJ, et al. A 10-year follow-up of hippocampal volume on magnetic resonance imaging in early dementia and cognitive decline. *Brain.* 2010;133(Pt 4):1163-1172. doi:10.1093/brain/awq048.
46. Möller C, Hafkemeijer A, Pijnenburg YAL, et al. Different patterns of cortical gray matter loss over time in behavioral variant FTD and AD. *Neurobiol Aging.* 2015;38:21-31. doi:10.1016/j.neurobiolaging.2015.10.020.

47. Hwang J, Kim CM, Jeon S, et al. Prediction of Alzheimer's disease pathophysiology based on cortical thickness patterns. *Alzheimer's Dement Diagnosis, Assess Dis Monit*. 2015;2:58-67. doi:10.1016/j.dadm.2015.11.008.
48. Braak H, Alafuzoff I, Arzberger T, Kretschmar H, Tredici K. Staging of Alzheimer disease-associated neurofibrillary pathology using paraffin sections and immunocytochemistry. *Acta Neuropathol*. 2006;112(4):389-404. doi:10.1007/s00401-006-0127-z.
49. Golby A, Silverberg G, Race E, et al. Memory encoding in Alzheimer's disease: an fMRI study of explicit and implicit memory. *Brain*. 2005;128(Pt 4):773-787. doi:10.1093/brain/awh400.
50. Takahashi N, Kawamura M. Pure topographical disorientation--the anatomical basis of landmark agnosia. *Cortex*. 2002;38(5):717-725. doi:10.1016/S0010-9452(08)70039-X.
51. Roberts R KD. Classification and Epidemiology of MCI. *Clin Geriatr Med 2013 Novemb; 29(4) doi101016/j.cger201307003 NIH*. 2014;29(4):1-19. doi:10.1016/j.cger.2013.07.003. Classification.
52. Ott A, Breteler MM, van Harskamp F, Stijnen T, Hofman A. Incidence and risk of dementia. The Rotterdam Study. *Am J Epidemiol*. 1998;147(6):574-580. <http://www.ncbi.nlm.nih.gov/pubmed/9521184>.
53. Fratiglioni L, De Ronchi D, Aguero-Torres H. Worldwide prevalence and incidence of dementia. *Drugs and Aging*. 1999;15(5):365-375. doi:10.2165/00002512-199915050-00004.