

# VU Research Portal

## Improving cochlear implant rehabilitation

de Graaff, F.

2019

### **document version**

Publisher's PDF, also known as Version of record

[Link to publication in VU Research Portal](#)

### **citation for published version (APA)**

de Graaff, F. (2019). *Improving cochlear implant rehabilitation*. [PhD-Thesis - Research and graduation internal, Vrije Universiteit Amsterdam].

### **General rights**

Copyright and moral rights for the publications made accessible in the public portal are retained by the authors and/or other copyright owners and it is a condition of accessing publications that users recognise and abide by the legal requirements associated with these rights.

- Users may download and print one copy of any publication from the public portal for the purpose of private study or research.
- You may not further distribute the material or use it for any profit-making activity or commercial gain
- You may freely distribute the URL identifying the publication in the public portal

### **Take down policy**

If you believe that this document breaches copyright please contact us providing details, and we will remove access to the work immediately and investigate your claim.

### **E-mail address:**

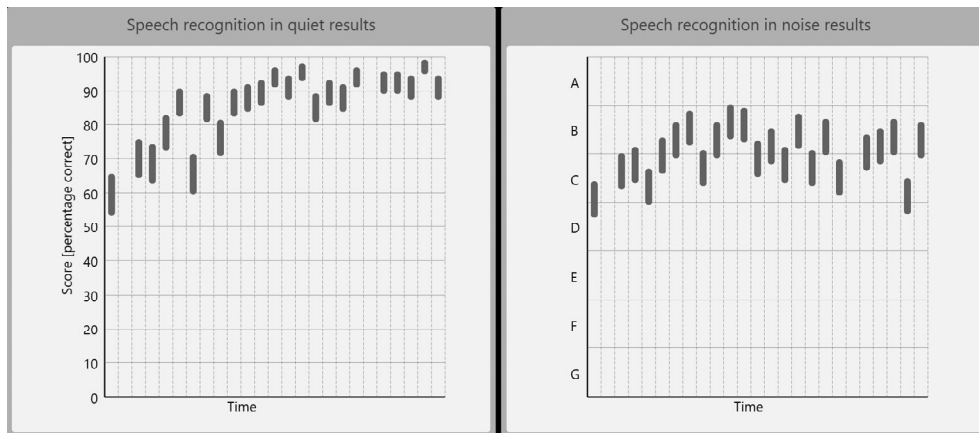
[vuresearchportal.ub@vu.nl](mailto:vuresearchportal.ub@vu.nl)

# Appendices



## Appendix A

Example bar graph showing the speech recognition in quiet (left panel) and speech recognition in noise scores (right panel).



Details of the speech reception threshold (SRT) categories in dB SNR that were used to present the results of the digits-in-noise test to the participants.

---

**Category A**

< -7.5 dB SNR

(reference category for NH adults; Smits et al., 2013)

**Category B**

-7.5 to -4.5 dB SNR

**Category C**

-4.5 to -1.5 dB SNR

**Category D**

-1.5 to 1.5 dB SNR

**Category E**

1.5 to 4.5 dB SNR

**Category F**

4.5 to 7.5 dB SNR

**Category G**

> 7.5 dB SNR

---

## Appendix B

### Search strategy

Database	Syntax	Results
PubMed	<p>#1</p> <p>Search (“Hearing Aids”[Mesh:NoExp] OR “Cochlear Implants”[Mesh] OR hearing aid*[tiab] OR Cochlear Implant*[tiab] OR Cochlear Prothes*[tiab] OR Auditory Prothes*[tiab] OR hearing aid*[ot] OR Cochlear Implant*[ot] OR Cochlear Prothes*[ot] OR Auditory Prothes*[ot])</p> <p>#2</p> <p>Search (((“Software”[Majr] OR (multipl*[ti] AND (memor*[ti] OR program*[ti]))) OR programmable*[ti] OR map[ti] OR maps[ti] OR microphone*[ti] OR multi memor*[ti] OR setting*[ti] OR auto select*[tiab] OR autoselect*[tiab] OR microphone*[ti] OR directional*[tiab] OR omnidirectional*[tiab] OR unidirectional*[tiab] OR logging*[ti] OR classificat*[ti] OR setup*[ti] OR set up*[ti] OR log[ti] OR logs[ti]) OR (multipl*[ot] AND (memor*[ot] OR program*[ot]))) OR programmable*[ot] OR map[ot] OR maps[ot] OR microphone*[ot] OR multi memor*[ot] OR setting*[ot] OR auto select*[ot] OR microphone*[ot] OR directional*[ot] OR omnidirectional*[ot] OR unidirectional*[ot] OR autoselect*[ot] OR logging*[ot] OR classificat*[ot] OR setup*[ot] OR set up*[ot] OR log[ot] OR logs[ot]) OR scene classification*[tiab] OR scene classification*[ot] OR environmental classification*[tiab] OR environmental classification*[ot]))</p> <p>#1 AND #2</p>	675
EMBASE	Modified search strategy from PubMed	793
Web of science	Modified search strategy from PubMed	588

