

VU Research Portal

A protocol for evaluating the accuracy of 3D body scanners

Kouchi, Makiko; Mochimaru, Masaaki; Bradtmiller, Bruce; Daanen, Hein; Li, Peng; Nacher, Beatriz; Nam, Yunja

published in

Work: A Journal of Prevention, Assessment and Rehabilitation
2012

DOI (link to publisher)

[10.3233/WOR-2012-0064-4010](https://doi.org/10.3233/WOR-2012-0064-4010)

document version

Publisher's PDF, also known as Version of record

[Link to publication in VU Research Portal](#)

citation for published version (APA)

Kouchi, M., Mochimaru, M., Bradtmiller, B., Daanen, H., Li, P., Nacher, B., & Nam, Y. (2012). A protocol for evaluating the accuracy of 3D body scanners. *Work: A Journal of Prevention, Assessment and Rehabilitation*, 41(Supplement 1), 4010-4017. <https://doi.org/10.3233/WOR-2012-0064-4010>

General rights

Copyright and moral rights for the publications made accessible in the public portal are retained by the authors and/or other copyright owners and it is a condition of accessing publications that users recognise and abide by the legal requirements associated with these rights.

- Users may download and print one copy of any publication from the public portal for the purpose of private study or research.
- You may not further distribute the material or use it for any profit-making activity or commercial gain
- You may freely distribute the URL identifying the publication in the public portal

Take down policy

If you believe that this document breaches copyright please contact us providing details, and we will remove access to the work immediately and investigate your claim.

E-mail address:

vuresearchportal.ub@vu.nl

A protocol for evaluating the accuracy of 3D body scanners

Makiko Kouchi^{a,*}, Masaaki Mochimaru^a, Bruce Bradtmiller^b, Hein Daanen^c, Peng Li^d, Beatriz Nacher^e, and Yunja Nam^f

^a*Digital Human Research Center, National Institute of Advanced Industrial Science and Technology, 2-3-26 Aomi, Koto-ku, Tokyo 135-0064, Japan*

^b*Anthrotech Inc. 503 Xenia Avenue, Yellow Springs, OH 45387, U.S.A.*

^c*Department of Human Performance, TNO Defence, Security and Safety, Business Unit of Human Factors, PO Box 23, 3769ZG Soesterberg, The Netherlands*

^d*Ergonomics Team, WarSTAR, US Army Natick Soldier Research Development & Engineering Center, Natick MA 01760, U.S.A.*

^e*Instituto de Biomecánica de Valencia, Universidad Politecnica de Valencia, Edificio 9C, Camino de Vera s/n E-46022 Valencia, Spain*

^f*Department of Clothing and Textiles, College of Human Ecology, Seoul National University, San 56-1, Shillim-Dong, Kwanak-gu, Seoul 151-742, Korea*

Abstract. Scan-derived landmarks locations and surface shapes are more and more used, but there is no commonly accepted protocol for evaluating the accuracy of these measurements. Therefore we propose a protocol for evaluating the accuracy of surface shape and the repeatability of scan-derived landmark locations. According to existing Japanese and German domestic standards, we propose to use an artefact (e.g. sphere with diameter of about 120 mm) calibrated very accurately for evaluating the accuracy of scanner-systems. For evaluating the repeatability of landmark locations, we propose to use an anthropomorphic dummy with landmark locations premarked. These test objects are measured by a 3D body scanner to be evaluated. Evaluation parameters such as trueness, precision, and repeatability are calculated from the measured data. A round-robin test was conducted in six different institutes using 17 body/head/foot scanners produced by eight companies. The purposes of the round-robin test were to evaluate the availability of test objects to different body scanners, and to examine the measurement locations of test objects and quality parameters to be reported. As a result, the proposed test objects could be measured and the data exported by all scanner systems except one, which could not export the ball measurement. For a comparative purpose, a figure of measured surface might be useful.

Keywords: Reliability, accuracy, 3D anthropometry, landmarks

1. Introduction

Quality of scan-derived anthropometric measurements is one of a main concern for users of body scanners. Recently, 3D body scanners have been more and more used in anthropometric surveys [1,2], but it has been reported that scan-derived body dimensions are not always comparable with those obtained by traditional methods [3,4]. Combining scan-derived 1D measurements and those obtained by the

traditional methods to make one database may cause problems in terms of the comparability of the data. To avoid this problem, an international standard ISO 20685[5] has been developed to establish a protocol for evaluating the comparability between scan-derived 1D measurements and those obtained by the traditional methods. However, landmark locations and body shape can also be obtained by a body scanner, and recently these types of data have become more and more utilized through homologous body

* Corresponding author. E-mail: m-kouchi@aist.go.jp.

shape modeling [6,7]. ISO TC159/SC3/WG1 has been working to develop international standards related to the quality control of anthropometric data. Considering the present situation, ISO TC159/SC3/WG1 plans to make an international standard that establishes a protocol for evaluating the accuracy of 3D shape measurements and repeatability of landmark locations. The accuracy of scanner-derived measurements is affected by more factors than that of traditional measurements as shown in Fig. 1. In a tentative protocol, two types of test objects are used: a ball is used to evaluate the accuracy of a scanner system as a tool including both hardware and software; and a dummy is used to evaluate the repeatability of landmark locations. To validate this tentative protocol, we conducted a round-robin test using these test objects. The purposes the round-robin test were to evaluate the availability of test objects to different body scanners, and to obtain materials for discussion on the locations of measurement of test object, quality parameters to represent the scanner performance to be reported. In this paper, we present the results of the round-robin test, and evaluate the tentative protocol for evaluating the accuracy of 3D body scanners.

Factor		Data	Traditional body dimension	Scan-derived measurement		
				Body dimension	Landmark coordinate	Surface shape
Tool	Hardware accuracy		Accuracy of instrument			
	Software performance			Accuracy of scanner system hardware		
Human	Measurer skill		Skill of measurement	Landmarking software		
				Measurement calculation software		
	Operator skill			Skill of landmarking		
				Landmarking software		
Subject			Measurement calculation software			
			Repeatability of posture			
				Body sway during scan		

Fig. 1. Factors that affect the accuracy of anthropometric data.

2. Artefacts

2.1. Ball

There are Japanese and German domestic standards that have established methods of acceptance test and reverification of optical 3D measuring systems. In these standards, ball, ball-bars, and rectangular parallelepipeds are used [8-11]. International standardization of this protocol is in progress by ISO/TC122. Since body scanners are included in optical 3D measuring systems, it is reasonable to use test objects used in these standards. In the present protocol, a ball with diameter of 120.0159 mm (sphericity = 22.1 μm) was used as one of the test objects. The artefact is a hollow steel ball, and the surface

was blasted and treated with TiN to diffuse the reflection (Fig. 2). This treatment was the most successful in a round-robin test conducted in Japan in which balls of several different surface treatments were measured by different 3D measuring systems [12]. The diameter of the ball was determined based on the human body size, cost of manufacturing, and ease of handling.

The ball was calibrated in National Metrology Institute of Japan, AIST, using a coordinate measuring machine (CMM). Only this way, measurement by a 3D scanner can be traceable to the international standard of the length.



Fig. 2. Artefact: ball (Ø=120.0159 mm, sphericity=22.1 μm)

2.2. Dummy

We used a whole body dummy and a head dummy as described below. We did not use a foot dummy.

2.2.1. Whole body dummy

One of the characteristics of body scanners is that they usually accompany with software to detect marker locations or calculate landmark locations. To evaluate landmark locations, an artefact similar to the actual human body is necessary. We used a whole body dummy with the posture recommended in ISO 20685. It is made of FRP (fiber reinforced plastic), with no movable parts such as joints, and has average body dimensions of Japanese females in their 20s (Fig. 3, left) (Nanasai Co. Ltd.) Locations of landmarks are marked with small dents.

2.2.2. Head dummy

For the head dummy, we used a dummy shown in Fig. 3, right. The form of the dummy does not reflect the average head form, but has been created so that it has difficult shape features to measure (Nanasai Co. Ltd.) Locations of landmarks are marked with small black dots.



Fig. 3. Dummies.

3. Measurement of the ball

3.1. Measurement locations of the ball

3.1.1. Whole body scanner

In existing standards [8,10], a test object is measured at 5 or 7 different locations. Example is the center and four locations at margin of scanning volume. However, in body scanners, only part of the scanning volume is used because only humans are measured. In the present protocol, we should obtain the data for deciding which locations are appropriate for evaluating a whole body scanner. Therefore, the nine locations shown in Fig. 4A are used. In determining these locations, we assumed that the subject stands with arms and legs abducted as recommended in ISO 20685. Accuracy of the ball placement is within ± 30 mm of the target position for height, lateral and antero-posterior directions. Placement of the ball is not very accurate because measurement results are not used for calibration, and it is difficult place a ball in an exact position in a space.

Because the ball is very close to the true sphere, it is not necessary to measure whole of the ball for the test. However, it is recommended that at least half of the ball should be measured at each location. Therefore, when the scanning volume is too small for locating the ball at locations specified in Fig. 4, the location was adjusted, and the adjustment was reported.

3.1.2. Head scanner

Seven locations as shown in Fig. 4B were selected for measurement. In determining these locations, we have assumed that the scanning volume is ranged from $300 \times 300 \times 300$ [mm] to $400 \times 400 \times 400$ [mm], and tried to cover the volume. The measurer decides the center of the scanning volume. Location #1 is the

center of the scanning volume. Locations #2 and #3 are higher or lower than the center by 80 mm, respectively. Locations #4 and #5 are anterior or posterior to the center by 80 mm. Locations #6 and #7 are 80 mm to the right or to the left, respectively. Accuracy of the ball placement is within ± 10 mm of the target position for height, lateral and antero-posterior directions.

3.1.3. Foot scanner

Four locations as shown in Fig. 4C were selected for measurement. In determining these locations, we assumed that the size of scanning volume is about 350 (antero-posterior direction) \times 150 (lateral direction) \times 200 (height) [mm]. Accuracy of the ball placement is within ± 10 mm of the target position for height, lateral and antero-posterior directions.

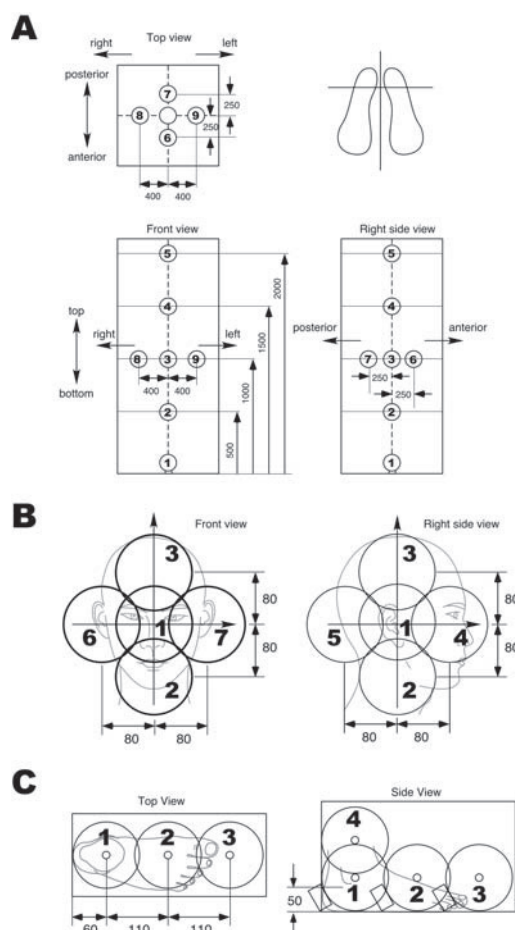


Fig. 4. Locations of measurement of the ball (unit:mm)

3.2. Measurement

The ball was measured at each location specified in Fig. 4. Measurement conditions should be the same with usual human body scanning. The data was exported in tab delimited text format or Wavefront OBJ format.

4. Measurement of the dummy

4.1. Landmarks

4.1.1. Whole body scanner

Forty-seven landmarks listed in Table 1 are used for evaluation. Landmarks #1-29 are defined in ISO 20685, and shall be used. Landmarks #30-47 are optional.

4.1.2. Head scanner

Fourteen landmarks listed in Table 2 are used for evaluation. Landmarks #1-9 are defined in ISO 20685, and shall be used. Landmarks #10-14 are optional.

4.2. Measurement

When marker stickers are used to calculate landmark locations, marker stickers are pasted on the dummy before measurement. After each scan, the point cloud data is saved in a tab-delimited text format or Wavefront OBJ format.

4.2.1. Whole body scanner

The dummy is placed at a location where a human subject stands. This location is the base location. The dummy is scanned 10 times. After each scan, location of dummy is slightly moved to simulate the variation in the position of human subjects. Variation in location includes antero-posterior and lateral translations and rotational differences. The following locations are used: (1) the base position, (2) 10 mm anterior to the base location, (3) 10 mm posterior to the base location, (4) 10 mm right to the base location, (5) 10 mm left to the base location, (6) rotate anticlockwise: place only the right heel anterior to the base location by 10 mm, (7) rotate clockwise: place only the left heel anterior to the base location by 10 mm, (8) 10 mm anterior to the base location, and rotate anticlockwise as the 6th position, (9) 10 mm posterior to the base location, and rotate clockwise as the 7th position, (10) base location. Point cloud data

measured at each location are saved in tab-delimited text format, or Wavefront OBJ format.

4.2.2. Head scanner

The dummy is scanned 10 times. The following locations are used: (1) base location (center of the scanning volume of a head scanner), (2) 10 mm anterior to the base location, (3) 10 mm posterior to the base location, (4) 10 mm right to the base location, (5) 10 mm left to the base location, (6) rotate anticlockwise (procedure of placement is specified in the protocol), (7) rotate clockwise (procedure of placement is specified in the protocol), (8) 10 mm anterior to the base location, and rotate anticlockwise as the 6th position, (9) 10 mm posterior to the base location, and rotate clockwise as the 7th position, (10) base location.

Table 1
Evaluated landmarks: whole body scanners

1	Vertex (top of head)	25	Tibiale, L
2	Tragion, R	26	Lateral malleolus, R
3	Tragion, L	27	Lateral malleolus, L
4	Infraorbitale, R	28	Suprapateralle, R
5	Infraorbitale, L	29	Suprapateralle, L
6	Glabella	30	Side neck point, R
7	Sellion	31	Side neck point, L
8	Menton	32	Juglar point
9	Opisthocranium	33	Ant. axilla point, R
10	Cervicale	34	Ant. axilla point, L
11	Acromioale, R	35	Post. axilla point, R
12	Acromioale, L	36	Post. axilla point, L
13	Mesosternale	37	Omphalion
14	Thelion, R	38	Trochanterion, R
15	Thelion, L	39	Trochanterion, L
16	Iliocristale, R	40	Buttock point, R
17	Iliocristale, L	41	Buttock point, L
18	Ant. sup. iliac spine, R	42	Radiale, R
19	Ant. sup. iliac spine, L	43	Radiale, L
20	Stylian, R	44	Mid patella, R
21	Stylian, L	45	Mid patella, L
22	Ulnar stylian, R	46	Sphyrion, R
23	Ulnar stylian, L	47	Sphyrion, L
24	Tibiale, R		

Table 2
Evaluated landmarks: head scanners

1	Vertex	6	Glabella	52	Gonion, L
2	Tragion, R	7	Sellion	53	Zygion, R
3	Tragion, L	8	Menton	54	Zygion, L
4	Infraorbitale, R	9	Opisthocranium	55	Pogonion
5	Infraorbitale, L	51	Gonion, R		

5. Quality parameters

5.1. The ball

Procedure for calculating quality parameters is as follows: (1) the measured data was imported to Geomagic studio (Geomagic Inc.), and data points that do not belong to the ball surface were eliminated manually. (2) Coordinates of the center of the best-fit sphere are calculated using the least squares method, by software developed for this purpose. The distance from each data point to the center of the best-fit sphere (radius) is calculated, and the diameter of the best-fit sphere is obtained as the mean of these distances. (3) Calculate the error of diameter measurement (PS) as the diameter of the best-fit sphere minus the true diameter given by CMM. (4) Calculate the following statistics of the distances from data points to the center of the best-fit sphere: N, mean, standard deviation (SD of radius), minimum, maximum, P1, P5, P50, P95, P99 values. (5) Error of spherical form measurement (PFS) is calculated as the maximum distance minus minimum distance.

As quality parameters, the maximum error and median error are calculated:

$$\text{The maximum error} = \text{PS}_{\text{Max}} + \text{PFS}_{\text{Max}},$$

$$\text{Average error} = \text{PS}_{\text{Median}} + \text{PFS}_{\text{Median}},$$

where PS_{Max} is the maximum PS among the nine/seven/four locations, and PFS_{Max} is the maximum value among the nine/seven/four PFS values. Similarly, $\text{PS}_{\text{Median}}$ and $\text{PFS}_{\text{Median}}$ are the median values. The maximum error represents the worst case in the scanning volume.

5.2. Landmark locations

It was not possible to give the true values for landmark locations because the shape of the dummy is too complicated for measuring landmark locations using CMM. Therefore, only the repeatability of landmark locations is evaluated.

Only those landmarks that could be measured in all of 10 scans are evaluated. The procedure is as follows: (1) Landmark coordinates obtained from scan #1 are used as the base data. (2) For each of other scan data, the coordinate system is transformed to minimize the sum of distances between the corresponding landmarks between the base data and the scan. (3) For each of comparison, for each landmark, the error is calculated as the distance between the corresponding landmark locations. (4) Using nine comparison data, calculate mean, standard deviation

and median of errors. (5) For each landmark, report mean error, median error, and standard deviation of error.

6. Results and Discussions

6.1. Availability of test objects

Tables 3 shows 11 whole body scanners, five head scanners, and four foot scanners evaluated in the present study.

All scanner systems could measure the dummy and export the measured data. However, we could not evaluate one whole body scanner using the ball. We could not export ball measurement using this scanner system, which was due to the software specification rather than the limit of the hardware [13].

6.2. Measurement of the ball

Figs. 5 and 6 show examples of evaluation results of three whole body scanners (Scanner 1, Scanner 2, and Scanner 3) based on the ball measurements. Fig. 5 shows PS values at nine locations. PS values are not uniform between nine locations in all scanners. Scanner 1 tends to measure the diameter larger than the true value. Scanner 2 has smaller PS values at locations #8 and #9. Scanner 3 has larger PS value at location #9. If the worst case is used, performance of scanner 2 is not much different from that of Scanner 1, but Scanner 2 has PS values closer to 0 than Scanner 1 at locations #1, #3-#7.

Fig. 6 shows PFS and SD of radius in the three whole body scanners. In all scanners the precision is not uniform between nine locations. Scanner 1 has larger variation of precision among the nine locations compared to Scanner 2 and Scanner 3. Scanner 1 has worse results than other scanners in some locations, but has as good results as other scanners in other locations. When PFS is large, SD of radius tends to be also large. However, Fig. 6 also shows that in some locations, PFS is considerably larger than expected from general relation between PFS and S.D. This is because minimum and maximum are sensitive to the existence of irregular values.

Fig. 7 shows examples of measurement results of the ball at location #2 by three whole body scanners. Measurements at location #2 by all three scanners have small PS (< 1 mm) and small SD or radius (< 1 mm). However, smoothness of the measured surface appears different between the three scanners.

Table 3
Availability of test objects

Scanner system			Measurement		N of LMs (N of evaluated LMs)	Comment
Measured part	Maker	type	Ball	Dummy		
Whole body	Hamamatsu	Bodyline scanner C9036-02S	OK	OK	47 (32)	Location #5: 1900 mm
Whole body	Hamamatsu	Bodyline scanner C9036-02	OK	OK	47 (35)	Location #5: 1900 mm
Whole body	Hamamatsu	Bodyline scanner C9036-01	OK	OK	Not evaluated	Location #5: 1750 mm
Whole body	Cyberware,	WB4	OK	OK	Not evaluated	
Whole body	Cyberware	WBX	OK	OK	Not evaluated	
Whole body	Cyberware	WB4-6004	OK	OK	44 (44)	
Whole body	Vitormics	VITUS smart XXL	OK	OK	17 (17)	
Whole body	TC2		n.a.	OK	Not evaluated	Ball data could not be exported
Whole body	Space Vision,	Cartecia BS02-N, 3 pole	OK	OK	Not evaluated	Location #5: 1700 mm, Locations #6 & #7: 250 mm, Locations #8 & #9: 300 mm
Whole body	Space Vision	Cartecia BS02, 3 pole	OK	OK	Not evaluated	Location #5: 1700 mm, Locations #6 & #7: 250 mm, Locations #8 & #9: 300 mm
Whole body	Space Vision	Cartecia BS02, 4 pole	OK	OK	Not evaluated	Location #5: 1700 mm, Locations #6 & #7: 250 mm, Locations #8 & #9: 300 mm
Head	I-Ware Laboratory,	HSU-01-3	OK	not measured	Not evaluated	dummy was not measured
Head	I-Ware Laboratory,	Rennacs 1.0	OK	not measured	Not evaluated	dummy was not measured
Head	Artec	TDSL 1.1	OK	OK	Not evaluated	Hand-held scanner. Dummy was scanned only once
Head	Cyberware	PX	OK	OK	14 (14)	
Head	Cyberware	3030 RGB/PS	OK	OK	12 (12)	
Foot	I-Ware Laboratory	Infot compact	OK	not measured	Not evaluated	Scan data at location #4 was not good
Foot	I-Ware Laboratory	Infot USB IFU-S-01	OK	not measured	Not evaluated	
Foot	I-Ware Laboratory	Infot compact	OK	not measured	Not evaluated	Scan data at location #4 was not good
Foot	DHRC, AIST	4D measurement system	OK	not measured	Not evaluated	Ball was measured during rolling

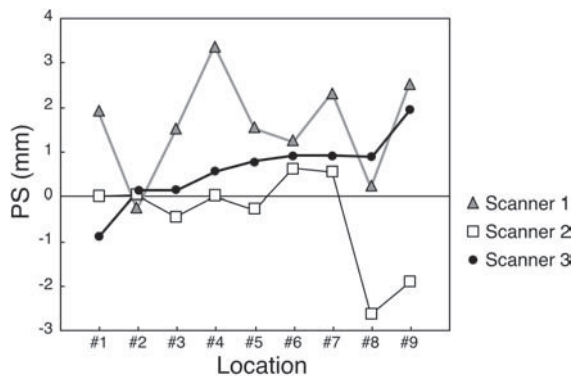


Fig. 5. Examples of evaluation results of whole body scanners based on ball measurement. Error of diameter measurement (PS) at nine locations

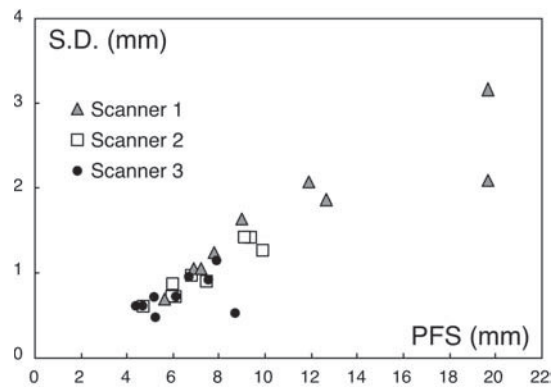


Fig. 6. Examples of evaluation results of whole body scanners based on ball measurement; PFS: error of spherical form measurement

surement; *S.D.*: standard deviations of the distance from each data point to the best-fit sphere

Fig. 8 shows ball measurements at locations #2 and #7 by Scanner 1. Large PS (2.29 mm) and large PFS (19.73 mm) values at location #7 may be due to problems in alignment and/or merging measurements by different cameras.

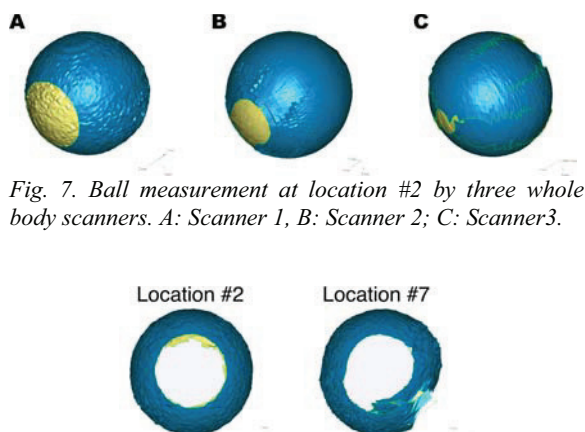


Fig. 7. Ball measurement at location #2 by three whole body scanners. A: Scanner 1, B: Scanner 2; C: Scanner 3.

Fig. 8. Ball measurement at locations #2 and #7 by whole body scanners, Scanner 1.

6.3. Measurement of the dummy

Fig. 9 shows examples of evaluation results of landmark locations for a whole body scanner, Scanner 1. When landmark coordinates obtained from each of scan #1 to scan #10 were used as the base data, obtained results can be very different. Therefore, we modified the procedure for calculating quality parameters of landmark errors. Procedure (1) – (3) in section 4.2 were repeated using each of scan #2 to scan #10 as the base data, and mean, standard deviation, and median were calculated using $10 \times 9 = 90$ comparison results. Table 6 shows examples of mean landmark errors for several landmarks by three whole body scanners. There is a strong positive linear relationship between mean error and median error ($r > 0.9$). Therefore only mean error or median error may provide enough information.

Scanner 2 and Scanner 3 have several landmarks with large mean errors. Since we used a dummy as the test object, we can ignore factors related to “subject” in Fig. 1. Also, since we evaluate the repeatability using the same marker locations, we can ignore factors related to “measurer skill” in Fig. 1. Therefore the differences between three scanners are due to the tool (hardware accuracy and software performance) and operator skill in using landmarking soft-

ware. Locations of marker stickers are automatically detected and labeled by software in Scanner 1, while they are determined and labeled manually by an operator in other two scanners. According to the evaluation results using the ball, performance of Scanner 1 as a tool is not better than other scanners, but repeatability of landmarking is as good as or sometimes better than other two scanners.

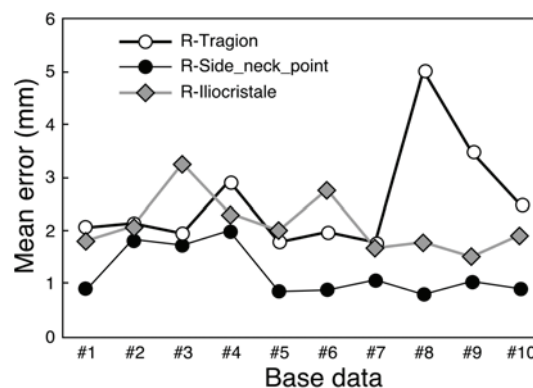


Fig. 9. Example of mean errors in landmarks when different scan is used as the base data. Data obtained by whole body scanner, Scanner 1.

6.4. Other consideration

Since body scanners are much more expensive and complex system than traditional tools, they give impression that scan-derived measurements are more accurate than traditional measurements. When the diameter of the ball is measured with a sliding caliper with long jaws, measurements taken by three anthropometrists were all 120.0 mm. This value is closer to the true diameter than any of scanners.

JIS B 7441 and VDI/VDE 2634 series establish an evaluation protocol for the agreement between scanner providers and scanner purchasers. On the other hand, the protocol proposed in this study is intended to establish an agreement between anthropometric database providers and data users. International standards related to the anthropometry established by ISO TC159/WC3/WG1 (ISO 7250-1, ISO 15535, and ISO 20685) are all intended for this purpose. Therefore database providers are expected to validate the accuracy of scanner system they use by conducting the evaluation, and to assure users the accuracy of scan-derived measurements. If the worst-case quality parameter of a scanner is better than the accuracy of traditional tools (1 mm), it is easy for a database provider to convince data users that the data is accurate. Three of head scanners and all foot scan-

ners satisfied this condition, but none of whole body scanner used in the present study did. If we use the worst case, the errors would be overestimated in some whole body scanners. Considering the between-location variation of the evaluation results, it may be better to report results from all locations rather than reporting only the worst case. Also it may be better to add quality parameters not sensitive to irregular values.

In the present study, we used all possible pairs of comparisons to calculate repeatability of landmark locations. As another possibility, generalized Procrustes method could be used. This will be considered.

7. Conclusions

We proposed a protocol for evaluating the accuracy of 3D body scanners using two types of test objects. The protocol was examined through a round-robin test. Proposed test objects were available for all scanners except one, in which measurement of the ball could not be exported. Calibrated ball was useful to evaluate the accuracy of length (accuracy of the diameter of the sphere) and shape (indicator of the smoothness of the measured ball surface). We proposed locations of ball measurement, and considered that providing results from all locations is better than providing only the worst case result. Anthropomorphic dummy of the standard posture with landmarks premarked was useful for evaluating the repeatability of landmark locations.

References

- [1] K.M. Robinette, H. Daanen, E. Paquet, The CAESAR project: a 3-D surface anthropometry survey, Proceedings of Second International Conference on 3-D Digital Imaging and Modeling (1999)
- [2] P. Treleaven, Sizing us up, IEEE Spectrum (2004) April: 17-19.
- [3] RS. Paquette, J.D. Brantley, B.D. Corner, P. Li, and T. Oliver, Automated extraction of anthropometric data from 3D images, Proceedings of the IEA 2000/ HFES 2000 Congress (2000) 6-727-730.
- [4] J.Y. Wong, A.K. Oh, E. Ohta, A.T. Hunt, G.F. Rogers, J.B. Mulliken, and C.K. Deutsch, Validity and reliability of craniofacial anthropometric measurement of 3D digital photogrammetric images, Cleft Palate Craniofac. J. 45 (2008) 232-239.
- [5] ISO 20685: 2005 3-D scanning methodologies for internationally compatible anthropometric databases.
- [6] M. Mochimaru and M. Kouchi, Statistics for 3D human body forms, SAE Technical Paper (2000) 2000-01-2149
- [7] B. Allen, B. Curless, and Z. Popovic, The space of human body shapes: reconstruction and parameterization from range scans. ACM Transactions on Graphics (ACM SIGGRAPH 2003) 22 (2003) 587-594.
- [8] JIS B 7441: 2009 Acceptance and reverification tests for coordinate measuring machines (CMM) with non-contacting probing systems.
- [9] VDI/VDE 2634 Part 1: 2002 Optical 3-D measuring systems Imaging systems with point-by-point probing.
- [10] VDI/VDE 2634 Part 2: 2002 Optical 3-D measuring systems Optical systems based on area scanning.
- [11] VDI/VDE 2634 part 3: 2008 Optical 3D-measuring systems - Multiple view systems based on area scanning.
- [12] S. Sato, S. Osawa, T. Takatsuji, M. Murakami and R. Harada, Test artifacts for the verification of optical digitizers, Key Engineering Materials, 381-382 (2008) 553-556.
- [13] Personal communication with the scanner maker

Table 4

Examples of landmarking errors for some landmarks by three whole body scanners (unit: mm)

Landmark	Scanner 1			Scanner 2			Scanner 3		
	Mean	S.D.	Median	Mean	S.D.	Median	Mean	S.D.	Median
Tragion, R	2.0	1.9	1.4	2.9	1.4	2.8	3.0	1.5	3.4
Infraorbitale, R	1.3	1.0	1.1	2.3	1.2	1.7	2.1	1.2	2.0
Cervicale	1.7	1.1	1.5	1.2	0.5	1.1	4.9	1.1	4.8
Mesosternale	2.7	1.6	2.9	1.9	0.9	2.1	2.8	1.1	2.9
Thelion, R	1.3	1.2	1.1	4.7	2.5	4	1.5	0.7	1.3
Iliocristale, R	1.8	1.3	1.4	1.0	0.5	1.1	2.2	0.9	2.4
Iliospinale ant., R	1.5	1.0	1.3	1.2	0.6	1.5	1.3	0.6	1.5
Styilion, R	2.4	0.8	2.2	1.5	1.1	1.2	2.3	1.0	2.5
Ulnar styilion, R	2.4	1.1	2.3	1.6	0.7	1.6	5.3	1.6	4.5
Tibiale, R	2.8	1.4	2.4	1.3	0.7	1.3	2.6	0.6	2.5
Side neck point, R	0.8	0.5	0.6	5.1	4.2	5.3	2.9	1.4	2.7
Ant. axilla point, R	1.9	1.0	1.7	5.3	3.1	5.1	1.0	0.4	1.0
Post. axilla point, R	2.6	1.0	2.2	2.9	1.6	2.9	1.9	1.7	1.8