

VU Research Portal

Family background and union formation and dissolution processes

Brons, M.D.

2020

document version

Publisher's PDF, also known as Version of record

[Link to publication in VU Research Portal](#)

citation for published version (APA)

Brons, M. D. (2020). *Family background and union formation and dissolution processes: A cross-national perspective*.

General rights

Copyright and moral rights for the publications made accessible in the public portal are retained by the authors and/or other copyright owners and it is a condition of accessing publications that users recognise and abide by the legal requirements associated with these rights.

- Users may download and print one copy of any publication from the public portal for the purpose of private study or research.
- You may not further distribute the material or use it for any profit-making activity or commercial gain
- You may freely distribute the URL identifying the publication in the public portal ?

Take down policy

If you believe that this document breaches copyright please contact us providing details, and we will remove access to the work immediately and investigate your claim.

E-mail address:

vuresearchportal.ub@vu.nl

Appendices Chapter 3

Table A3.1. Overall pooled model for all the 20 countries for respondents born between 1960 and 1994: Effect of parental education on timing of first marriage separately for women and men.

	Model 1	Model 2	Model 3a	Model 3b
	B (SE)	B (SE)	B (SE)	B (SE)
Women			Not cohabiting	Cohabiting
Effect parental education	-.129 ** (.016)	-.089 ** (.011)	-.121 ** (.014)	-.002 (.015)
Cross-national variation (I^2)	90.5%	76.5%	81.8%	70.2%
Men			Not cohabiting	Cohabiting
Effect parental education	-.120 ** (.015)	-.102 ** (.014)	-.118 ** (.019)	-.052 * (.019)
Cross-national variation (I^2)	79.9%	72.9%	82.6%	67.6%

Note: In all models controlled for age and squared term, birth year and squared term, and the interactions between parental education and age (and squared term).

* = $p < .05$, ** = $p < .01$

Figure A3.1a. Net effect of parental education on marriage for **women** (controlled for own education and enrollment) for 18 European and two North-American countries. Meta-analysis of estimates from discrete- time logistic models.

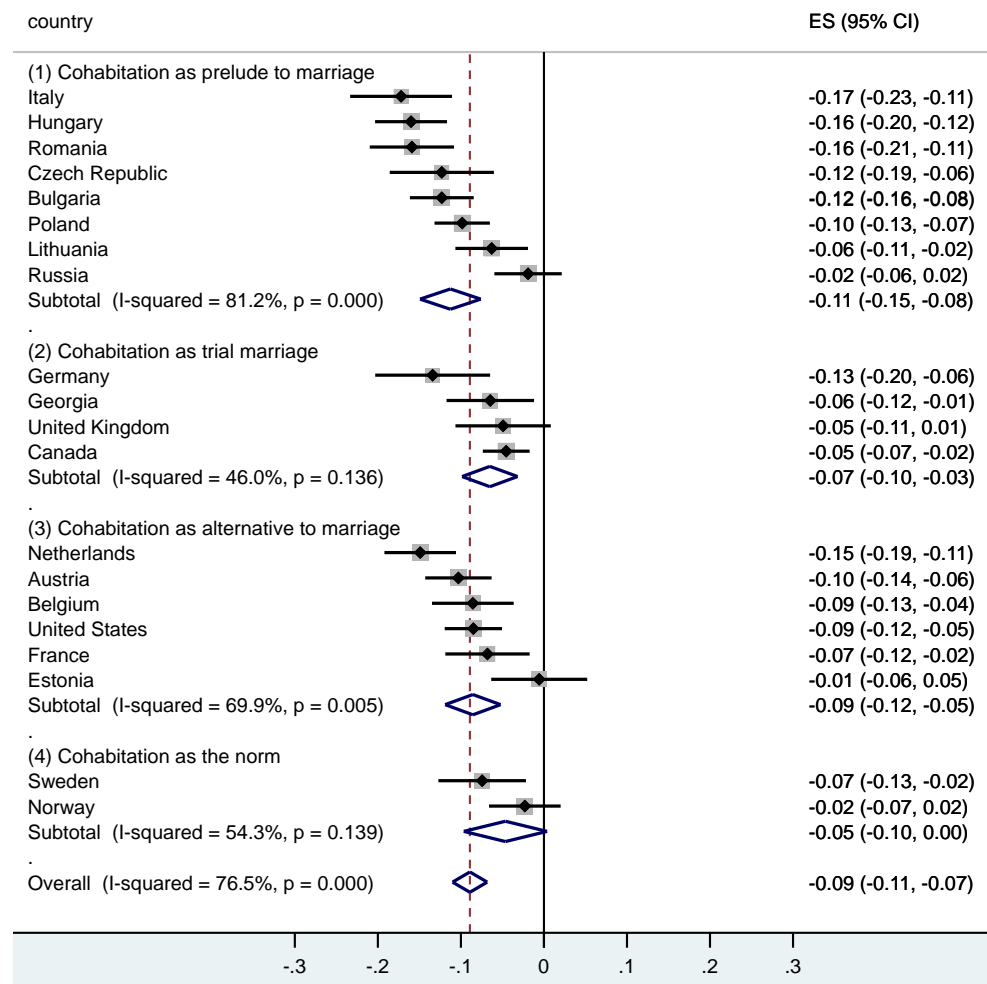


Figure A3.1b. Net effect of parental education on marriage for **men** (controlled for own education and enrollment) for 18 European and two North-American countries. Meta-analysis of estimates from discrete- time logistic models.

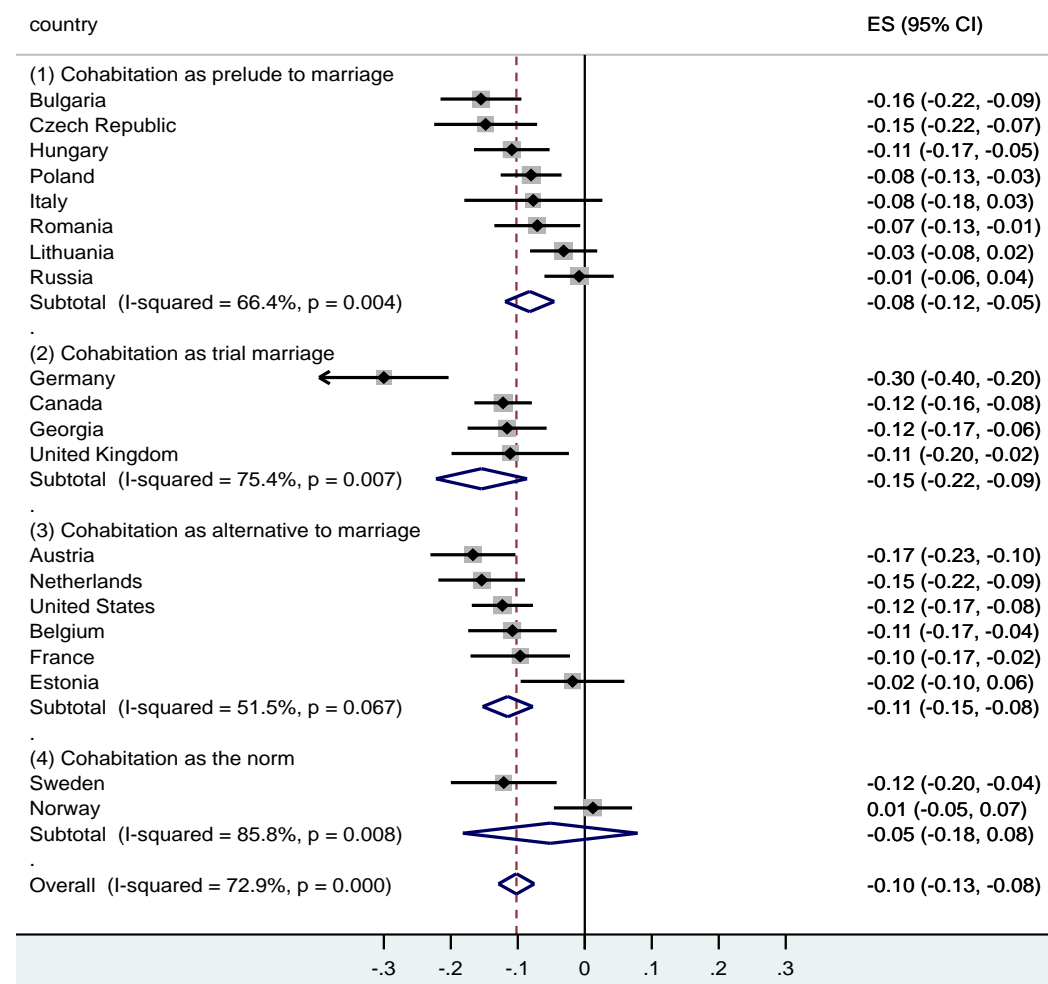


Figure A3.2a. Effect of parental education on marriage when young adults are **not** living together for **women** for 18 European and two North-American countries. Meta-analysis of estimates from discrete- time logistic models.

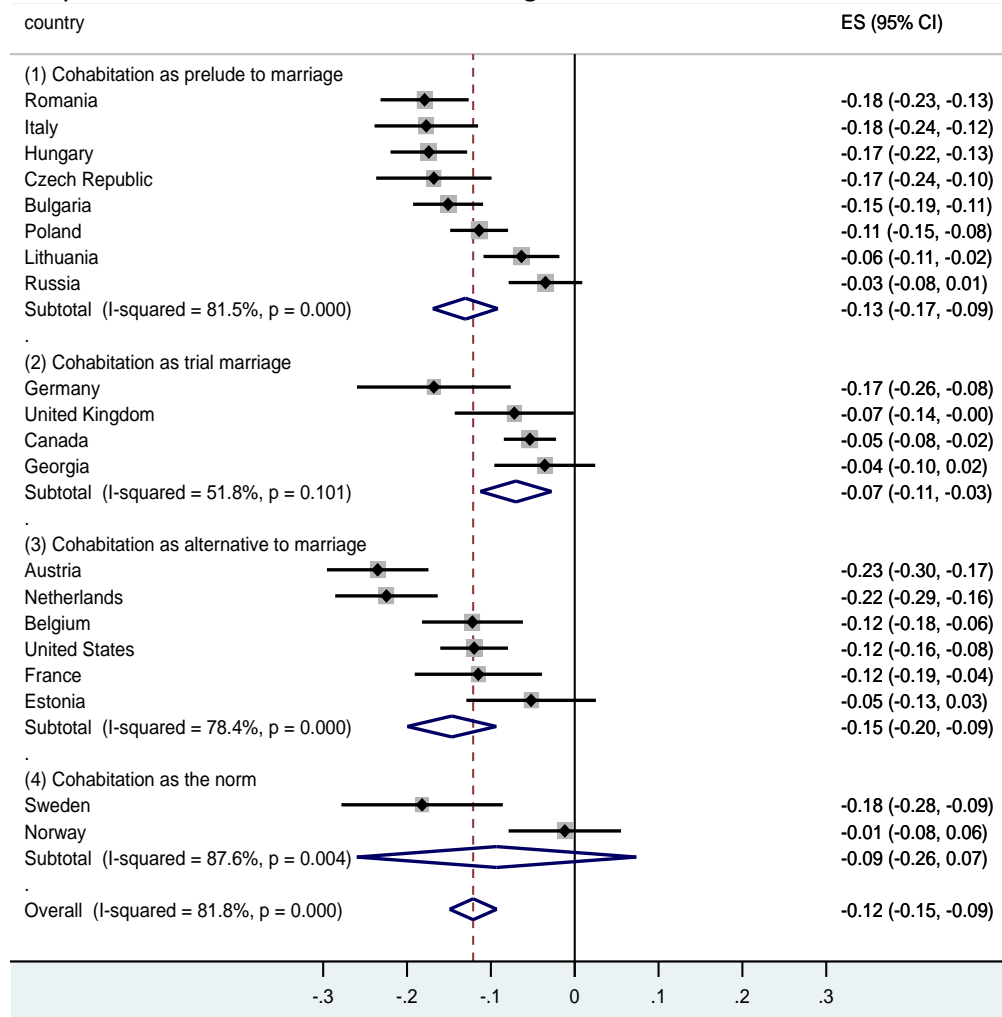


Figure A3.2b. Effect of parental education on marriage when young adults are living together for **women** for 18 European and two North-American countries. Meta-analysis of estimates from discrete- time logistic models.

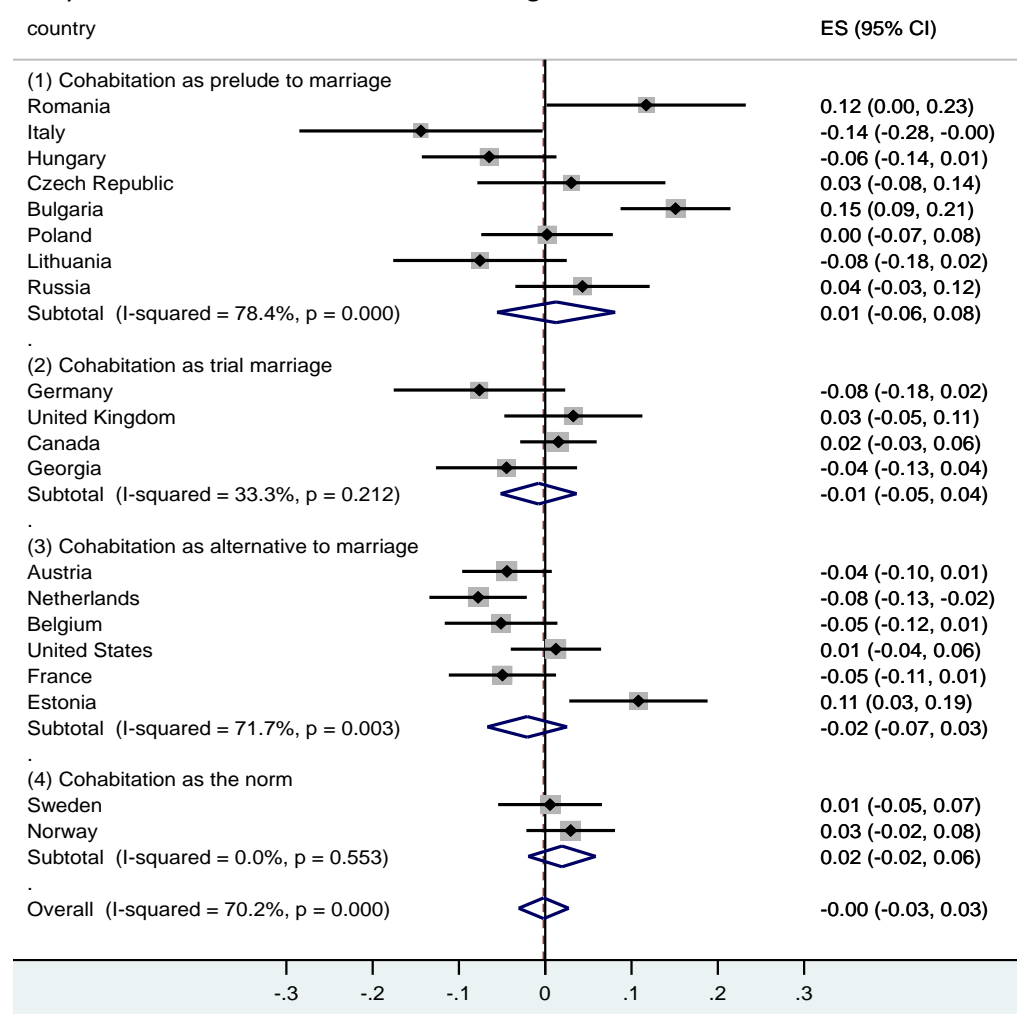


Figure A3.3a. Effect of parental education on marriage when young adults are **not** living together for **men** for 18 European and two North-American countries. Meta-analysis of estimates from discrete- time logistic models.

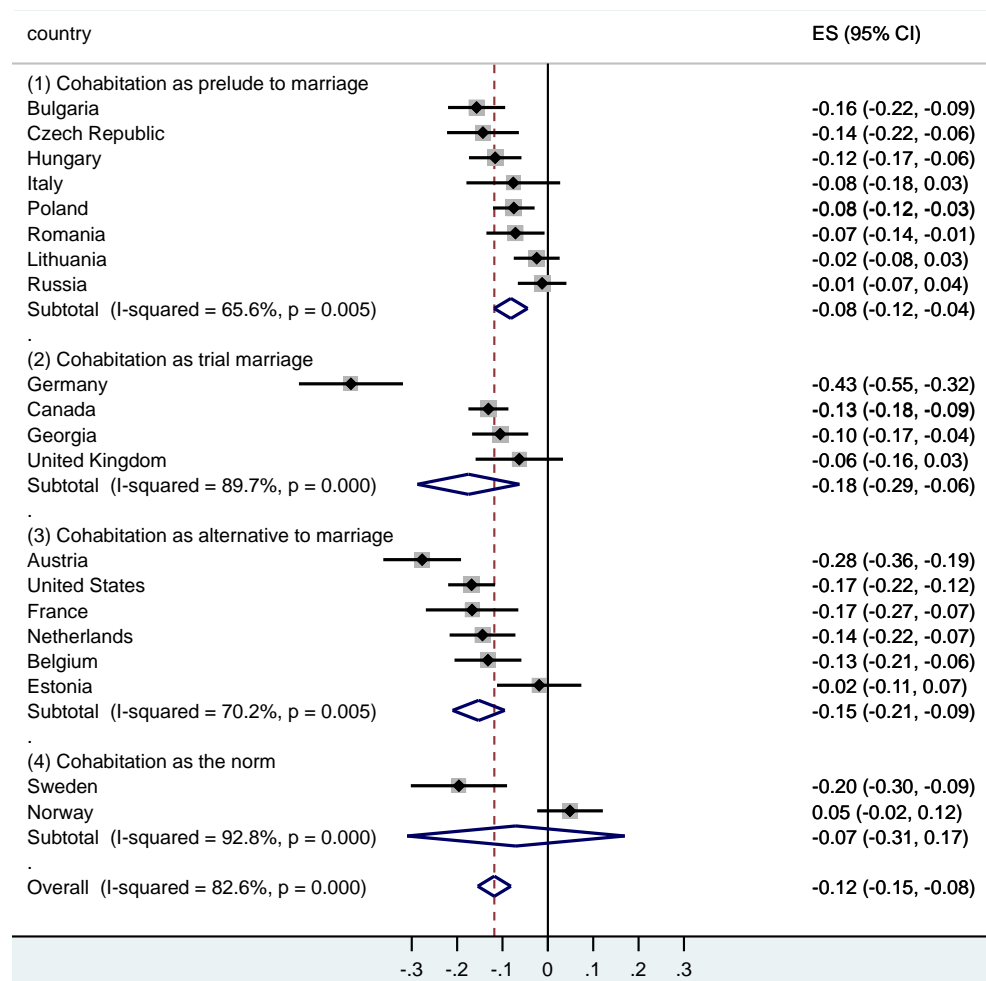


Figure A3.3b. Effect of parental education on marriage when young adults are living together for **men** for 18 European and two North-American countries. Meta-analysis of estimates from discrete- time logistic models.

